

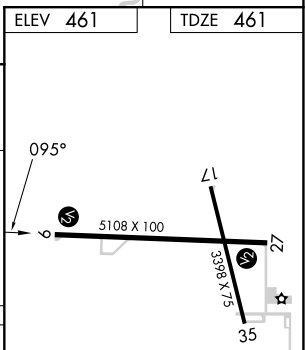
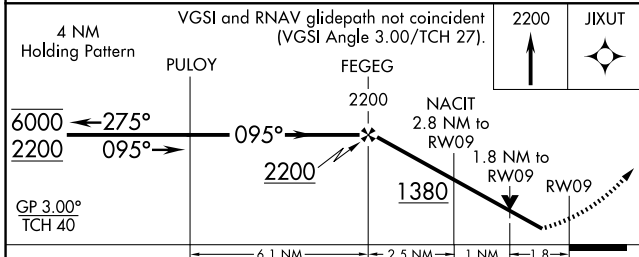
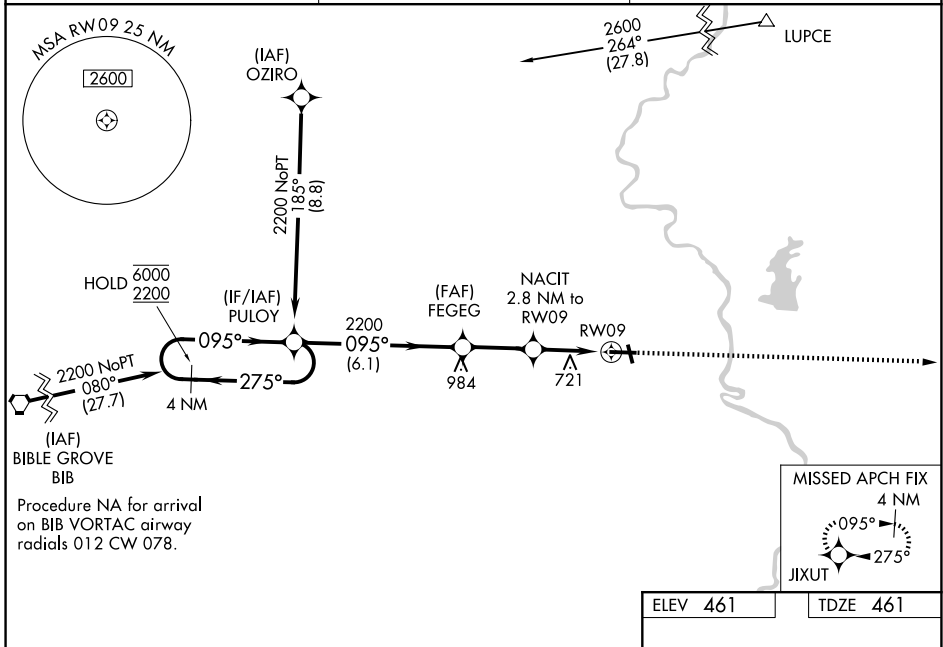
WAAS CH <b>49109</b> <b>W09A</b>	APP CRS <b>095°</b>	Rwy Ldg TDZE Apt Elev	<b>5108</b> <b>461</b> <b>461</b>
--	------------------------	-----------------------------	---

# RNAV (GPS) RWY 9

CRAWFORD COUNTY (RSV)

RNP APCH - GPS.		MISSED APPROACH: Climb to 2200 direct JIXUT and hold.
<p><b>⚠</b> Rwy 9 helicopter visibility reduction below ¾ SM NA. <b>⚠</b> For uncompensated Baro-VNAV systems, LNAV/VNAV NA below -15° C or above 54° C.</p>		

AWOS-3 <b>120.50</b>	HULMAN APP CON <b>135,35 339,8</b>	UNICOM <b>123.0 (CTAF) 0</b>
-------------------------	---------------------------------------	---------------------------------



CATEGORY	A	B	C	D
LPV DA		805-1 1/8	344 (400-1 1/8)	
LNAV/VNAV DA		1103-2 1/2	642 (700-2 1/2)	
LNAV MDA	1040-1	579 (600-1)	1040-1 5/8	579 (600-1 5/8)
CIRCLING	1040-1 579 (600-1)	1080-1 619 (700-1)	1120-1 3/4 659 (700-1 3/4)	1180-2 1/4 719 (800-2 1/4)

REIL Rwy 17, 9 and 27 0  
MRL Rwy 9-27 and 17-35 0

EC-3, 11 JUN 2026 to 09 JUL 2026

EC-3, 11 JUN 2026 to 09 JUL 2026