

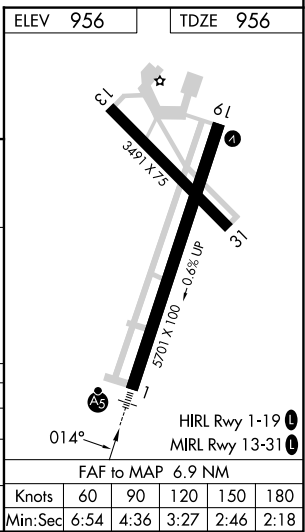
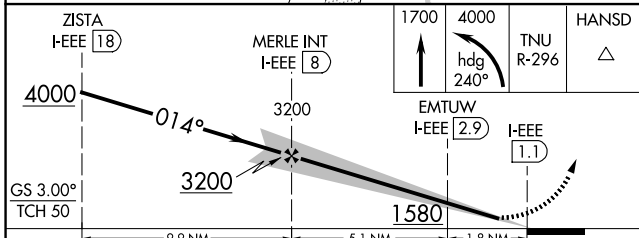
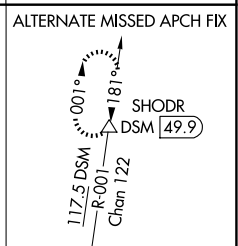
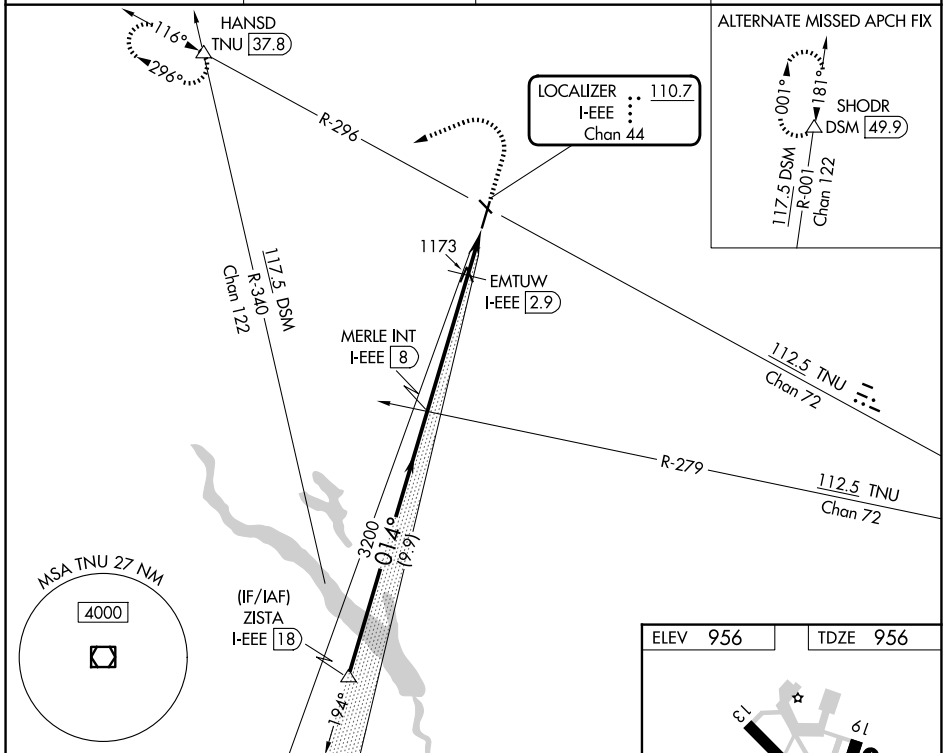
LOC/DME I-EEE 110.7 Chan 44	APP CRS 014°	Rwy Ldg TDZE Apt Elev 5701 956 956
--	------------------------	--

ILS or LOC RWY 1

AMES MUNI (AMW)

DME required.	MALSR	MISSED APPROACH: Climb to 1700 then climbing left turn to 4000 on heading 240° and TNU VOR/DME R-296 to HANSD INT/37.8 DME and hold, continue climb-in-hold to 4000.
<p>NA For inop ALS increase S-LOC 1 Cat C/D visibility to 1 3/8 SM.</p> <p>-26°C</p>		

ASOS 132.025	DES MOINES APP CON 123.9 307.15	CLNC DEL 126.0	UNICOM 122.7 (CTAF)
------------------------	---	--------------------------	-------------------------------



NC-3, 11 JUN 2026 to 09 JUL 2026

NC-3, 11 JUN 2026 to 09 JUL 2026