

WAAS CH <b>62918</b> <b>W01A</b>	APP CRS <b>015°</b>	Rwy Ldg TDZE Apt Elev	<b>5705</b> <b>1985</b> <b>1985</b>
--	------------------------	-----------------------------	---

# RNAV (GPS) RWY 1

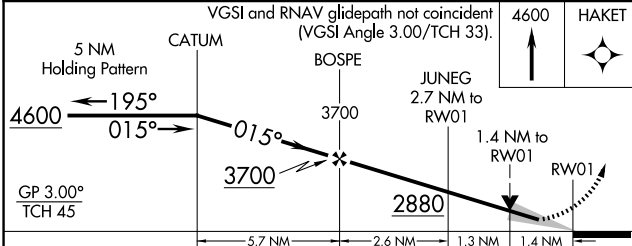
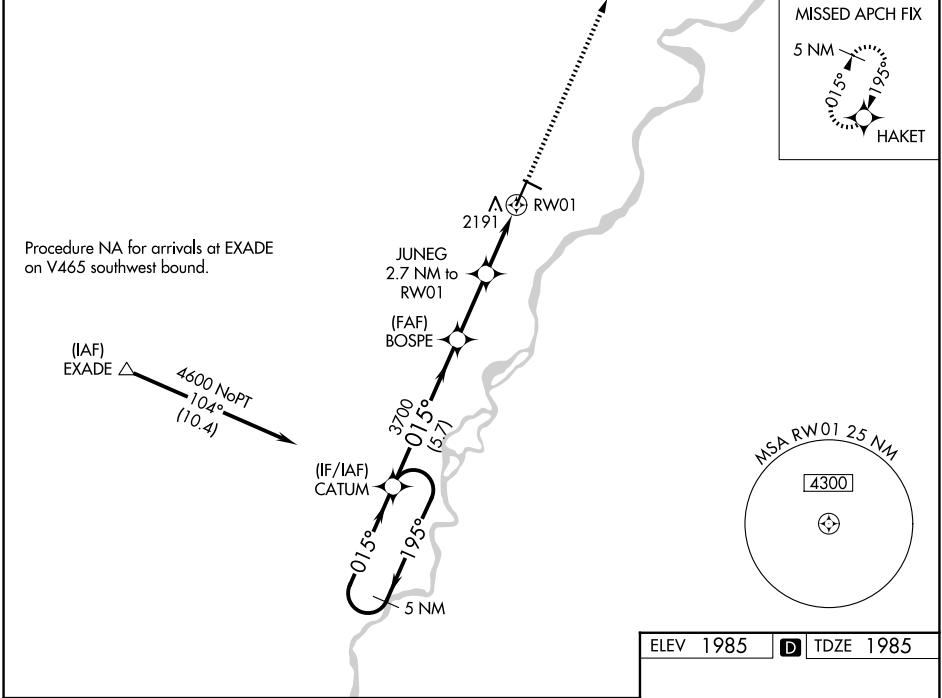
SIDNEY-RICHLAND RGNL (SDY)

RNP APCH - GPS.

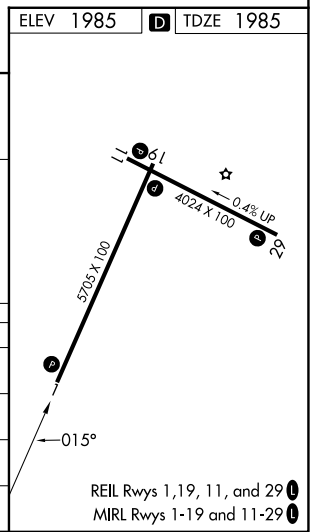
**⚠** For uncompensated Baro-VNAV systems, LNAV/VNAV NA below -20°C or above 54°C. Circling Rwy 11, 29 NA at night.

MISSED APPROACH: Climb to 4600 direct HAKET and hold.

AWOS-3PT <b>119.275</b>	SALT LAKE CENTER <b>126.85 305.2</b>	UNICOM <b>122.8 (CTAF) 0</b>
----------------------------	---	---------------------------------



CATEGORY	A	B	C	D
LPV DA		2238-7/8	253 (300-7/8)	
LNAV/VNAV DA		2419-11/2	434 (500-11/2)	
LNAV MDA	2460-1	475 (500-1)	2460-1 3/8	475 (500-1 3/8)
CIRCLING	2580-1 595 (600-1)	2660-1 675 (700-1)	2700-2 715 (800-2)	2840-2 3/4 855 (900-2 3/4)



NW-1, 11 JUN 2026 to 09 JUL 2026

NW-1, 11 JUN 2026 to 09 JUL 2026