

LOC/DME I-PYM <b>109.35</b> Chan 30 (Y)	APP CRS <b>056°</b>	Rwy Ldg TDZE Apt Elev	<b>4650</b> <b>145</b> <b>148</b>
---	------------------------	-----------------------------	---

# ILS or LOC RWY 6

PLYMOUTH MUNI (PYM)

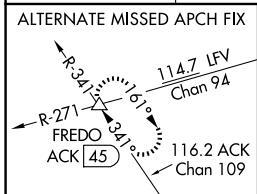
RNP APCH - GPS. From PVD VOR/DME.  
DME required for LOC only.  
Aircraft not GPS equipped - RADAR required for procedure entry.

**⚠** Circling Rwy 15 NA at night.  
**⚠** Rwy 6 helicopter visibility reduction below 3/4 SM NA.  
For inop ALS, increase S-ILS 6 visibility all Cats to 3/8 SM.

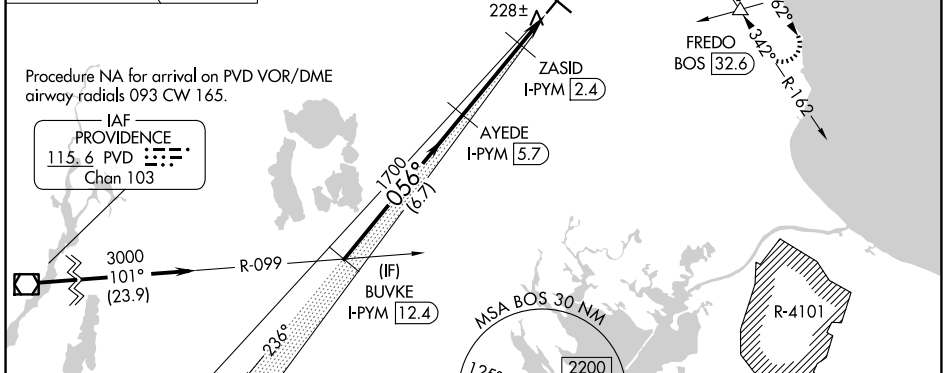


MISSED APPROACH: Climb to 640 then climbing right turn to 2000 on heading 100° and on BOS VOR/DME R-162 to FREDO INT/BOS 32.6 DME and hold.

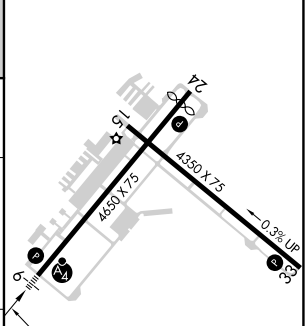
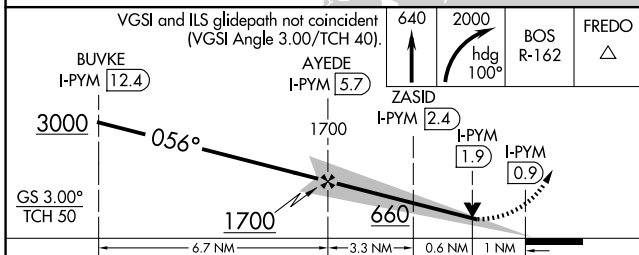
ASOS <b>135.625</b>	BOSTON APP CON <b>118.2 284.6</b>	CLNC DEL <b>127.75</b>	UNICOM <b>122.725</b> (CTAF)	<b>122.9</b> <b>⓪</b>
------------------------	--------------------------------------	---------------------------	---------------------------------	-----------------------



**LOCALIZER 109.35**  
I-PYM  
Chan 30 (Y)



ELEV 148	<b>D</b>	TDZE 145
----------	----------	----------



CATEGORY	A	B	C	D
S-ILS 6	436-3/4	291 (300-3/4)		NA
S-LOC 6	480-3/4	335 (400-3/4)		NA
CIRCLING	620-1 472 (500-1)	640-1 492 (500-1)	760-1 3/4 612 (700-1 3/4)	NA

REIL Rwy 24 **⓪**  
MIRL Rwy 6-24 and 15-33 **⓪**

NE-1, 11 JUN 2026 to 09 JUL 2026

NE-1, 11 JUN 2026 to 09 JUL 2026