

LOC I-OUP <b>111.5</b>	APP CRS <b>274°</b>	Rwy Ldg TDZE Apt Elev	<b>6500</b> <b>778</b> <b>778</b>
---------------------------	------------------------	-----------------------------	---


# ILS or LOC RWY 27

ELKHART MUNI (EKM)

RNP APCH - GPS.

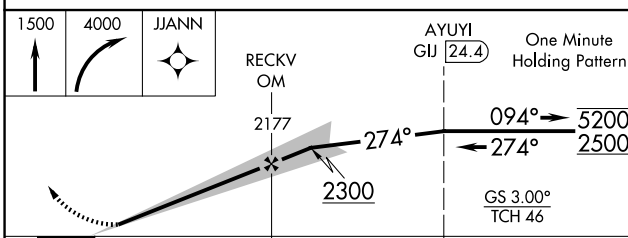
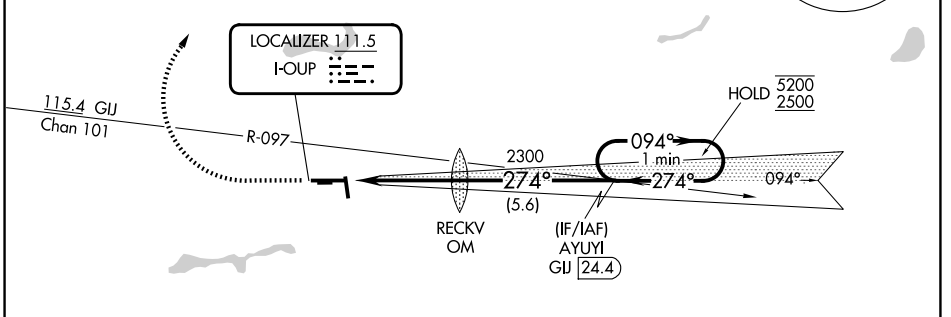
RADAR required for procedure entry.

**⚠** Circling NA to Rwys 8 and 26. Rwy 27 helicopter visibility reduction below RVR 4000 NA. Circling Rwy 18 and 36 NA at night. When local altimeter setting not received, use SBN altimeter setting and increase S-ILS 27 DA to 1100 feet, increase all MDAs 40 feet, and S-LOC 27 visibility Cat C/D to RVR 5500, and Circling visibility Cat D ¼ SM. For inop ALS, increase S-ILS 27 all Cats visibility to RVR 4500 and S-LOC 27 Cat A/B visibility to 5500 and Cat C/D visibility to 1 ½ SM. For inop ALS when using SBN, increase S-LOC 27 Cat A/B visibility to RVR 5500, and Cat C/D visibility to 1 ½ SM.

MALSR 

MISSED APPROACH: Climb to 1500 then climbing right turn to 4000 direct JJANN and hold.

AWOS-3PT <b>124.475</b>	SOUTH BEND APP CON ★ <b>118.55 257.8</b>	ELKHART TOWER ★ <b>119.5 (CTAF) 0</b>	GND CON <b>121.8</b>	UNICOM <b>122.95</b>
----------------------------	---	--	-------------------------	-------------------------



ELEV 778 **D** TDZE 778

MIRL Rwy 18-36 **0**  
HIRL Rwy 9-27 **0**  
REIL Rwys 9, 18 and 36 **0**

FAF to MAP 4.2 NM

Knots	60	90	120	150	180
Min:Sec	4:12	2:48	2:06	1:41	1:24

CATEGORY	A	B	C	D
S-ILS 27		1066/40	288 (300-¾)	
S-LOC 27	1240/40	462 (500-¾)	1240/50	462 (500-1)
CIRCLING	1240-1 462 (500-1)	1300-1 522 (600-1)	1380-1¾ 602 (700-1¾)	1580-2½ 802 (900-2½)

EC-2, 11 JUN 2026 to 09 JUL 2026

EC-2, 11 JUN 2026 to 09 JUL 2026