

APP CRS	Rwy Ldg	<b>5000</b>
<b>096°</b>	TDZE	<b>755</b>
	Apt Elev	<b>755</b>

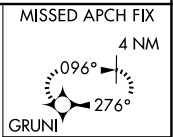
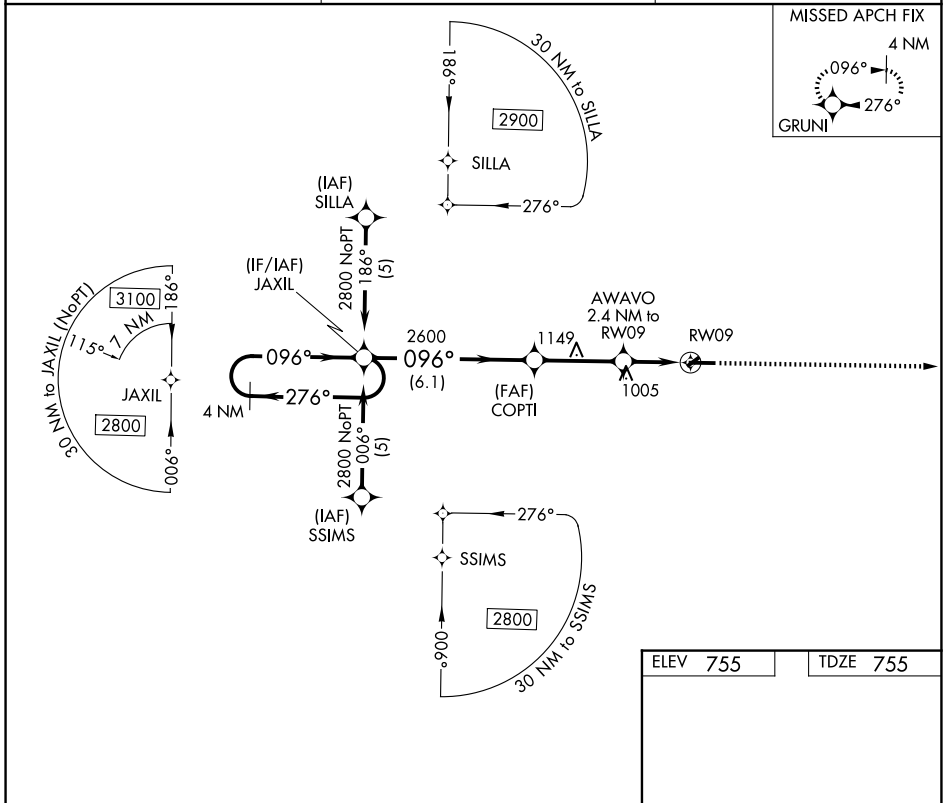
# RNAV (GPS) RWY 9

MOUNT PLEASANT MUNI (MOP)

**⚠** DME/DME RNP-0.3 NA. When local altimeter setting not received use Alma altimeter setting and increase all MDA 60 feet, increase LNAV Cat C/D and Circling Cat C visibility ¼ mile. Circling NA to Rwy 5 and 23. Rwy 9 helicopter visibility reduction below ¾ SM NA.

MISSED APPROACH: Climb to 2800 direct GRUNI and hold.

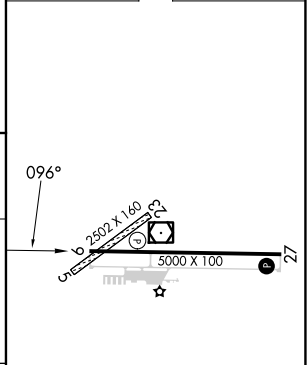
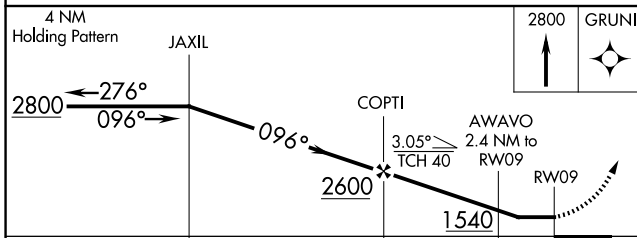
AWOS-3P <b>133.025</b>	GREAT LAKES APP CON* <b>126.45 235.625</b>	UNICOM <b>123.0 (CTAF)</b>
---------------------------	---	-------------------------------



EC-1, 11 JUN 2026 to 09 JUL 2026

EC-1, 11 JUN 2026 to 09 JUL 2026

ELEV 755	TDZE 755
----------	----------



CATEGORY	A	B	C	D
LNAV MDA	1320-1	565 (600-1)	1320-1½ 565 (600-1½)	1320-1¾ 565 (600-1¾)
CIRCLING	1320-1	565 (600-1)	1400-1¾ 645 (700-1¾)	1700-3 945 (1000-3)

REIL Rwy 9 and 27  
MIRL Rwy 9-27