

WARSAW, INDIANA

AL-5282 (FAA)

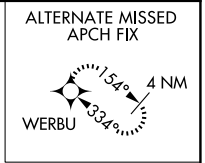
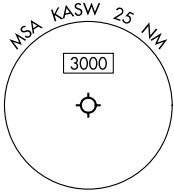
25331

LOC/DME I-ASW <b>111.55</b> Chan <b>52(Y)</b>	APP CRS <b>272°</b>	Rwy Ldg <b>5100</b> TDZE <b>847</b> Apt Elev <b>850</b>
---	------------------------	---

# ILS or LOC RWY 27

WARSAW MUNI (ASW)

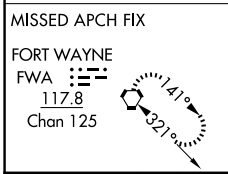
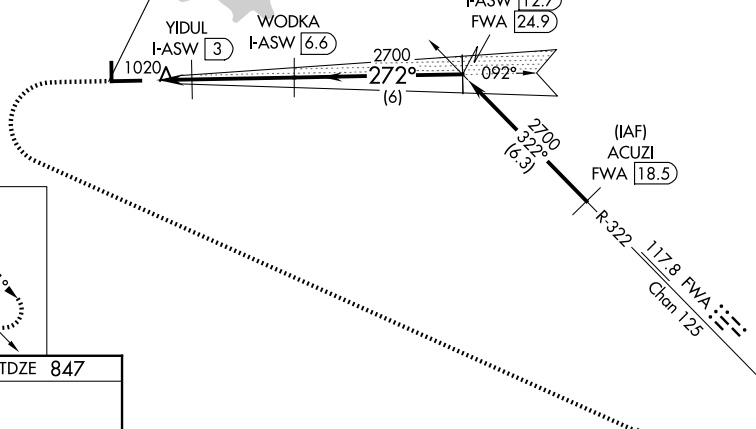
DME required.		MISSED APPROACH: Climb to 1300 then climbing left turn to 4000 direct FWA VORTAC and hold.	
NA Circling Rwy 18, 36 NA at night.		CINC DEL <b>134.05</b>	UNICOM <b>122.7 (CTAF) 0</b>
AWOS-3 <b>121.125</b>	FORT WAYNE APP CON <b>127.2 284.6</b>		



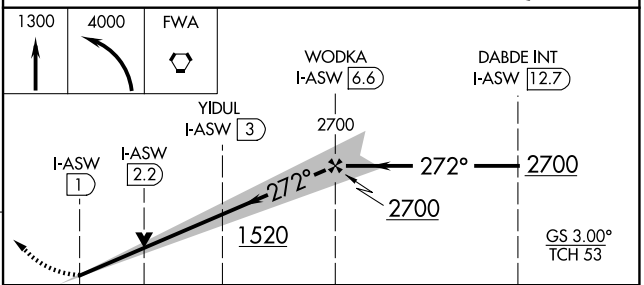
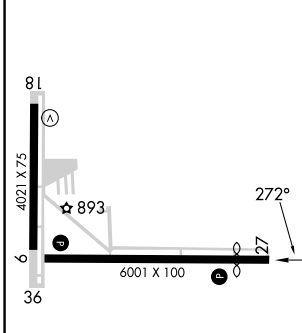
LOCALIZER 111.55  
I-ASW  
Chan 52 (Y)

(IF)  
DABDE INT I-ASW 12.7  
FWA 24.9

(IAF)  
ACUZI FWA 18.5



ELEV 850	<b>D</b>	TDZE 847
----------	----------	----------



CATEGORY	A	B	C	D
S-ILS 27	1047-3/4		200 (200-3/4)	
S-LOC 27	1280-1	433 (500-1)	1280-1 1/4	433 (500-1 1/4)
CIRCLING	1340-1	490 (500-1)	1480-1 3/4 630 (700-1 3/4)	1480-2 630 (700-2)

HIRL Rwy 9-27  
MIRL Rwy 18-36  
REIL Rwy 9 and 27

WARSAW, INDIANA  
Amdt 2 07OCT21

41°16'N-85°50'W

# WARSAW MUNI (ASW) ILS or LOC RWY 27

EC-2, 11 JUN 2026 to 09 JUL 2026

EC-2, 11 JUN 2026 to 09 JUL 2026