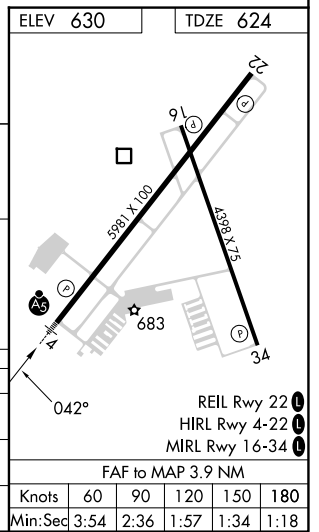
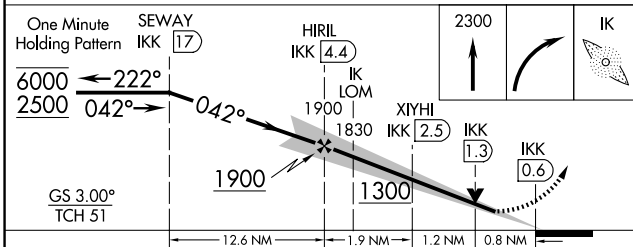
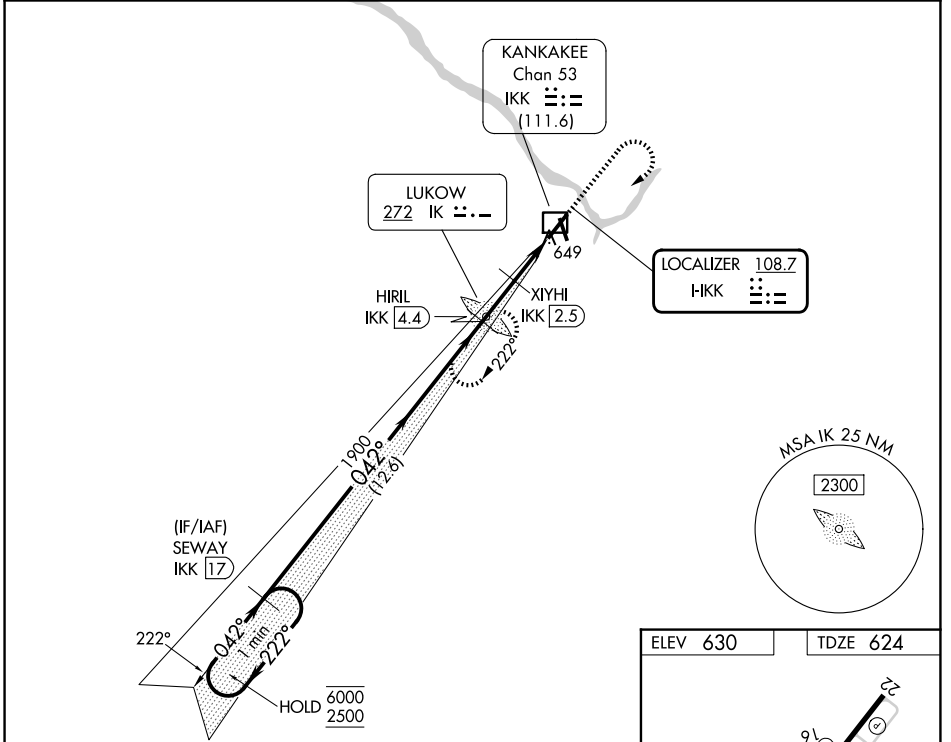


LOC I-IKK <b>108.7</b>	APP CRS <b>042°</b>	Rwy Ldg TDZE Apt Elev	<b>5981</b> <b>624</b> <b>630</b>
---------------------------	------------------------	-----------------------------	---

# ILS or LOC RWY 4

GREATER KANKAKEE (IKK)

RADAR required for procedure entry. DME required. ADF required.		MALSR	MISSED APPROACH: Climb to 2300 then right turn direct LUKOW LOM and hold.
<p>⚠️ NA Circling to Rwy 16, 34 NA at night. DME from IKK DME. DME use requires simultaneous reception of H-KK and IKK DME. For inop ALS, increase S-LOC 4 Cat C/D visibility to ½ SM. Autopilot coupled approach NA below 988 feet.</p>			
AWOS-3 <b>128.475</b>	CHICAGO CENTER <b>132.5 284.7</b>	UNICOM <b>123.0 (CTAF) 0</b>	



CATEGORY	A	B	C	D
S-ILS 4		824-½	200 (200-½)	
S-LOC 4		920-½	296 (300-½)	
CIRCLING	1080-1 450 (500-1)	1100-1 470 (500-1)	1140-1½ 510 (600-1½)	1340-2¼ 710 (800-2¼)

EC-3, 11 JUN 2026 to 09 JUL 2026

EC-3, 11 JUN 2026 to 09 JUL 2026