

WAAS CH <b>97639</b> <b>W17A</b>	APP CRS <b>170°</b>	Rwy Ldg TDZE <b>456</b> Apt Elev <b>464</b>	<b>4372</b> <b>456</b> <b>464</b>
--	------------------------	---	---

# RNAV (GPS) RWY 17

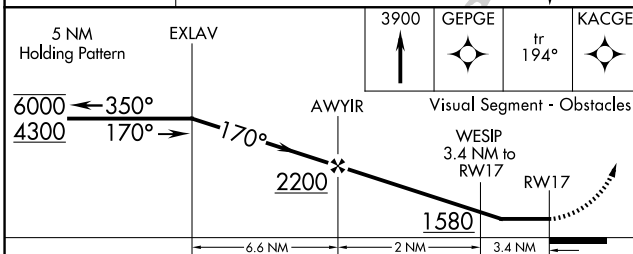
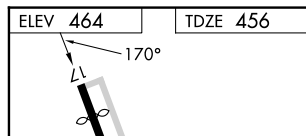
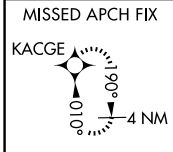
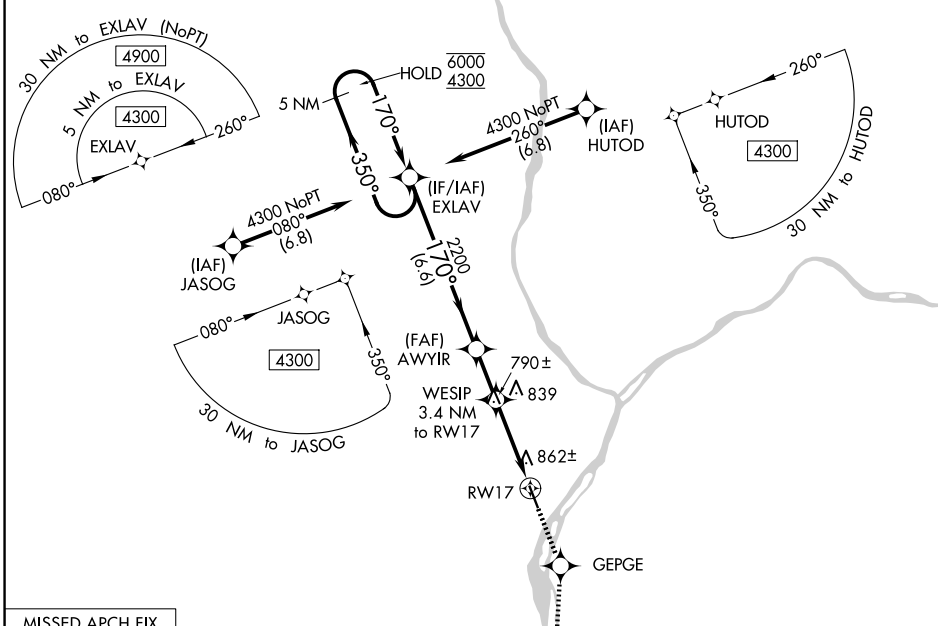
PENN VALLEY (SE/G)

RNP APCH - GPS.

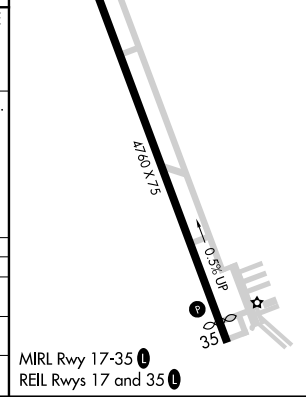
**⚠** Rwy 17 helicopter visibility reduction below 1 SM NA. Straight-in Rwy 17 NA at night, Circling Rwy 17 NA at night.  
**⚠** -13°C

**MISSED APPROACH:** Climb to 3900 direct GEPGE and on track 194° to KACGE and hold, continue climb-in-hold to 3900.

ASOS <b>123.975</b>	HARRISBURG APP CON <b>118.25 269.45</b>	UNICOM <b>122.7 (CTAF) ①</b>
------------------------	--	---------------------------------



CATEGORY	A	B	C	D
LP MDA	1200-1 744 (800-1)	1200-1¼ 744 (800-1¼)	1200-2	744 (800-2)
LNAV MDA	1260-1 804 (800-1)	1260-1¼ 804 (800-1¼)	1260-2½	804 (800-2½)
CIRCLING	1400-1¼	936 (1000-1¼)	1420-3 956 (1000-3)	1600-3 1136 (1200-3)



NE-4, 11 JUN 2026 to 09 JUL 2026

NE-4, 11 JUN 2026 to 09 JUL 2026