

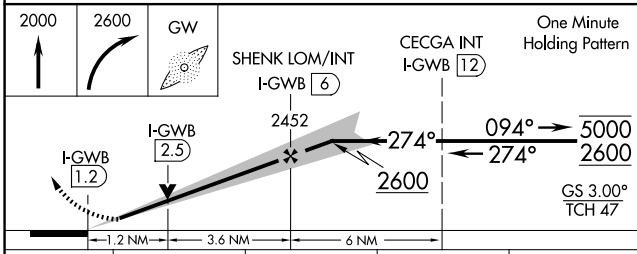
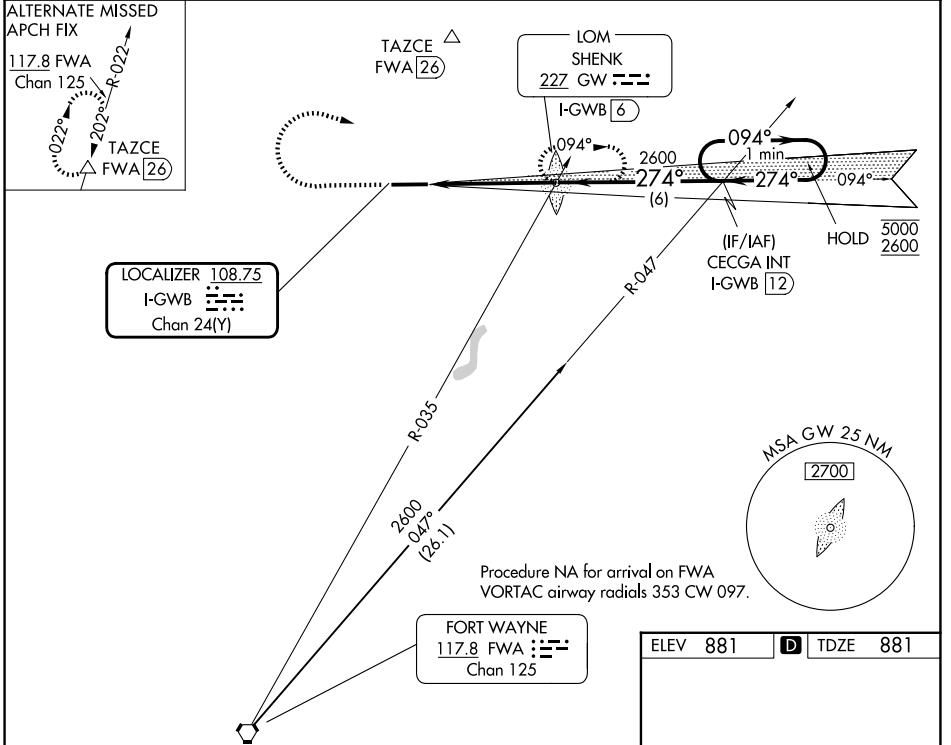
LOC/DME I-GWB <b>108.75</b> Chan 24(Y)	APP CRS <b>274°</b>	Rwy Ldg <b>6356</b> TDZE <b>881</b> Apt Elev <b>881</b>
--	------------------------	---

# ILS or LOC RWY 27

AUBURN/DEKALB EXEC (GWB)

<p>NA</p>	<p>MALS R</p>	<p>MISSED APPROACH: Climb to 2000 then climbing right turn to 2600 direct SHENK LOM/INT/ I-GWB 6 DME and hold.</p>
-----------	---------------	--

AWOS-3P <b>124.15</b>	FORT WAYNE APP CON <b>127.2 284.6</b>	CLNC DEL <b>126.6</b>	UNICOM <b>123.0 (CTAF) 0</b>
--------------------------	--	--------------------------	---------------------------------



CATEGORY	A	B	C	D
S-ILS 27	1081-1/2		200 (200-1/2)	
S-LOC 27	1320-1/2 439 (500-1/2)		1320-3/4 439 (500-3/4)	
CIRCLING	1320-1 439 (500-1)	1560-1 679 (700-1)	1720-2 1/2 839 (900-2 1/2)	1720-2 3/4 839 (900-2 3/4)

ELEV 881	<b>D</b>	TDZE 881
----------	----------	----------

Runway diagram details: Runway 27 (7106 x 100) with ILS/LOC and MALS. Taxiway 2 (2) is shown. MALS R is located at the end of the runway.

FAF to MAP 4.8 NM					
Knots	60	90	120	150	180
Min:Sec	4:48	3:12	2:24	1:55	1:36

EC-2, 11 JUN 2026 to 09 JUL 2026

EC-2, 11 JUN 2026 to 09 JUL 2026