

WAAS CH 65705 W03A	APP CRS 027°	Rwy Ldg TDZE 5008 996 Apt Elev 996
--	------------------------	--

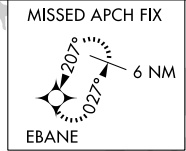
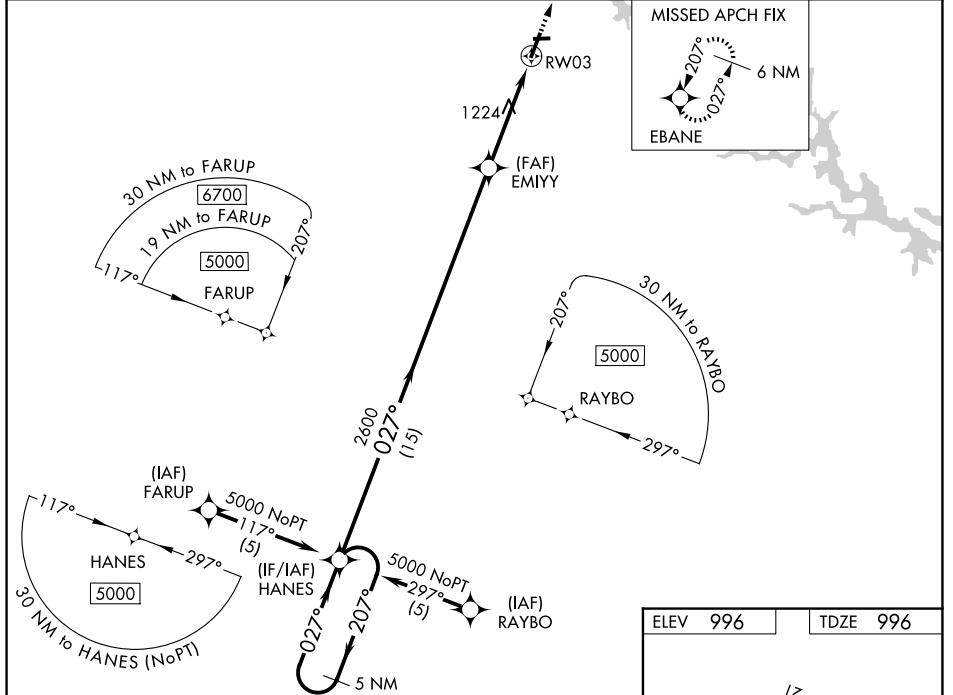
RNAV (GPS) RWY 3

TOCCOA RG LETOURNEAU FLD (TOC)

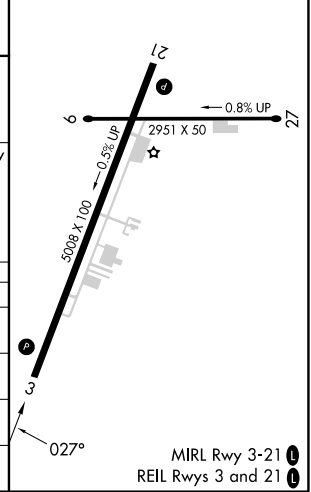
NA Baro-VNAV and VDP NA when using Gainesville altimeter setting. For uncompensated Baro-VNAV systems, LNAV/VNAV NA below -8°C (18°F) or above 54°C (130°F). DME/DME RNP-0.3 NA. When local altimeter setting not received, use Gainesville altimeter setting and increase LPV DA to 1507 feet, LNAV/VNAV DA to 1859 and all MDA 120 feet. Increase LPV all Cats visibility 3/8 mile, increase LNAV Cat B visibility 1/4 mile, Cats C/D 1/2 mile and Circling Cats A/B/C visibility 1/4 mile. Helicopter visibility reduction below 3/4 SM NA.

MISSED APPROACH: Climb to 6600 direct EBANE and hold, continue climb-in-hold to 6600.

AWOS-3 119.625	ATLANTA CENTER 134.8 379.95	UNICOM 122.8 (CTAF)
--------------------------	---------------------------------------	-------------------------------



ELEV 996	TDZE 996
----------	----------



5 NM Holding Pattern	VGSI and RNAV glidepath not coincident (VGSI Angle 3.25/TCH 32).	6600	EBANE
5000 ← 207°	HANES	EMIYY	*LNAV only
GP 3.44° TCH 40	2600	*1.9 NM to RW03	RW03
	15 NM	2.4 NM	1.9 NM

CATEGORY	A	B	C	D
LPV DA	1392-1 1/8	396 (400-1 1/8)		NA
LNAV/VNAV DA	1744-2 1/2	748 (800-2 1/2)		NA
LNAV MDA	1680-1	684 (700-1)	1680-2	684 (700-2)
CIRCLING	1720-1	724 (800-1)	1760-2 1/4 764 (800-2 1/4)	2480-3 1484 (1500-3)

SE-4, 11 JUN 2026 to 09 JUL 2026

SE-4, 11 JUN 2026 to 09 JUL 2026