

LOC/DME I-SFZ	APP CRS	Rwy Ldg	5000
111.9	047°	TDZE	429
Chan 56		Apt Elev	441

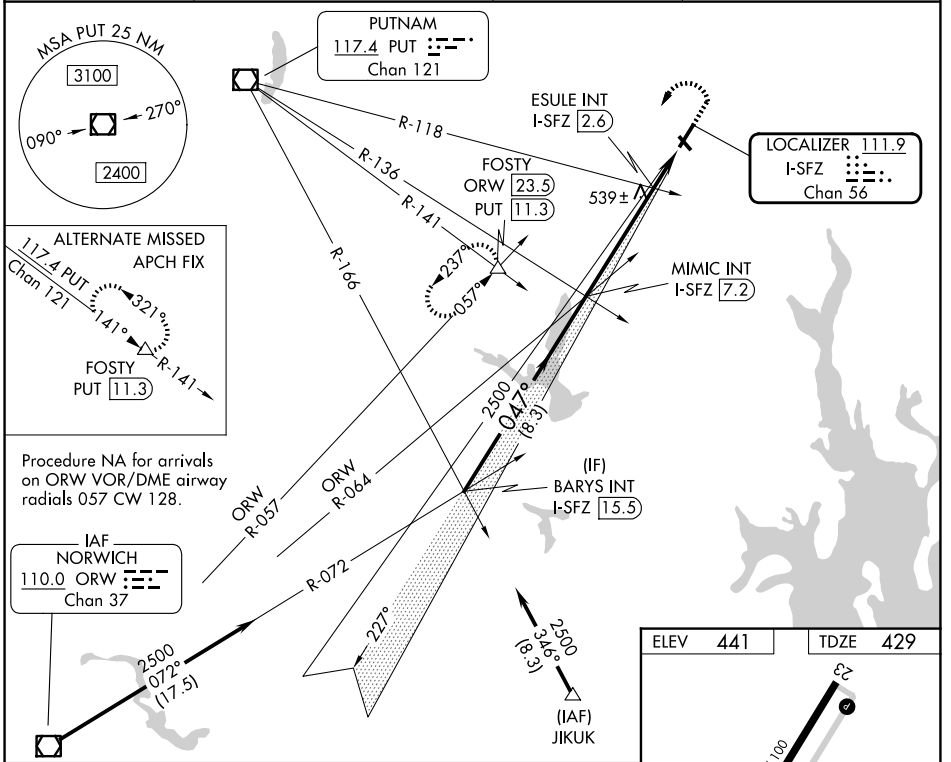
LOC RWY 5

NORTH CENTRAL STATE (SF/Z)

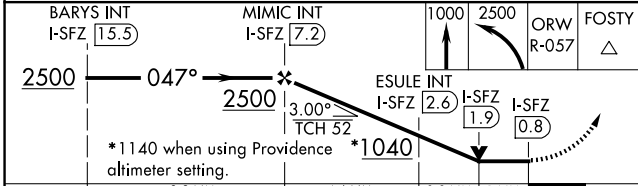
NA Circling Rwy 15, 33 NA at night. VDP NA with Providence altimeter setting. When local altimeter setting not received, use Providence altimeter setting and increase all MDA 100 feet; increase S-5 Cat C and Circling Cat C visibility ¼ mile, and ESULE fix minimums S-5 Cat C visibility ¼ mile.

MALS MISSED APPROACH: Climb to 1000 then climbing left turn to 2500 on ORW VOR/DME R-057 to FOSTY INT/ ORW 23.5 DME and hold.

AWOS-3PT 120.775	PROVIDENCE APP CON ★ 123.675 244.875	CLNC DEL 124.35	UNICOM 123.075 (CTAF) 0
----------------------------	--	---------------------------	-----------------------------------



Procedure NA for arrivals on ORW VOR/DME airway radials 057 CW 128.



CATEGORY	A	B	C	D
S-5	1040-¾	611 (600-¾)	1040-1½	NA
CIRCLING	1040-1	599 (600-1)	1040-1¾	NA
ESULE FIX MINIMUMS (DUAL VOR RECEIVERS OR DME REQUIRED)				
S-5	800-¾	371 (400-¾)	800-⅞	NA
CIRCLING	900-1	459 (500-1)	900-1½	NA

ELEV	441	TDZE	429
------	-----	------	-----

HIRL Rwy 5-23 0
MIRL Rwy 15-33 0
REIL Rws 15, 23 and 33 0

FAF to MAP 6.4 NM					
Knots	60	90	120	150	180
Min:Sec	6:24	4:16	3:12	2:34	2:08

LOC RWY 5

NE-1, 11 JUN 2026 to 09 JUL 2026

NE-1, 11 JUN 2026 to 09 JUL 2026