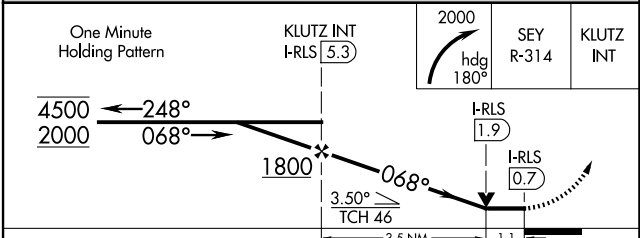
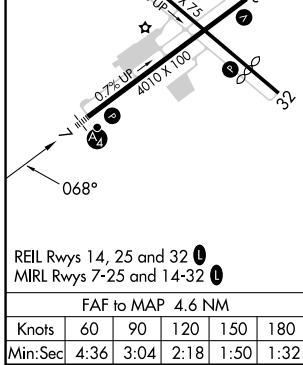
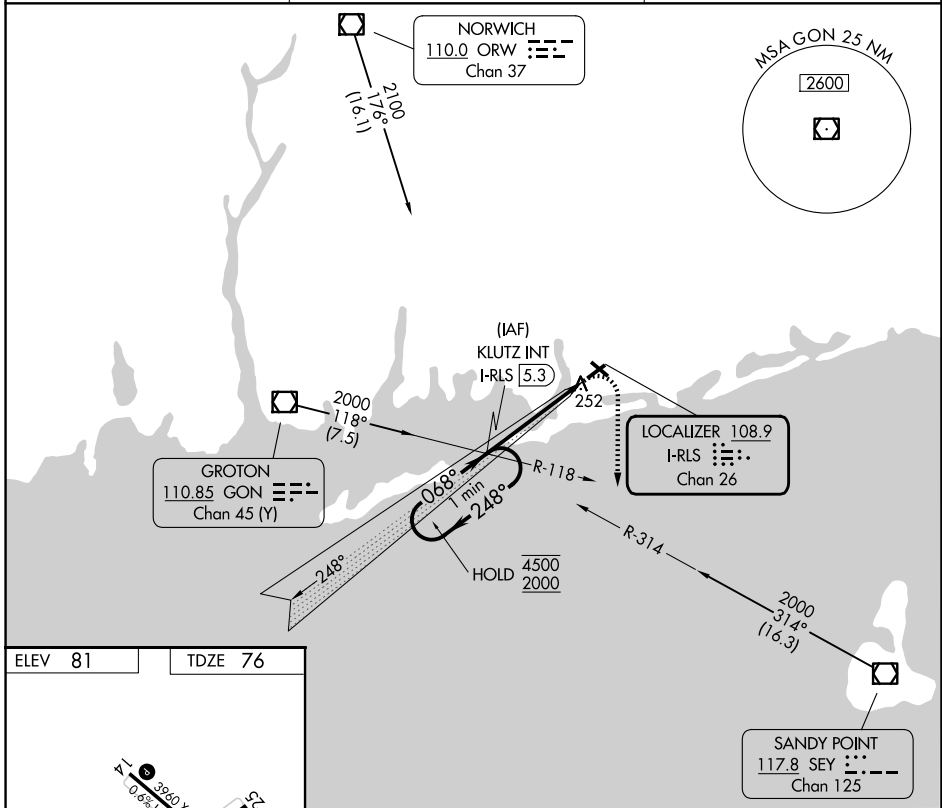


LOC/DME I-RLS 108.9 Chan 26	APP CRS 068°	Rwy Ldg TDZE Apt Elev	4010 76 81
--	------------------------	-----------------------------	---------------------------------------

LOC RWY 7
WESTERLY STATE (WST)

<p>NA Circling to Rwy 14 and 32 NA at night. Rwy 7 helicopter visibility reduction below ¼ SM NA. Inop table does not apply.</p>	<p>MALSF</p>	<p>MISSED APPROACH: Climbing right turn to 2000 on heading 180° and SEY R-314 to KLUTZ INT/I-RLS 5.3 DME and hold, continue climb-in-hold to 2000.</p>
---	---------------------	---

ASOS 132.375	PROVIDENCE APP CON * 119.45 319.2	UNICOM 123.0 (CTAF) 0
------------------------	---	---------------------------------



CATEGORY	A	B	C	D
S-7	520-1	444 (500-1)	520-1¾	444 (500-1¾)
CIRCLING	580-1	499 (500-1)	720-2 639 (700-2)	760-2¼ 679 (700-2¼)

NE-1, 11 JUN 2026 to 09 JUL 2026

NE-1, 11 JUN 2026 to 09 JUL 2026