

WAAS CH 57931 W27A	APP CRS 274°	Rwy Ldg TDZE Apt Elev	4000 1372 1376
--	------------------------	-----------------------------	---

RNAV (GPS) RWY 27

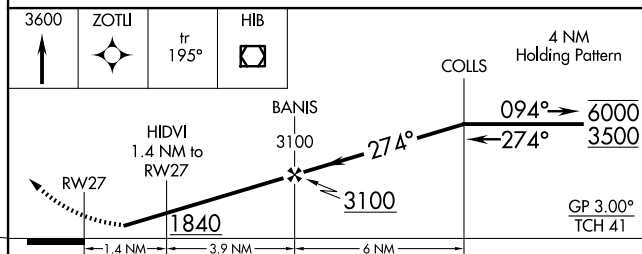
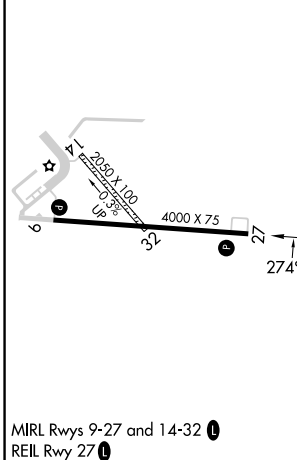
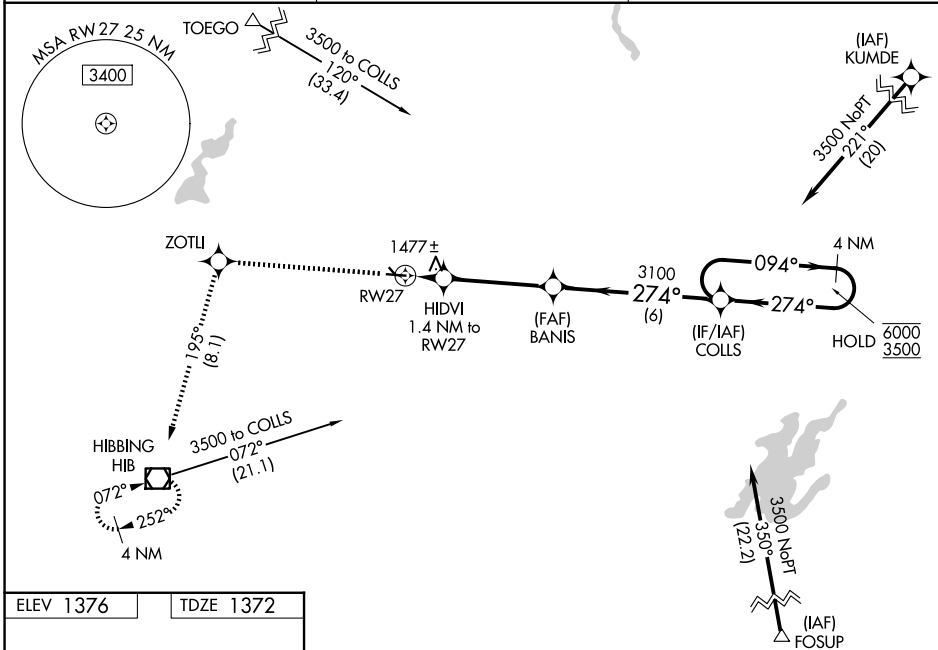
EVELETH/VIRGINIA MUNI (EVM)

RNP APCH - GPS.

Baro-VNAV NA when using HIB altimeter setting. Rwy 27 helicopter visibility reduction below ¼ SM NA. For uncompensated Baro-VNAV systems, LNAV/VNAV NA below -17°C or above 54°C. Circling NA to Rwys 14 and 32. When local altimeter setting not received, use HIB altimeter setting and increase LPV DA to 1670 feet, increase LNAV/VNAV DA to 1687 feet; increase all MDAs 40 feet and LNAV visibility Cat C/D ½ SM.

MISSED APPROACH:
Climb to 3600 direct ZOTLI and on track 195° to HIB VOR/DME and hold.

AWOS-3 118.825	DULUTH APP CON 125.45 233.7	UNICOM 122.7 (CTAF) 1
--------------------------	---------------------------------------	---------------------------------



CATEGORY	A	B	C	D
LPV DA		1634-1	262 (300-1)	
LNAV/VNAV DA		1651-1	279 (300-1)	
LNAV MDA		1740-1	368 (400-1)	
CIRCLING	1880-1 504 (600-1)	1940-1 564 (600-1)	2260-2¾ 884 (900-2¾)	2460-3 1084 (1100-3)

NC-1, 11 JUN 2026 to 09 JUL 2026

NC-1, 11 JUN 2026 to 09 JUL 2026