

LOC/DME I-FLD 108.3 Chan 20	APP CRS 002°	Rwy Ldg TDZE 795 Apt Elev 808
--	------------------------	---

LOC RWY 36

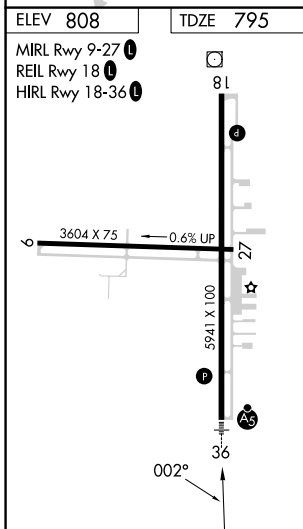
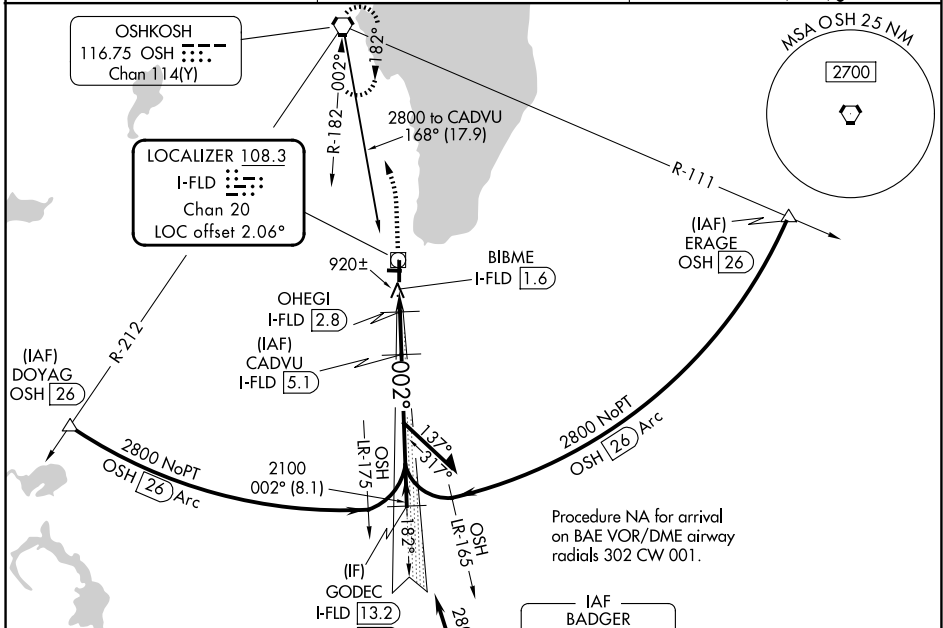
FOND DU LAC COUNTY (F.LD)

DME required. Radar required for Procedure Entry at ERAGE.

⚠️ NA Circling Rwy 9, 27 NA at night. For inop ALS, increase S-LOC 36 Cat A/B visibility to 1 SM, and Cat C/D to 1 1/8 SM. When local altimeter setting not received, use Oshkosh altimeter setting: increase all MDA 40 feet and increase Circling Cat C/D visibility 1/4 SM. VDP NA when using Oshkosh altimeter setting. For inop ALS when using Oshkosh altimeter setting, increase S-LOC 36 Cat A/B visibility to 1 SM.

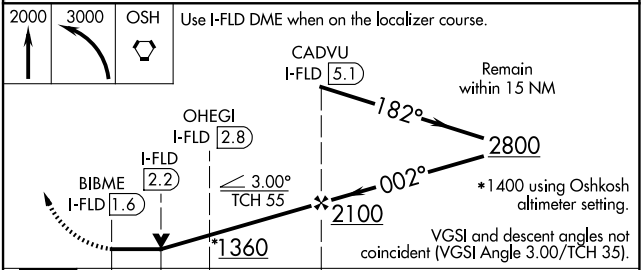
MALSR MISSED APPROACH
Climb to 2000 then climbing left turn to 3000 direct OSH VORTAC and hold.

ASOS 134.0	MILWAUKEE APP CON 127.0 263.075	UNICOM 123.05 (CTAF) 0
----------------------	---	----------------------------------



ELEV 808 TDZE 795

MIRL Rwy 9-27
REIL Rwy 18
HIRL Rwy 18-36



CATEGORY	A	B	C	D
S-LOC 36	1180-3/4 385 (400-3/4)			
CIRCLING	1400-1	592 (600-1)	1520-2 712 (800-2)	1520-2 1/4 712 (800-2 1/4)

EC-3, 11 JUN 2026 to 09 JUL 2026

EC-3, 11 JUN 2026 to 09 JUL 2026