

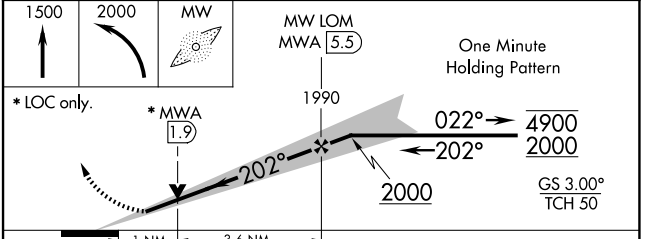
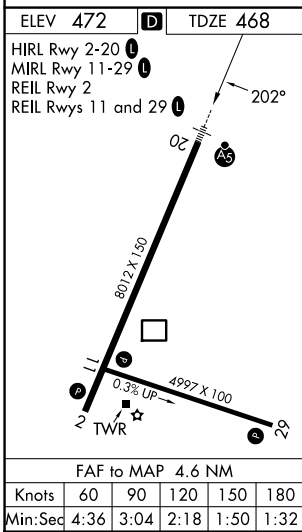
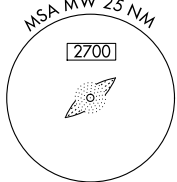
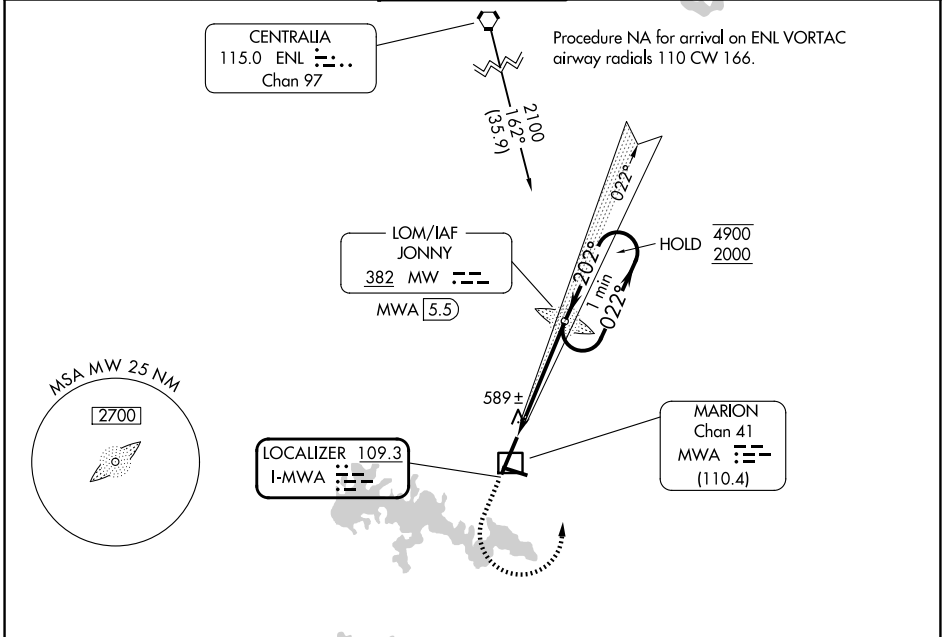
LOC I-MWA 109.3	APP CRS 202°	Rwy Ldg 8012 TDZE 468 Apt Elev 472
---------------------------	------------------------	---------------------------------------------------------------

ILS or LOC RWY 20

VETERANS AIRPORT OF SOUTHERN ILLINOIS (MWA)

DME required. ADF required.	MALSR	MISSED APPROACH: Climb to 1500 then climbing left turn to 2000 direct JONNY LOM/MWA 5.5 DME and hold.
<p>▼ Circling Rwy 11 NA at night. For inop ALS, increase S-LOC 20</p> <p>▲ Cat C/D visibilities to 1 SM.</p>		

AWOS-3P 119.675	KANSAS CITY CENTER 127.475 346.275	MARION TOWER ★ 128.4 (CTAF) 0	GND CON 121.7	UNICOM 122.95
---------------------------	----------------------------------------------	-----------------------------------------	-------------------------	-------------------------



CATEGORY	A	B	C	D
S-ILS 20	668-½		200 (200-½)	
S-LOC 20	840-½	372 (400-½)	840-⅝	372 (400-¾)
CIRCLING	920-1 448 (500-1)	940-1 468 (500-1)	1040-1½ 568 (600-1½)	1340-2¾ 868 (900-2¾)

EC-3, 11 JUN 2026 to 09 JUL 2026

EC-3, 11 JUN 2026 to 09 JUL 2026