


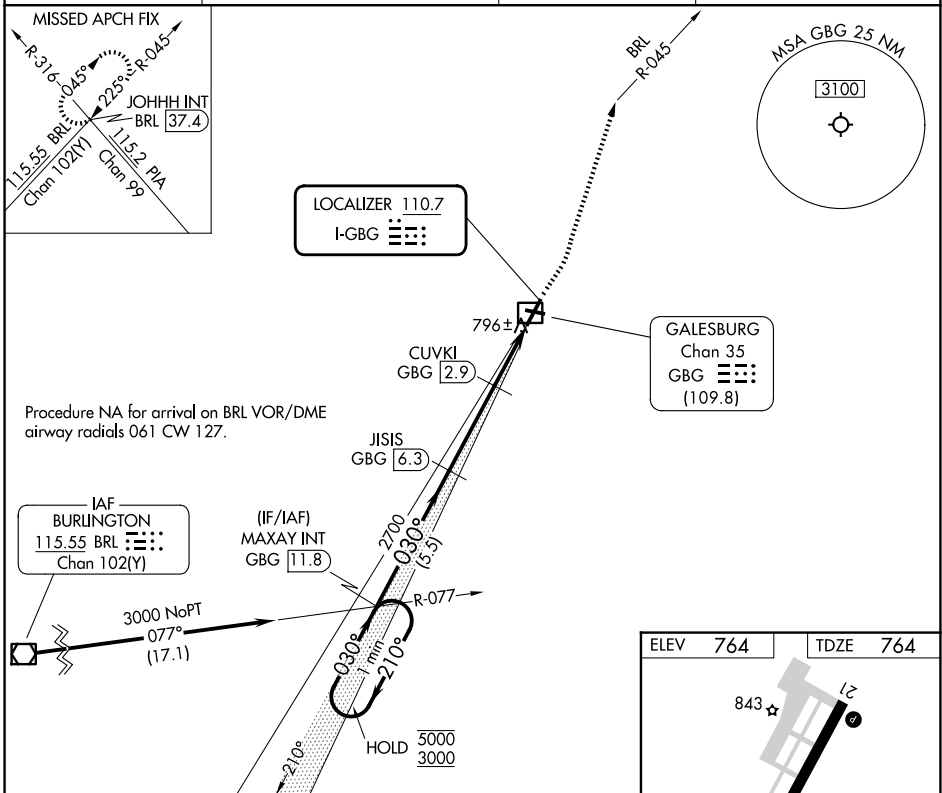
ILS or LOC RWY 3

HARREL W TIMMONS GALESBURG RGNL (GBG)

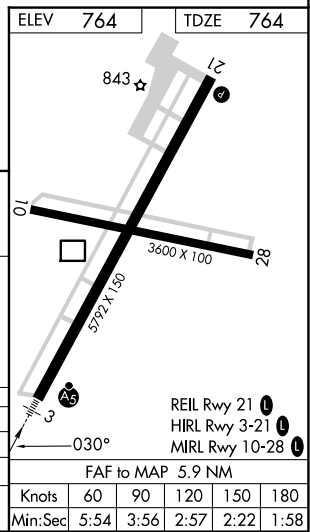
LOC I-GBG 110.7	APP CRS 030°	Rwy Ldg TDZE Apt Elev	5792 764 764
---------------------------	------------------------	-----------------------------	---

DME required.	<p>▼ For inop ALS, increase S-LOC 3 Cat C/D visibility to ½ SM. ▲ NA DME from GBG DME. DME use requires simultaneous reception of I-GBG and GBG DME.</p>	<p>MALSR</p> 	<p>MISSED APPROACH: Climb to 1200 then climbing left turn to 3000 on heading 020° and BRL VOR/DME R-045 to JOHHH INT/ BRL 37.4 DME and hold.</p>
---------------	--	--	--

AWOS-3 118.975	QUAD CITY APP CON ★ 133.275 257.8	CLNC DEL 120.7	UNICOM 123.0 (CTAF)
--------------------------	---	--------------------------	-------------------------------



One Minute Holding Pattern	MAXAY INT GBG 11.8	1200	3000	BRL R-045	JOHHH INT
5000 ← 210°	3000 → 030°	JISIS GBG 6.3	2700	CUVKI GBG 2.9	GBG 1.2
GS 3.00° TCH 55	2700	1600	5.5 NM	3.4 NM	1.7 NM
CATEGORY	A	B	C	D	
S-ILS 3		964-½	200 (200-½)		
S-LOC 3		1060-½	296 (300-½)		
CIRCLING	1220-1	456 (500-1)	1380-1¾	1620-2¾	856 (900-2¾)



ILS or LOC RWY 3

EC-3, 11 JUN 2026 to 09 JUL 2026

EC-3, 11 JUN 2026 to 09 JUL 2026