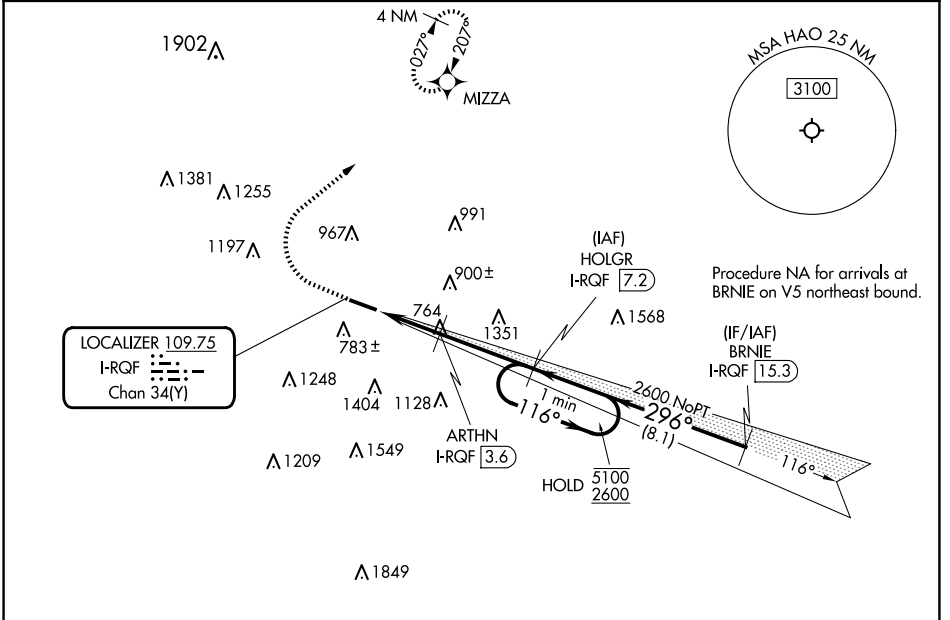


LOC/DME I-RQF 109.75 Chan 34 (Y)	APP CRS 296°	Rwy Idg TDZE Apt Elev	5500 619 632
--	------------------------	-----------------------------	---

ILS or LOC RWY 30

BUTLER COUNTY RGNL/HOGAN FLD (HAO)

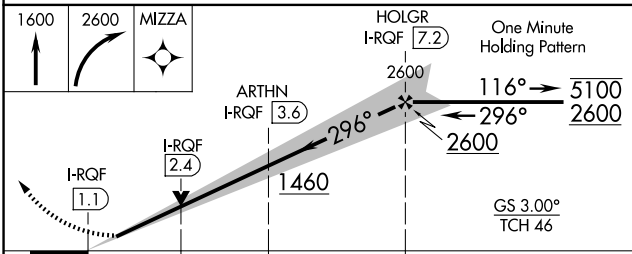
RNP APCH - GPS DME required.		MALS	MISSED APPROACH: Climb to 1600 then climbing right turn to 2600 direct MIZZA and hold.
Inop table does not apply to S-ILS 30. 			
ASOS 121.425	CINCINNATI APP CON 121.0 254.25	CLNC DEL 126.25	UNICOM 123.05 (CTAF)



EC-2, 11 JUN 2026 to 09 JUL 2026

EC-2, 11 JUN 2026 to 09 JUL 2026

ELEV 632	TDZE 619
----------	----------



CATEGORY	A	B	C	D
S-ILS 30	819- ³ / ₄		200 (200- ³ / ₄)	
S-LOC 30	1080- ³ / ₄	461 (500- ³ / ₄)	1080-1 ¹ / ₈	461 (500-1 ¹ / ₈)
CIRCLING	1280-1	648 (700-1)	1300-1 ³ / ₄ 668 (700-1 ³ / ₄)	1760-3 1128 (1200-3)