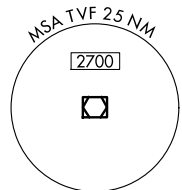
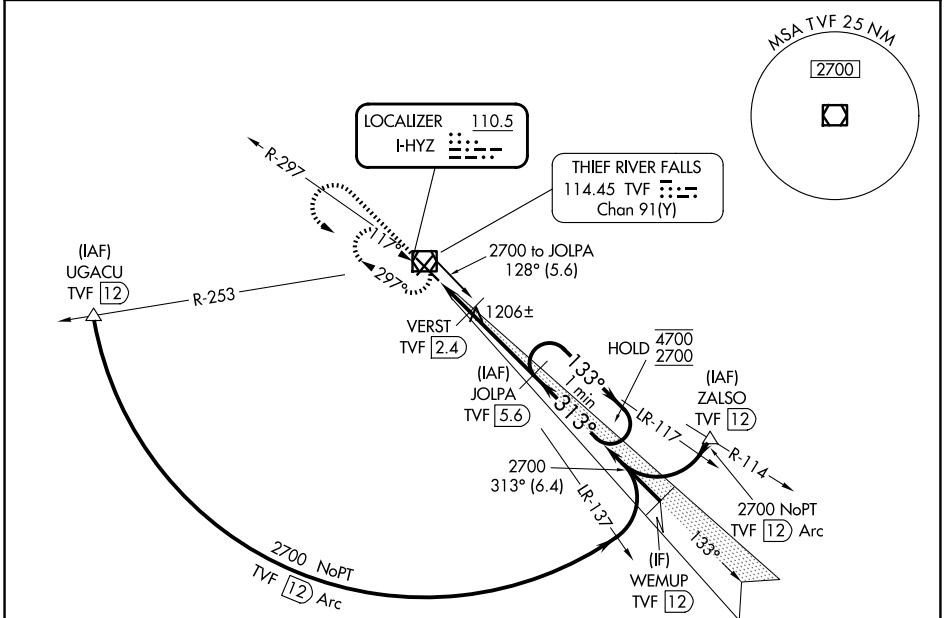


LOC I-HYZ <b>110.5</b>	APP CRS <b>313°</b>	Rwy Ldg 6304
		TDZE 1114
		Apt Elev 1119

# ILS or LOC RWY 31

THIEF RIVER FALLS RGNL (TVF)

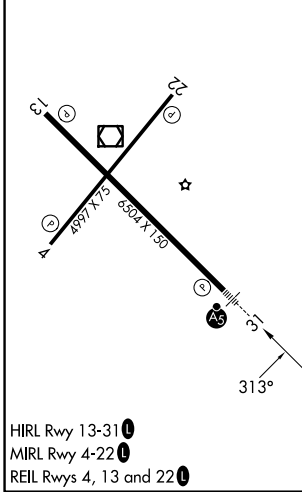
DME required for procedure entry. DME required.		MALSR	MISSED APPROACH: Climb to 2700 then left turn direct TVF VOR/DME and hold.
<p>▼ For inop ALS, increase S-LOC 31 Cat C/D visibility to 1 SM.</p> <p>▲ DME from TVF VOR/DME. Simultaneous reception of I-HYZ and TVF DME required.</p>			
AWOS-3PT <b>119,025</b>	MINNEAPOLIS CENTER <b>132.15 269.6</b>	UNICOM <b>122.8 (CTAF)</b>	



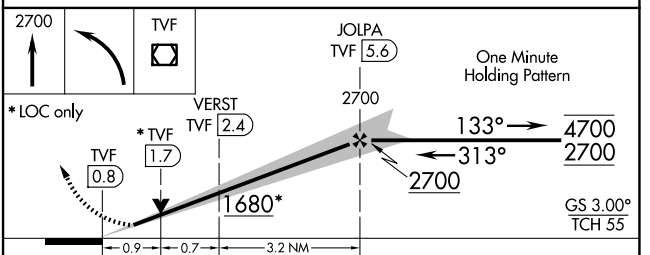
NC-1, 11 JUN 2026 to 09 JUL 2026

NC-1, 11 JUN 2026 to 09 JUL 2026

ELEV 1119	D	TDZE 1114
-----------	---	-----------



HIRL Rwy 13-31  
MIRL Rwy 4-22  
REIL Rwy 4, 13 and 22



CATEGORY	A	B	C	D
S-ILS 31	1314-1/2 200 (200-1/2)			
S-LOC 31	1460-1/2	346 (400-1/2)	1460-5/8	346 (400-5/8)
CIRCLING	1540-1 421 (500-1)	1580-1 461 (500-1)	1820-2 701 (800-2)	1980-2 3/4 861 (900-2 3/4)