

| | | |
|-------------|----------|-------------|
| APP CRS | Rwy Ldg | 4000 |
| 163° | TDZE | 746 |
| | Apt Elev | 746 |

RNAV (GPS) RWY 16

SHERMAN MUNI (SWI)

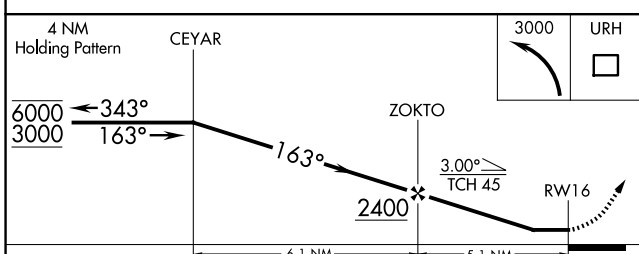
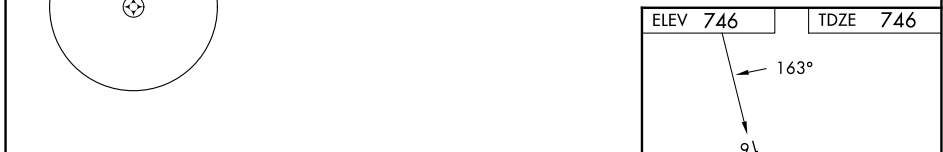
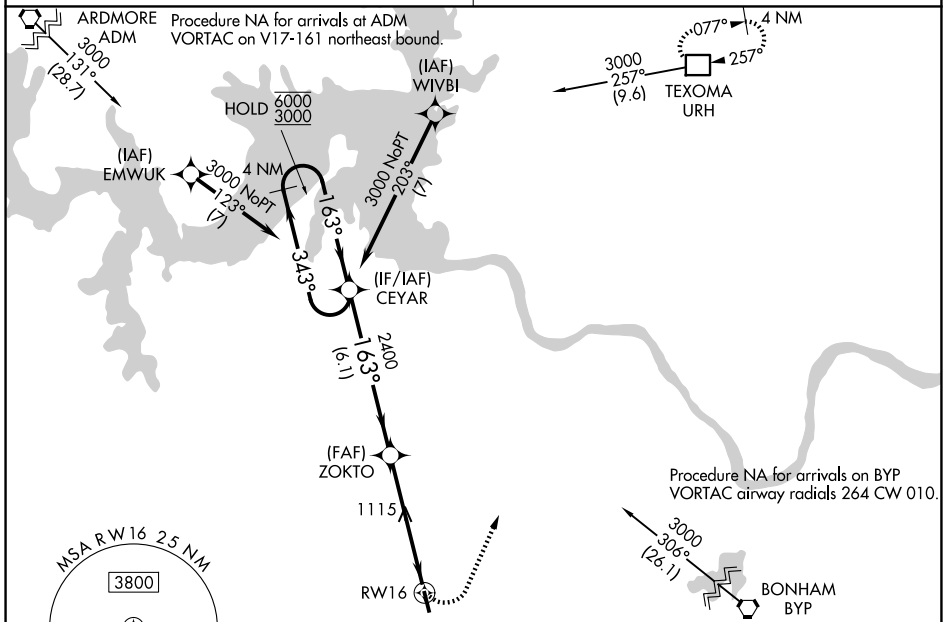
RNP APCH.

NA Use Sherman/Denison altimeter setting, if not received use Dallas Love Fld altimeter setting and increase all MDA 140 feet and increase LNAV visibility Cat B ¼ SM, Cat C ½ SM, and increase Circling visibility Cats A/B ¼ SM, Cat C ½ SM. Procedure NA at night. Rwy 16 helicopter visibility reduction below 1 SM NA.

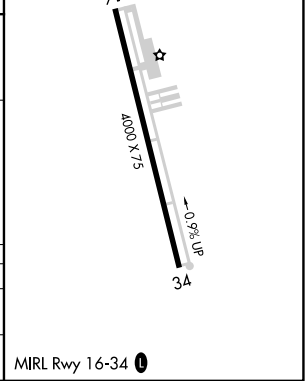
MISSED APPROACH: Climbing left turn to 3000 direct URH DME and hold.

FORT WORTH CENTER
124.75 323.0

UNICOM
122.8 (CTAF) 0



| CATEGORY | A | B | C | D |
|----------|--------|-------------|-------------------------|----|
| LNAV MDA | 1440-1 | 694 (700-1) | 1440-2 694 (700-2) | NA |
| CIRCLING | 1440-1 | 694 (700-1) | 1620-2½ 874 (900-2½) | NA |



SC-2, 11 JUN 2026 to 09 JUL 2026

SC-2, 11 JUN 2026 to 09 JUL 2026