

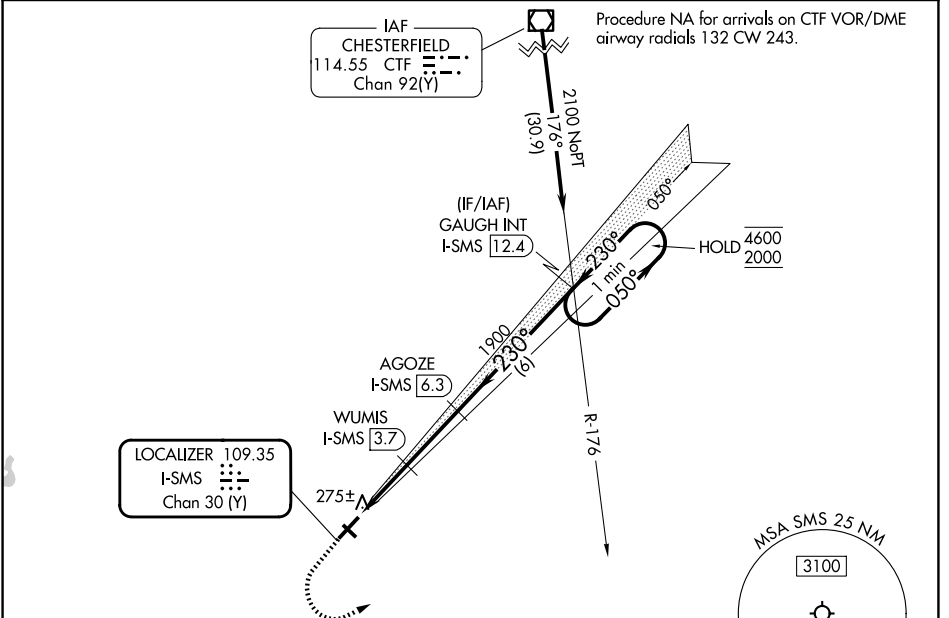
LOC/DME I-SMS 109.35 Chan 30 (Y)	APP CRS 230°	Rwy Ldg TDZE Apt Elev	5501 182 182
--	------------------------	-----------------------------	---

ILS or LOC RWY 23

SUMTER (SMS)

DME required.	ODALS	MISSED APPROACH: Climb to 600 then climbing left turn to 2000 on heading 050° and CTF VOR/DME R-176 to GAUGH INT/I-SMS 12.4 DME and hold.
<p>⚠ Circling NA to Rwy 14 and 32. Inop table does not apply to S-ILS 23 all Cats.</p>		

AWOS-3 118.075	SHAW APP CON * 125.4	UNICOM 122.7 (CTAF) ⓪
--------------------------	--------------------------------	--



ELEV 182	TDZE 182
----------	----------

230°

600

2000

hdg 050°

CTF R-176

GAUGH INT

One Minute Holding Pattern

GAUGH/INT I-SMS 12.4

AGOZE I-SMS 6.3

WUMIS I-SMS 3.7

I-SMS 2.1

I-SMS 1.1

1040

1900

050°

230°

4600

2000

GS 3.00°

TCH 44

1 NM 1.6 NM 2.7 NM 6 NM

600	2000	CTF R-176	GAUGH INT	One Minute Holding Pattern
hdg 050°				
GAUGH/INT I-SMS 12.4				
AGOZE I-SMS 6.3				
WUMIS I-SMS 3.7				
I-SMS 2.1				
I-SMS 1.1				
1040				
1900				
050°				
230°				
4600				
2000				
GS 3.00°				
TCH 44				
1 NM 1.6 NM 2.7 NM 6 NM				

CATEGORY	A	B	C	D
S-ILS 23		382- ³ / ₄	200 (200- ³ / ₄)	
S-LOC 23	540- ³ / ₄	358 (400- ³ / ₄)	540- ⁷ / ₈	358 (400- ⁷ / ₈)
CIRCLING	600-1 418 (500-1)	680-1 498 (500-1)	960-2 ¹ / ₄ 778 (800-2 ¹ / ₄)	960-2 ¹ / ₂ 778 (800-2 ¹ / ₂)

SE-2, 11 JUN 2026 to 09 JUL 2026

SE-2, 11 JUN 2026 to 09 JUL 2026