

# RNAV (GPS) RWY 8

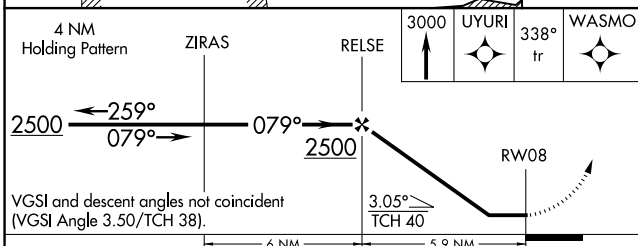
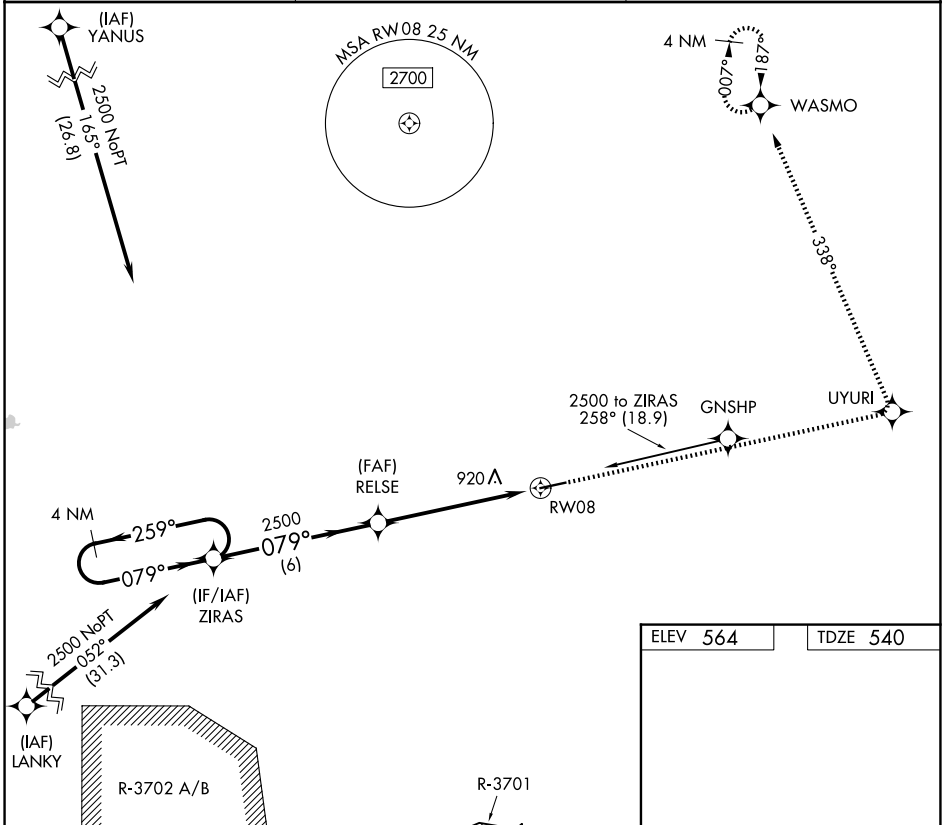
HOPKINSVILLE-CHRISTIAN COUNTY (HVC)

APP CRS	Rwy Ldg	<b>5505</b>
<b>079°</b>	TDZE	<b>540</b>
	Apt Elev	<b>564</b>

RNP APCH. **▽** Rwy 8 helicopter visibility reduction below 1 SM NA. When local altimeter setting not received, use Clarksville altimeter setting and increase all MDA 40 feet. Procedure NA at night. **▲** NA

MISSED APPROACH: Climb to 3000 direct UYURI and left turn via 338° track to WASMO and hold.

AWOS-3 <b>132.575</b>	CAMPBELL APP CON <b>118.1 269.525</b>	UNICOM <b>122.8 (CTAF) 0</b>
--------------------------	--	---------------------------------



ELEV 564	TDZE 540
----------	----------

Diagram of RWY 8 showing a 0.5% up-slope and 5505 X 100 dimensions. The runway is oriented 079° to RW08.

MIRL Rwy 8-26 **0**  
REIL Rwy 8 and 26 **0**

CATEGORY	A	B	C	D
LNVA MDA	1220-1	680 (700-1)	1220-2	1220-2 1/4
			680 (700-2)	680 (700-2 1/4)

SE-1, 11 JUN 2026 to 09 JUL 2026

SE-1, 11 JUN 2026 to 09 JUL 2026