

WAAS CH 82512 W05A	APP CRS 054°	Rwy Ldg TDZE 439 Apt Elev 439	6051
--	------------------------	---	-------------

RNAV (GPS) RWY 5

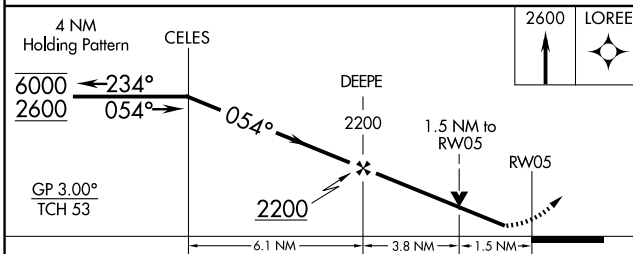
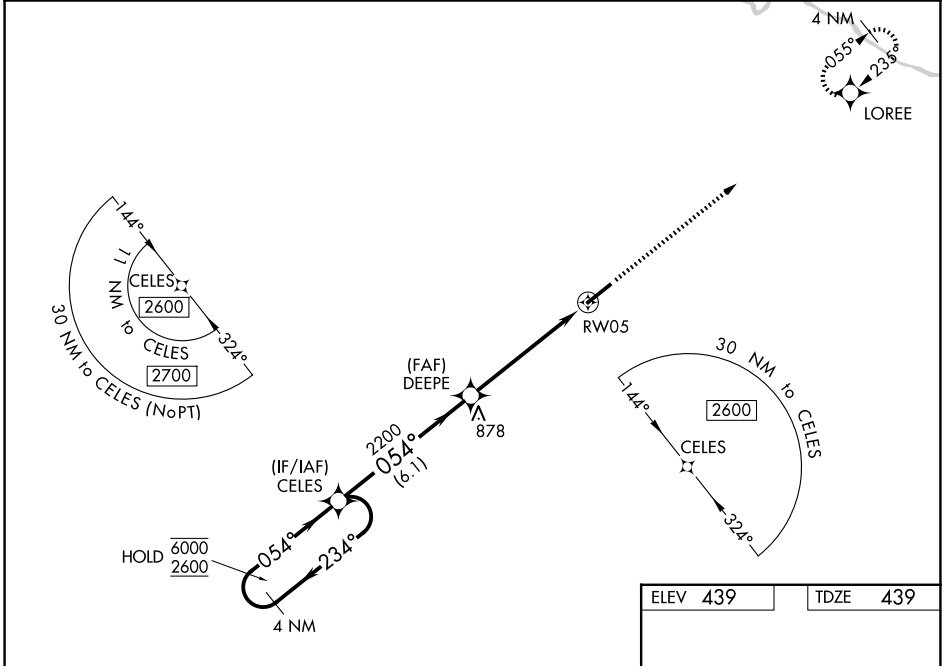
MADISONVILLE RGNL (2I0)

RNP APCH - GPS.

⚠ Baro-VNAV and VDP NA when using EVV altimeter setting. Rwy 5 helicopter visibility reduction below $\frac{3}{4}$ SM NA. For uncompensated Baro-VNAV systems, LNAV/VNAV NA below -1.5°C or above 54°C. When local altimeter setting not received, use EVV altimeter setting and increase LPV DA to 788 feet and all visibilities $\frac{1}{4}$ SM; increase LNAV/VNAV DA to 818 feet and all visibilities $\frac{1}{8}$ SM; increase all MDAs 100 feet and LNAV visibility Cat C/D $\frac{1}{4}$ SM, and Circling visibility Cat C $\frac{1}{4}$ SM.

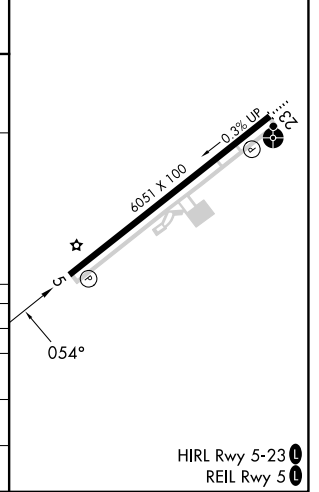
MISSED APPROACH:
Climb to 2600 direct LOREE and hold.

AWOS-3 126.475	EVANSVILLE APP CON* 124.025 290.9	CLNC DEL 120.1	UNICOM 122.7 (CTAF) 0
--------------------------	---	--------------------------	---------------------------------



ELEV 439	TDZE 439
----------	----------

CATEGORY	A	B	C	D
LPV DA		689- $\frac{3}{4}$	250 (300- $\frac{3}{4}$)	
LNAV/VNAV DA		719- $\frac{7}{8}$	280 (300- $\frac{7}{8}$)	
LNAV MDA	980-1	541 (600-1)	980-1 $\frac{5}{8}$	541 (600-1 $\frac{5}{8}$)
CIRCLING	980-1	541 (600-1)	980-1 $\frac{5}{8}$ 541 (600-1 $\frac{5}{8}$)	1340-3 901 (1000-3)



SE-1, 11 JUN 2026 to 09 JUL 2026

SE-1, 11 JUN 2026 to 09 JUL 2026