


LOC/DME I-GFK <b>109.1</b> Chan 28	APP CRS <b>354°</b>	Rwy Ldg <b>7351</b> TDZE <b>845</b> Apt Elev <b>845</b>
--	------------------------	---

# ILS or LOC RWY 35L

GRAND FORKS INTL (GFK)

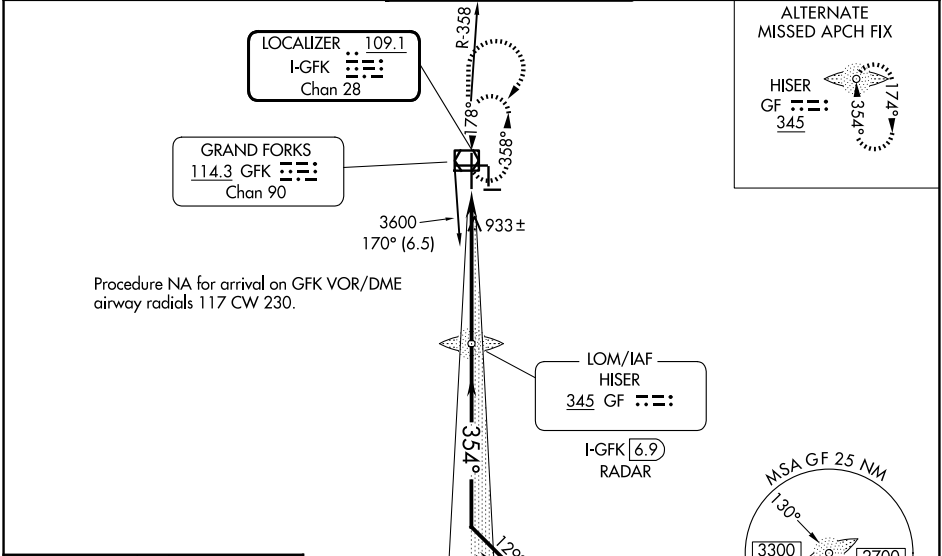
ADF or DME or RADAR required.

VDP NA when using CKN altimeter setting. When local altimeter setting not received, use CKN altimeter setting and increase DA to 1107 feet and all MDA 80 feet; increase S-LOC 35L Cats C/D/E visibility to RVR 4000 and Circling Cats C and E visibility ¼ SM. For inop ALS, increase S-ILS 35L Cat E visibility to RVR 4000 and S-LOC 35L Cat E visibility to RVR 5000. For inop ALS when using CKN altimeter setting, increase S-ILS 35L all Cats visibility to RVR 4500 and S-LOC 35L Cat C/D/E visibility to RVR 6000. Procedure turn NA for Cat E aircraft, RADAR required.

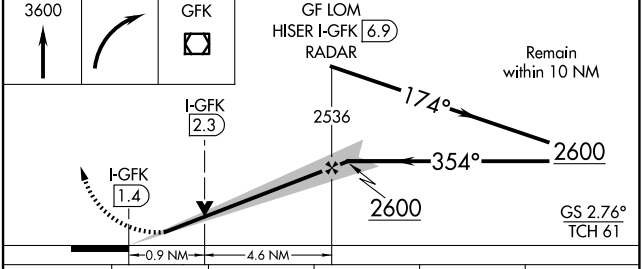
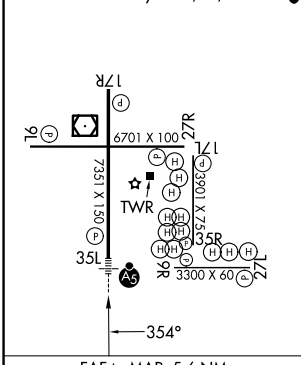
MALSR 

MISSED APPROACH:  
Climb to 3600 then right turn direct GFK VOR/DME and hold.

ATIS <b>119.4</b>	GRAND FORKS APP CON * <b>118.1 318.1</b>	GRAND FORKS TOWER * <b>118.4 (CTAF) 350.35</b>	GND CON <b>124.575</b>	UNICOM <b>122.95</b>
----------------------	---	---	---------------------------	-------------------------



ELEV 845	D	TDZE 845
MIRL Rwy 9L-27R, 9R-27L and 17L-35R		
HIRL Rwy 17R-35L		
REIL Rwy 17R, 9L, and 27R		



CATEGORY	A	B	C	D	E
S-ILS 35L	1045/24 200 (200-½)				
S-LOC 35L	1200/24	355 (400-½)	1200/30	355 (400-¾)	
CIRCLING	1260-1 415 (500-1)	1300-1 455 (500-1)	1400-1½ 555 (600-1½)	1420-2 575 (600-2)	1520-2½ 675 (700-2½)

NC-1, 11 JUN 2026 to 09 JUL 2026

NC-1, 11 JUN 2026 to 09 JUL 2026