

LOC/DME I-BJI 109.35 Chan 30 (Y)	APP CRS 253°	Rwy Ldg TDZE Apt Elev	5700 1389 1391
---	------------------------	-----------------------------	---

ILS or LOC RWY 25

BEMIDJI RGNL (BJI)

DME required. RADAR required for procedure entry.

MISSED APPROACH: Climb to 2300 then climbing left turn to 3400 on heading 185° and IDJ VOR/DME R-214 to CELIS/IDJ VOR/DME 8.1 DME and hold, continue climb-in-hold to 3400.



AWOS-3
119.275

MINNEAPOLIS CENTER
134.75 251.1

UNICOM
122.8 (CTAF)

LOCALIZER 109.35
I-BJI
Chan 30 (Y)

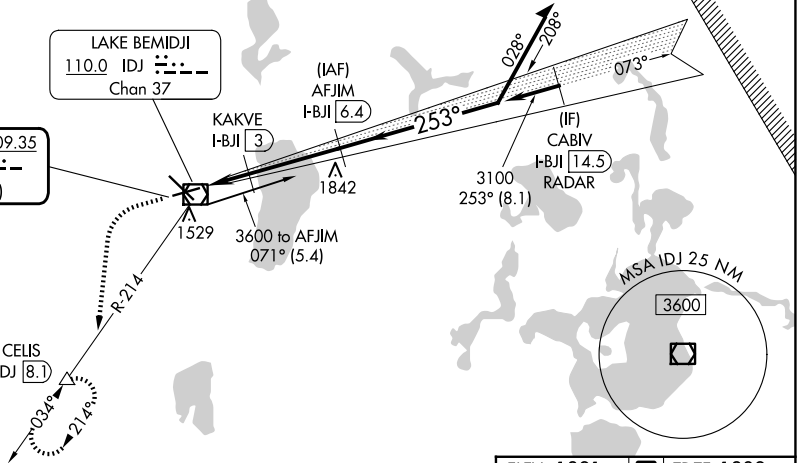
LAKE BEMIDJI
110.0 IDJ
Chan 37

KAKVE
I-BJI 3

(IAF)
AFJIM
I-BJI 6.4

(IF)
CABIV
I-BJI 14.5
RADAR

CELIS
IDJ 8.1



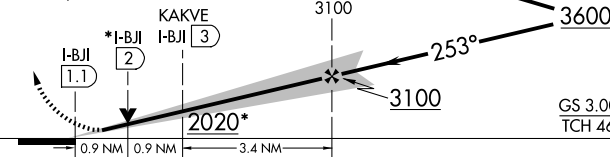
NC-1, 11 JUN 2026 to 09 JUL 2026

NC-1, 11 JUN 2026 to 09 JUL 2026

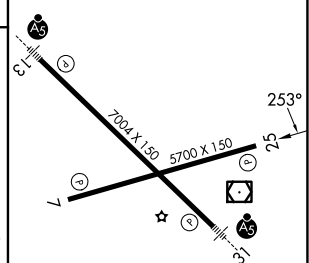
ELEV 1391 TDZE 1389

2300	3400	IDJ	CELIS
↑	hdg 185°	R-214	△

*LOC only



CATEGORY	A	B	C	D
S-ILS 25		1589-¾	200 (200-¾)	
S-LOC 25		1720-1	331 (400-1)	
CIRCLING	1840-1 449 (500-1)	1860-1 469 (500-1)	1860-1½ 469 (500-1½)	1960-2 569 (600-2)



HIRL Rwy 13-31
MRL Rwy 7-25
REIL Rws 7 and 25