

| | | |
|--|------------------------|---|
| WAAS CH 42719 W06A | APP CRS 065° | Rwy Ldg TDZE 301 Apt Elev 302 |
|--|------------------------|---|

RNAV (GPS) RWY 6

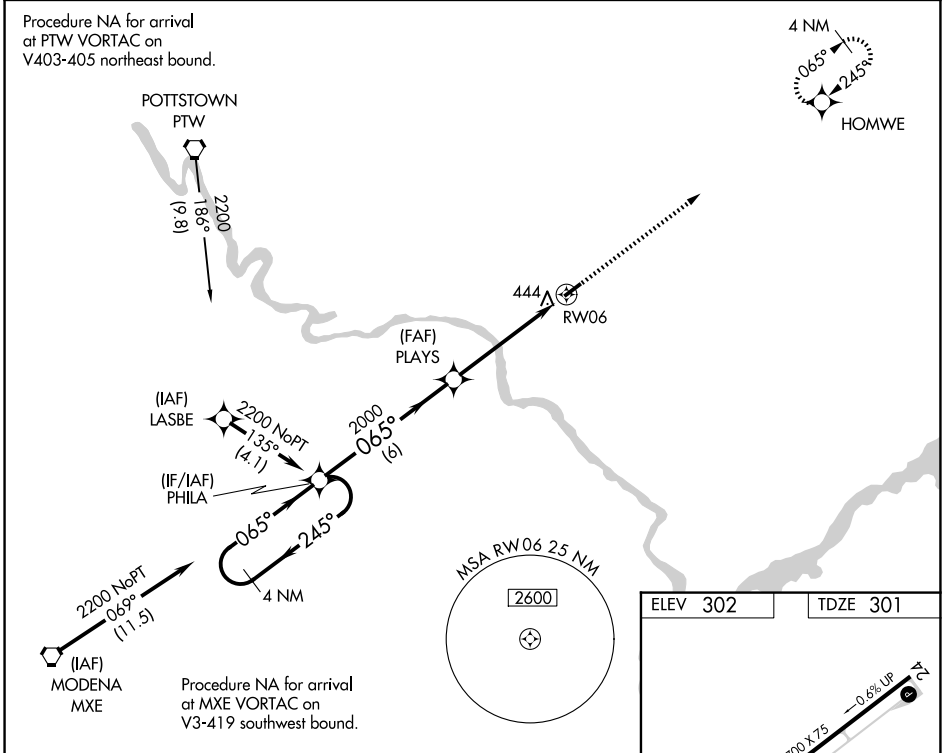
WINGS FLD (LOM)

RNP APCH.

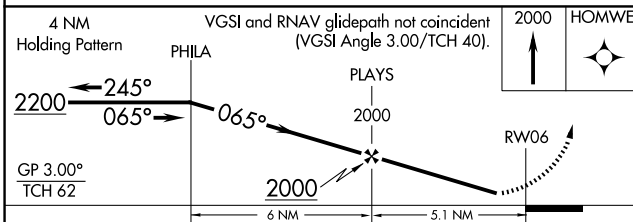
▼ Baro-VNAV NA when using Pottstown altimeter setting. For uncompensated Baro-VNAV systems, LNAV/VNAV NA below -15°C (5°F) or above 54°C (130°F). When local altimeter setting not received, use Pottstown altimeter setting and increase all DA 35 feet and all MDA 40 feet; increase LPV Cats A/B visibility ½ mile. Rwy 6 helicopter visibility reduction below ¾ SM NA.

MISSED APPROACH: Climb to 2000 direct HOMWE and hold.

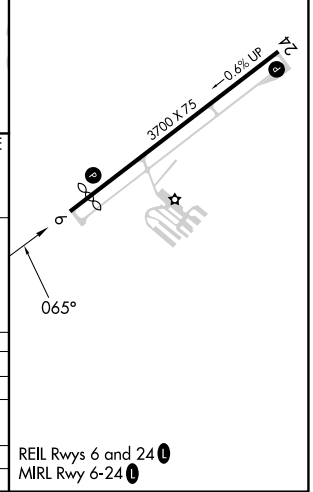
| | | | |
|--------------------------|---|--------------------------|-------------------------------|
| AWOS-3 118.925 | PHILADELPHIA APP CON 126.85 263.125 | CLNC DEL 135.3 | UNICOM 123.0 (CTAF) |
|--------------------------|---|--------------------------|-------------------------------|



| | |
|----------|----------|
| ELEV 302 | TDZE 301 |
|----------|----------|



| CATEGORY | A | B | C | D |
|--------------|--------|--------------|---|----|
| LPV DA | 614-1 | 313 (400-1) | | NA |
| LNAV/VNAV DA | 788-1¾ | 487 (500-1¾) | | NA |
| LNAV MDA | 720-1 | 419 (500-1) | | NA |
| CIRCLING | 780-1 | 478 (500-1) | | NA |



REIL Rwy 6 and 24
MIRL Rwy 6-24

NE-4, 11 JUN 2026 to 09 JUL 2026

NE-4, 11 JUN 2026 to 09 JUL 2026