

WAAS CH 50311 W05A	APP CRS 050°	Rwy Ldg TDZE 3999 1906 Apt Elev 1915
--	------------------------	---

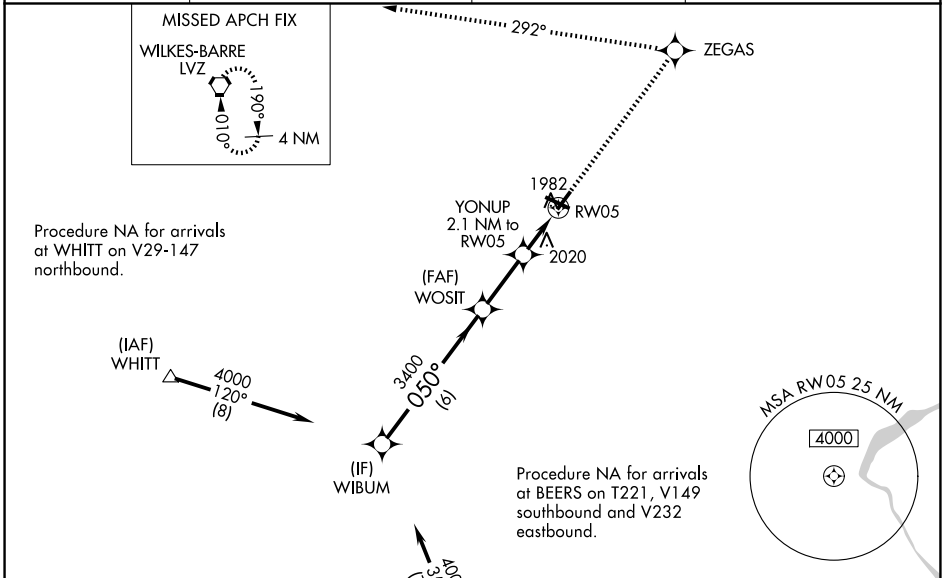
RNAV (GPS) RWY 5

POCONO MOUNTAINS RGNL (MPO)

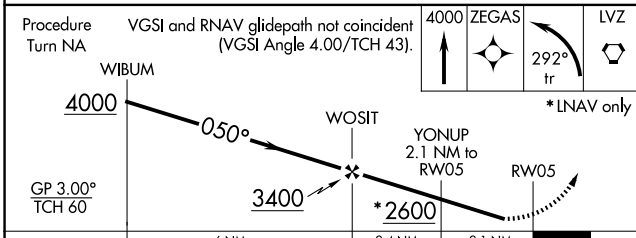
⚠ Baro-VNAV NA when using Wilkes-Barre/Scranton altimeter setting. For uncompassated Baro-VNAV systems, LNAV/VNAV NA below -18°C (0°F) or above 45°C (113°F).
⚠ DME/DME RNP-0.3 NA. Rwy 5 helicopter visibility reduction below ¾ SM NA. When local altimeter setting not received, use Wilkes-Barre/Scranton altimeter setting: increase LPV DA to 2339 feet, LNAV/VNAV DA to 2431 feet and all visibilities ¼ SM; increase all MDAs 180 feet and visibility Cat C and D ½ SM. Circling Rwy 23 NA at night.

MISSED APPROACH: Climb to 4000 direct ZEGAS and left turn via 292° track to LVZ VORTAC and hold.

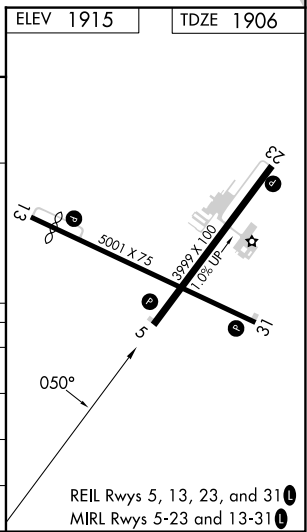
ASOS 120.275	WILKES-BARRE APP CON 126.3 256.7	CLNC DEL 125.3	UNICOM 122.7 (CTAF) 📻
------------------------	--	--------------------------	--



Procedure Turn NA VGSI and RNAV glidepath not coincident (VGSI Angle 4.00/TCH 43).
 4000 ZEGAS
 292° tr
 LVZ
 *LNAV only



CATEGORY	A	B	C	D
LPV DA	2160-1		254 (300-1)	
LNAV/VNAV DA	2252-1¼		346 (400-1¼)	
LNAV MDA	2320-1	414 (500-1)	2320-1¼	414 (500-1¼)
CIRCLING	2480-1 565 (600-1)	2500-1 585 (600-1)	2600-2 685 (700-2)	2660-2½ 745 (800-2½)



NE-4, 11 JUN 2026 to 09 JUL 2026

NE-4, 11 JUN 2026 to 09 JUL 2026