

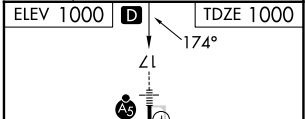
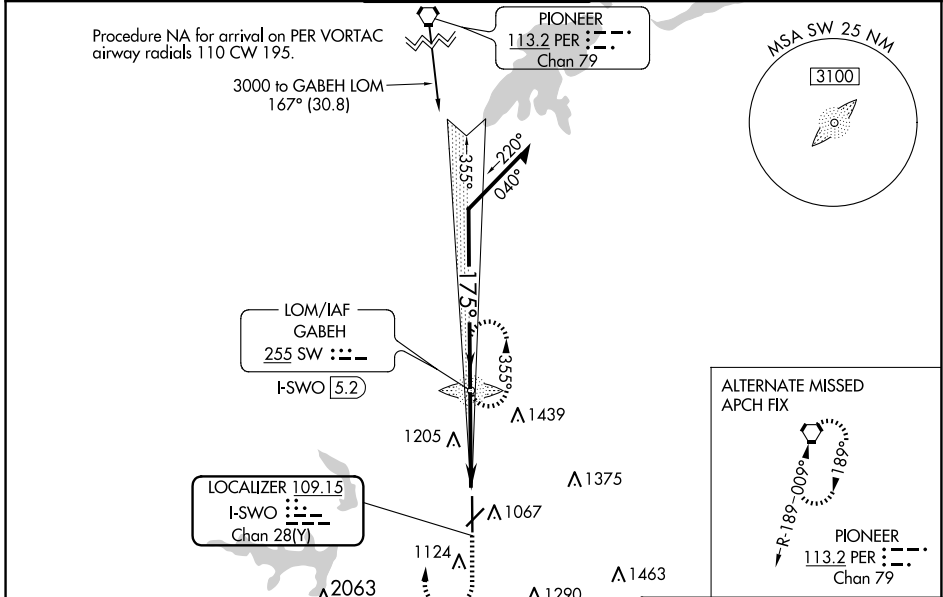
LOC/DME I-SWO 109.15 Chan 28 (Y)	APP CRS 175°	Rwy Idg 7401 TDZE 1000 Apt Elev 1000
--	------------------------	---

ILS or LOC RWY 17

STILLWATER RGNL (SWO)

ADF required.	MALSR AS	MISSED APPROACH: Climb to 1500 then climbing right turn to 3200 direct GABEH LOM and hold, continue climb-in-hold to 3200.
<p>▼ VDP NA when using Ponca City altimeter setting. When local altimeter setting not received, use Ponca City altimeter setting and increase S-ILS 17 DA to 1280 feet; increase all MDAs 80 feet and S-LOC 17 visibility Cats C/D 1/8 SM, and increase Circling Cat C visibility 1/2 SM and Cat D visibility 1/2 SM. For inop ALS when using Ponca City altimeter setting, increase S-ILS 17 all Cats visibility to 7/8 SM.</p>		

ASOS 135.725	KANSAS CITY CENTER 127.8 319.1	STILLWATER TOWER ★ 125.35 (CTAF) 0	GND CON 121.6	UNICOM 122.95
------------------------	--	--	-------------------------	-------------------------



CATEGORY	A	B	C	D
S-ILS 17		1200-1/2	200 (200-1/2)	
S-LOC 17	1460-1/2	460 (500-1/2)	1460-7/8	460 (500-7/8)
CIRCLING	1460-1 460 (500-1)	1480-1 480 (500-1)	1540-1 1/2 540 (600-1/2)	1740-2 1/4 740 (800-2/4)

REIL Rwy 35	
MIRL Rwy 4-22 and 17-35	
FAF to MAP 3.8 NM	
Knots	60 90 120 150 180
Min:Sec	3:48 2:32 1:54 1:31 1:16

SC-1, 11 JUN 2026 to 09 JUL 2026

SC-1, 11 JUN 2026 to 09 JUL 2026