

LOC/DME I-AFJ <b>110.3</b> Chan <b>40</b>	APP CRS <b>273°</b>	Rwy Ldg TDZE <b>1184</b> Apt Elev <b>1184</b>
---	------------------------	---

# ILS or LOC RWY 27

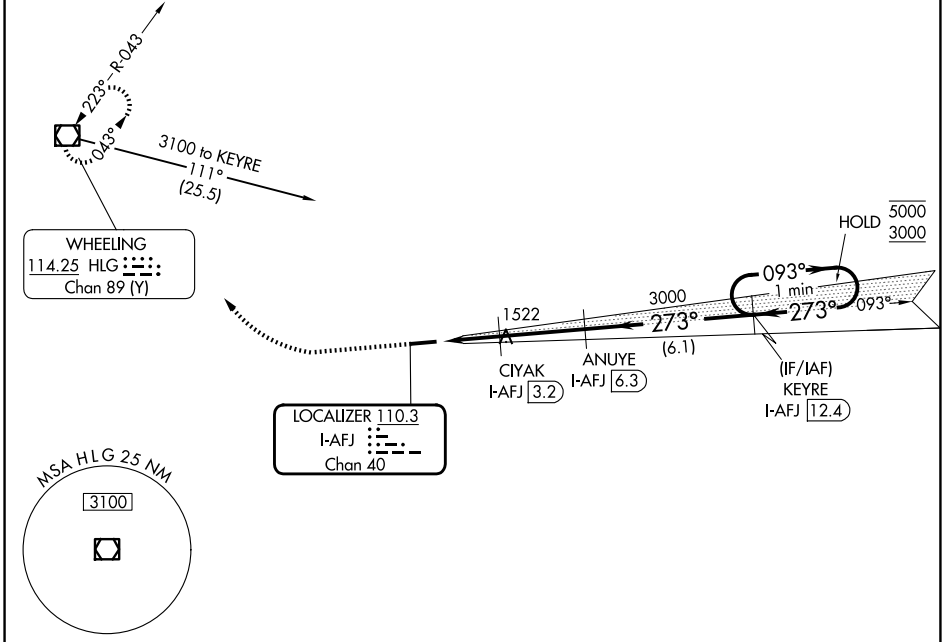
WASHINGTON COUNTY (AFJ)

DME required. RADAR required for procedure entry.

▼ Circling NA for Cat D N of Rwy 9-27. Rwy 27 helicopter visibility reduction below 3/4 NA. Circling Rwy 9 NA at night.

▲ NA MISSED APPROACH: Climb to 1700 then climbing right turn to 3300 direct HLG VOR/DME and hold.

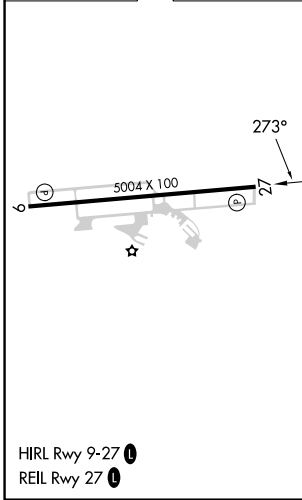
AWOS-3PT <b>119.175</b>	PITTSBURGH APP CON <b>119.35 285.575</b>	CLNC DEL <b>127.3</b>	UNICOM <b>122.975 (CTAF) 0</b>
----------------------------	---	--------------------------	-----------------------------------



NE-4, 11 JUN 2026 to 09 JUL 2026

NE-4, 11 JUN 2026 to 09 JUL 2026

ELEV <b>1184</b>	TDZE <b>1184</b>
------------------	------------------



1700	3300	HLG	VGSI and ILS glidepath not coincident (VGSI Angle 3.09/TCH 62).	
↑	↷	☐		
ANUYE I-AFJ [6.3]		KEYRE I-AFJ [12.4]	One Minute Holding Pattern	
3000	3000	3000	5000 3000	
1980	3000	3000	GS 3.09° TCH 57	
1.7 NM	0.6 NM	3.1 NM	6.1 NM	
CATEGORY	A	B	C	D
S-ILS 27	1386-3/4 202 (300-3/4)			
S-LOC 27	1780-1	596 (600-1)	1780-1 3/4	596 (600-1 3/4)
CIRCLING	1800-1 616 (700-1)	2020-1 1/4 836 (900-1 1/4)	2020-2 1/2 836 (900-2 1/2)	2040-2 3/4 856 (900-2 3/4)