

WAAS CH <b>65840</b> <b>W32A</b>	APP CRS <b>318°</b>	Rwy Ldg <b>3034</b> TDZE <b>49</b> Apt Elev <b>49</b>
--	------------------------	---

# RNAV (GPS) RWY 32

COLUSA COUNTY (008)

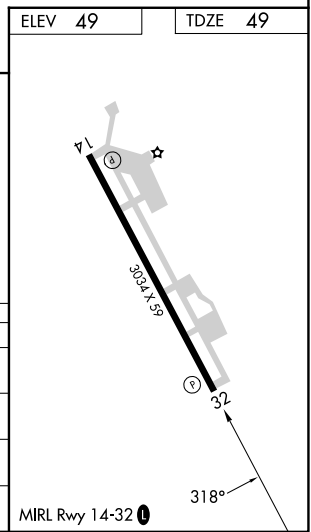
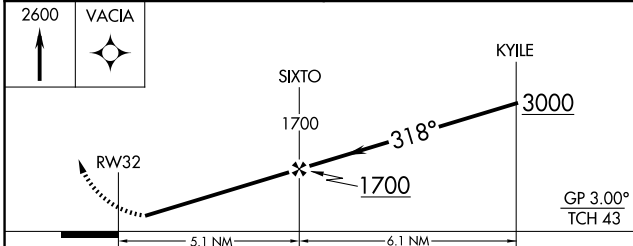
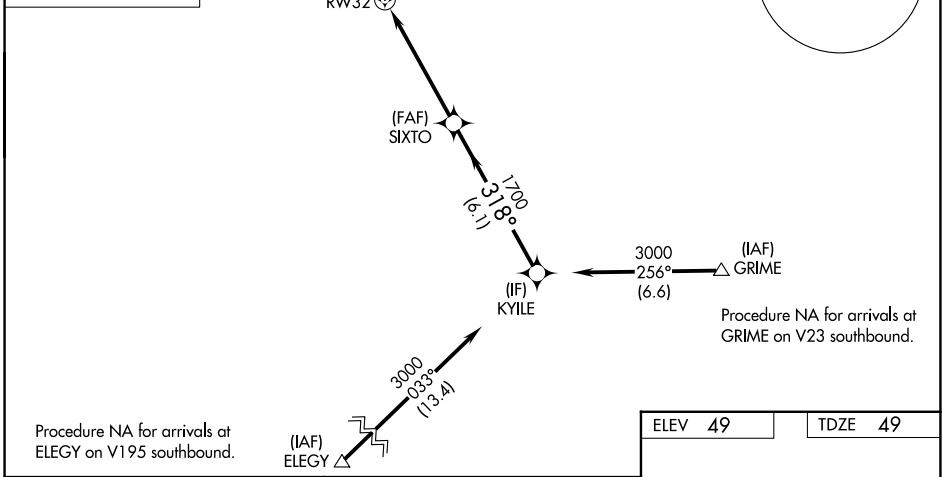
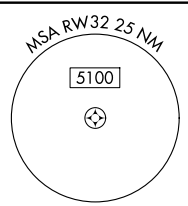
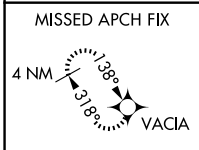
RNP APCH - GPS.

**NA** Baro-VNAV NA when using Sacramento Intl altimeter setting. Rwy 32 helicopter visibility reduction below 1 SM NA. For uncompensated Baro-VNAV systems, LNAV/VNAV NA below -15°C or above 54°C. Procedure NA at night. Obtain local altimeter setting on CTAF; when not received, use Sacramento Intl altimeter setting: increase LPV DA to 381 feet, increase LNAV/VNAV DA to 551 feet and all visibilities ¼ SM; increase all MDAs 100 feet and LNAV Cat C visibility ¼ SM and Circling Cat C visibility ½ SM.

MISSED APPROACH: Climb to 2600 direct VACIA and hold.

OAKLAND CENTER  
**132.2 350.3**

UNICOM  
**122.8 (CTAF) 0**



CATEGORY	A	B	C	D
LPV DA	299-1	250 (300-1)		NA
LNAV/VNAV DA	469-1½	420 (500-1½)		NA
LNAV MDA	520-1	471 (500-1)	520-1¾ 471 (500-1¾)	NA
CIRCLING	600-1	551 (600-1)	620-1½ 571 (600-1½)	NA

SW-2, 11 JUN 2026 to 09 JUL 2026

SW-2, 11 JUN 2026 to 09 JUL 2026