

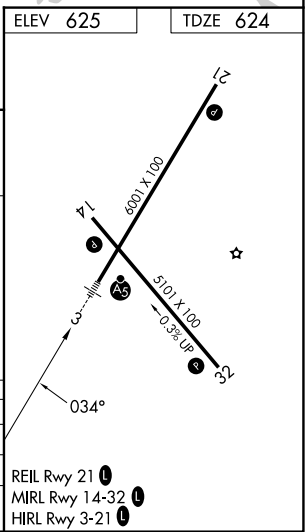
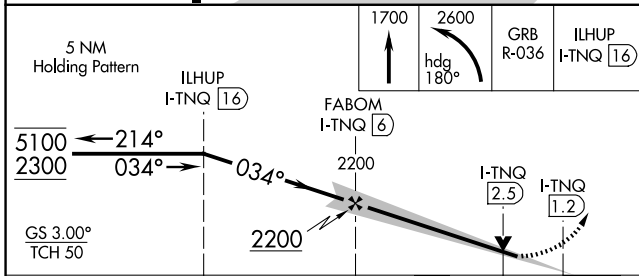
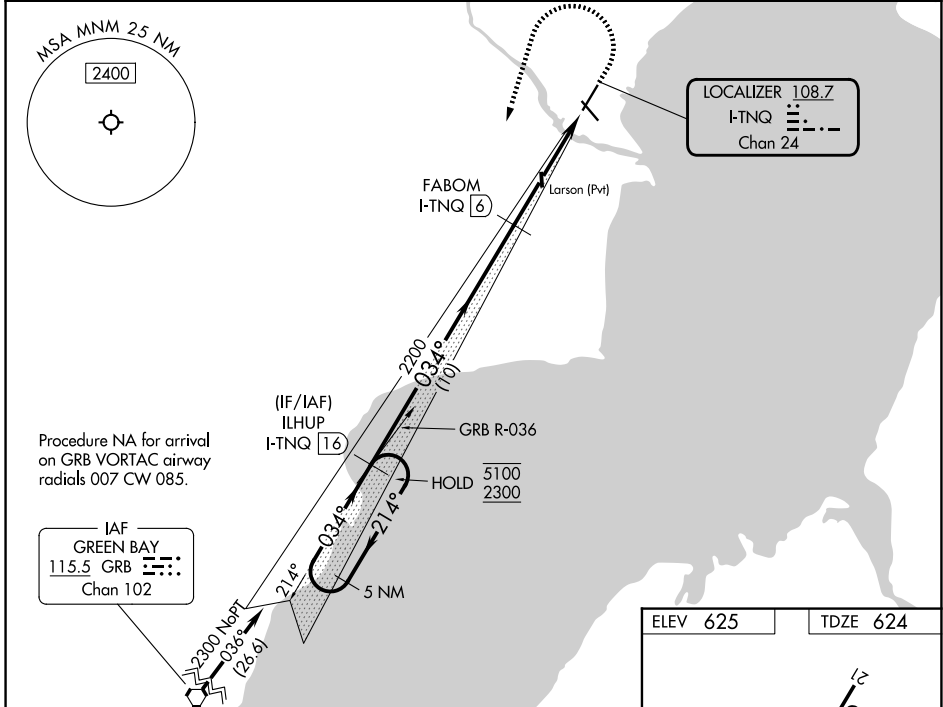
LOC/DME I-TNQ <b>108.7</b> Chan <b>24</b>	APP CRS <b>034°</b>	Rwy Ldg TDZE Apt Elev	<b>6001</b> <b>624</b> <b>625</b>
---	------------------------	-----------------------------	---

# ILS or LOC RWY 3

MENOMINEE RGNL (MNM)

DME required.	Autopilot coupled approach NA below 1830. Circling Rwy 14, 32 NA at night. Rwy 3 helicopter visibility reduction below 3/4 SM NA. NA Inop table does not apply to S-ILS 3 all Cats and S-LOC 3 Cats A and B. For inop ALS, increase S-LOC 3 Cats C and D visibility to 1 1/8 SM.	MALSR 	MISSED APPROACH: Climb to 1700 then climbing left turn to 2600 on heading 180° and GRB R-036 to ILHUP/I-TNQ 1 1/8 DME and hold.

AWOS-3PT <b>121.45</b>	GREEN BAY APP CON ★ <b>120.3 338.2</b>	UNICOM <b>122.8 (CTAF)</b>
---------------------------	---	-------------------------------



CATEGORY	A	B	C	D
S-ILS 3		900-1	276 (300-1)	
S-LOC 3		1080-1	456 (500-1)	
CIRCLING	1200-1	575 (600-1)	1200-1 1/2 575 (600-1 1/2)	1380-2 1/2 755 (800-2 1/2)

EC-1, 11 JUN 2026 to 09 JUL 2026

EC-1, 11 JUN 2026 to 09 JUL 2026