

LOC I-AOH <b>109.3</b>	APP CRS <b>276°</b>	Rwy Idg TDZE Apt Elev	<b>6000</b> <b>975</b> <b>975</b>
---------------------------	------------------------	-----------------------------	---

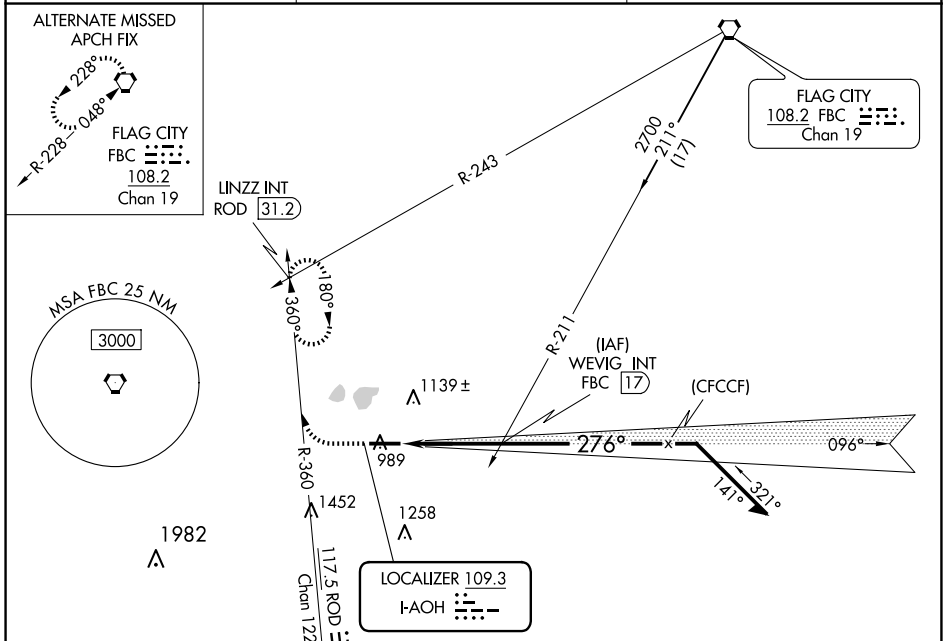
# ILS or LOC RWY 28

LIMA ALLEN COUNTY (AOH)

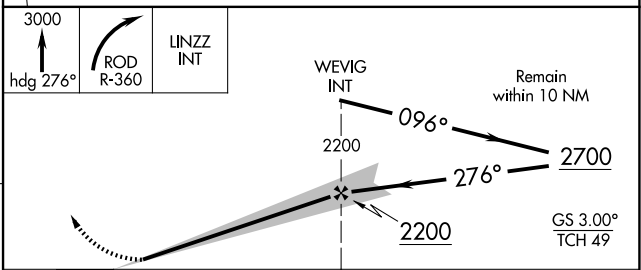
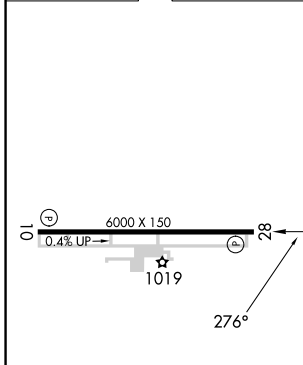
**NA** When local altimeter setting not received, use Findlay altimeter setting and increase S-ILS DA to 1255 and all MDA's 80 feet; increase S-ILS all Cats visibility 1/8 SM, S-LOC Cats C/D and Circling Cats C/D visibility 1/2 SM.

**MISSED APPROACH:** Climb to 3000 on heading 276° and right turn on ROD VORTAC R-360 to LINZZ INT/ROD 31.2 DME and hold.

ASOS <b>128.725</b>	COLUMBUS APP CON <b>121.825 323.15</b>	UNICOM <b>122.7 (CTAF) 0</b>
------------------------	---	---------------------------------



ELEV 975	TDZE 975
----------	----------



REIL Rwys 10 and 28				
HIRL Rwy 10-28				
FAF to MAP 3.7 NM				
Knots	60	90	120	150
Min:Sec	3:42	2:28	1:51	1:29
CATEGORY	A	B	C	D
S-ILS 28	1175-3/4		200 (200-3/4)	
S-LOC 28	1500-1	525 (600-1)	1500-1 1/2	525 (600-1 1/2)
CIRCLING	1500-1	525 (600-1)	1540-1 1/2	1820-2 3/4
			565 (600-1 1/2)	845 (900-2 3/4)

EC-2, 11 JUN 2026 to 09 JUL 2026

EC-2, 11 JUN 2026 to 09 JUL 2026