

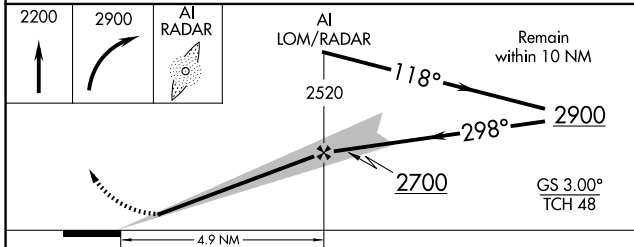
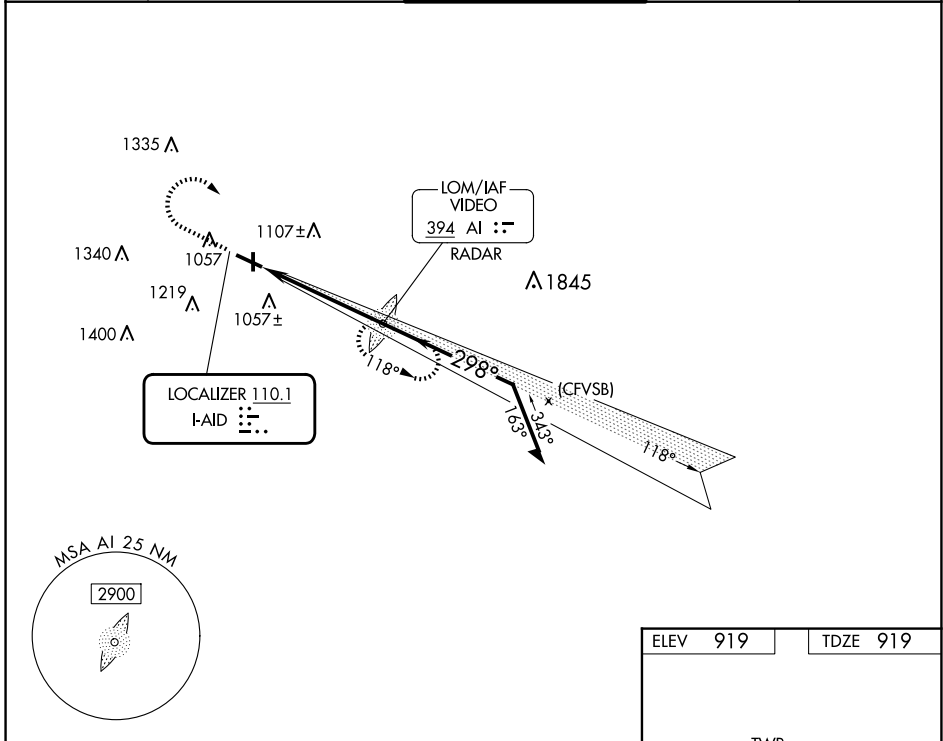
LOC I-AID <b>110.1</b>	APP CRS <b>298°</b>	Rwy ldg TDZE Apt Elev	<b>5320</b> <b>919</b> <b>919</b>
---------------------------	------------------------	-----------------------------	---

# ILS or LOC RWY 30

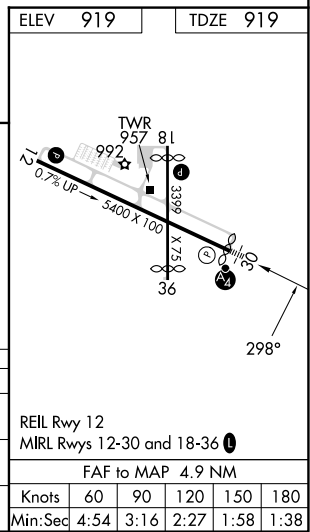
ANDERSON RGNL (AID)

ADF required. RADAR required for procedure entry.	MALSF ☹️	MISSED APPROACH: Climb to 2200 then climbing right turn to 2900 direct VIDEO LOM/RADAR and hold.
⚠️ Rwy 30 helicopter visibility reduction below 3/4 SM NA. ⚠️ For inop ALS, increase S-ILS 30 all Cats visibility to 3/8 SM.		

AWOS-3 <b>128.55</b>	INDIANAPOLIS APP CON <b>120.65 317.8</b>	ANDERSON TOWER * <b>126.0 (CTAF) 0</b>	GND CON <b>121.6</b>	UNICOM <b>122.95</b>
-------------------------	---	---	-------------------------	-------------------------



CATEGORY	A	B	C	D
S-ILS 30	1209-3/4 290 (300-3/4)			
S-LOC 30	1440-3/4	521 (600-3/4)	1440-1 1/4	521 (600-1 1/4)
CIRCLING	1440-1	521 (600-1)	1520-1 3/4	1520-2
			601 (700-1 3/4)	601 (700-2)



REIL Rwy 12  
MIRL Rwy 12-30 and 18-36

FAF to MAP 4.9 NM

Knots	60	90	120	150	180
Min:Sec	4:54	3:16	2:27	1:58	1:38

EC-2, 11 JUN 2026 to 09 JUL 2026

EC-2, 11 JUN 2026 to 09 JUL 2026