

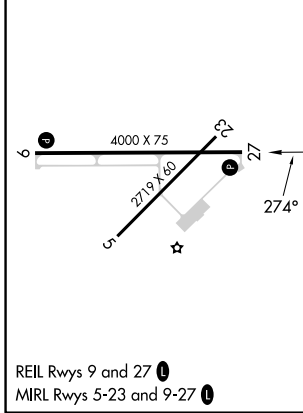
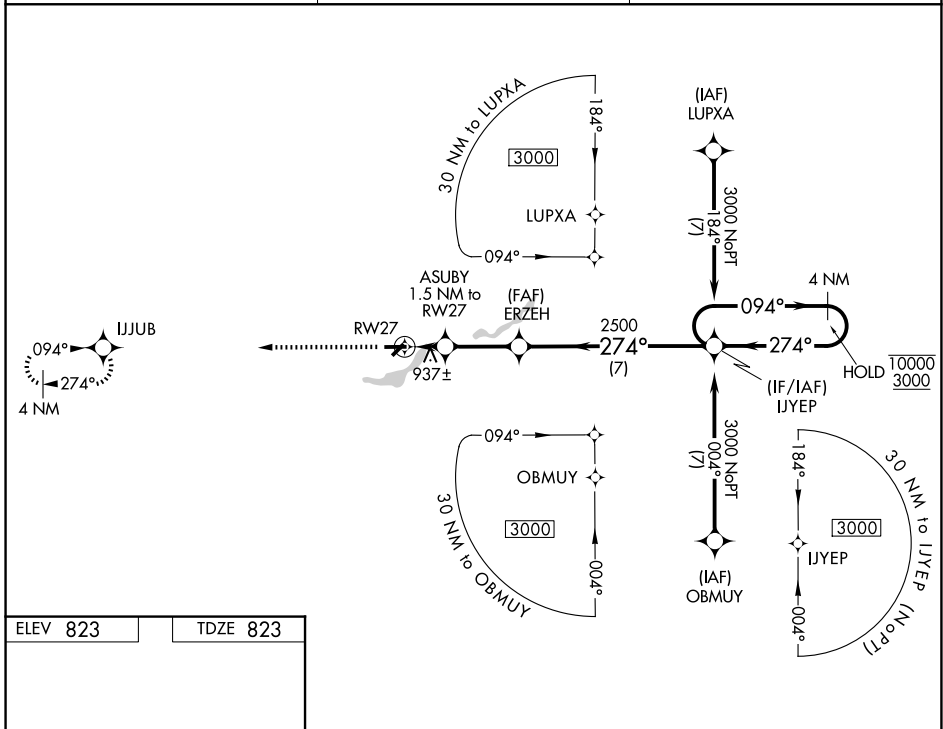
APP CRS 274°	Rwy Ldg TDZE Apt Elev	4000 823 823
------------------------	-----------------------------	---

RNAV (GPS) RWY 27

THREE RIVERS MUNI/DR HAINES (HAI)

RNP APCH - GPS.	<p>⚠ Procedure NA at night. Rwy 27 helicopter visibility reduction below 1 SM NA. ⚠ When local altimeter setting not received, use SBN altimeter setting and increase all MDAs 100 feet and LNAV visibility Cat C 3/8 SM, and Circling visibility Cat C 1/4 SM.</p>	MISSED APPROACH: Climb to 3000 direct IJUB and hold.
-----------------	--	--

AWOS-3P 119.975	GREAT LAKES APP CON ★ 121.2 239.25	UNICOM 122.8 (CTAF) ①
---------------------------	--	---------------------------------



3000	IJUB	VGSI and descent angles not coincident (VGSI Angle 4.00/TCH 34).	4 NM Holding Pattern	
↑	✦			
ERZEH	ASUBY 1.5 NM to RW27	274°	IJYEP	
2500	1440	274°	10000 3000	
1.5 NM	2.7 NM	7 NM		
CATEGORY	A	B	C	D
LNAV MDA	1200-1 377 (400-1)			NA
CIRCLING	1240-1 417 (500-1)	1420-1 597 (600-1)	1460-1 637 (700-1 3/4)	NA

EC-1, 11 JUN 2026 to 09 JUL 2026

EC-1, 11 JUN 2026 to 09 JUL 2026