

| | | |
|-------------|----------|-------------|
| APP CRS | Rwy Ldg | 7000 |
| 091° | TDZE | 695 |
| | Apt Elev | 703 |

COPTER RNAV (GPS) RWY 9

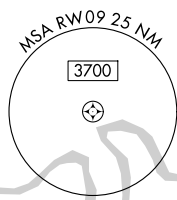
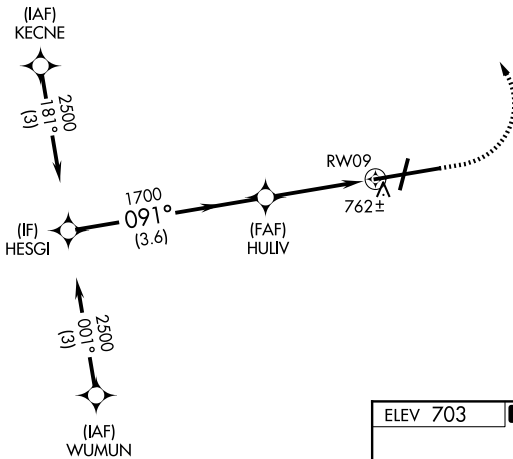
HAGERSTOWN RGNL/RICHARD A HENSON FLD (HGR)

▼ DME/DME RNP-0.3 NA. VDP NA with Martinsburg altimeter setting. When local altimeter setting not received, use Martinsburg altimeter setting and increase MDA 80 feet.

MISSED APPROACH: Climb to 1200 then climbing left turn to 2500 direct YIYUN and hold.

| | | | | |
|------------------------|---|---|-------------------------|-------------------------|
| ASOS 126.375 | POTOMAC APP CON 126.825 239.025 | HAGERSTOWN TOWER * 120.3 (CTAF) 0 225.4 | GND CON 120.8 | UNICOM 122.95 |
|------------------------|---|---|-------------------------|-------------------------|

Limit initial and intermediate approach to 90K.
Limit final and missed approach to 70K.
Increase to 90K upon reaching the missed approach altitude.



| | | |
|----------|----------|----------|
| ELEV 703 | D | TDZE 695 |
|----------|----------|----------|

REIL Rwy 2 and 20
REIL Rwy 9 **⬇**
MIRL Rwy 2-20
HIRL Rwy 9-27 **⬇**

| | | | | |
|--|------------------------|------|------|-------|
| VGSIs and descent angles not coincident (VGSIs Angle 3.00/TCH 55). | | 1200 | 2500 | YIYUN |
| | | | | |
| CATEGORY | COPTER | | | |
| LNAV MDA | 1020-1/2 325 (400-1/2) | | | |

NE-3, 11 JUN 2026 to 09 JUL 2026

NE-3, 11 JUN 2026 to 09 JUL 2026