

WAAS CH <b>77614</b> <b>W01A</b>	APP CRS <b>005°</b>	Rwy Ldg TDZE <b>410</b> Apt Elev <b>420</b>	<b>4003</b>
--	------------------------	---	-------------

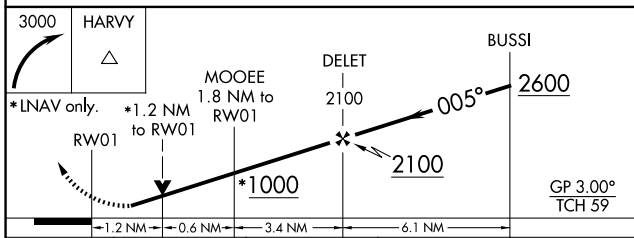
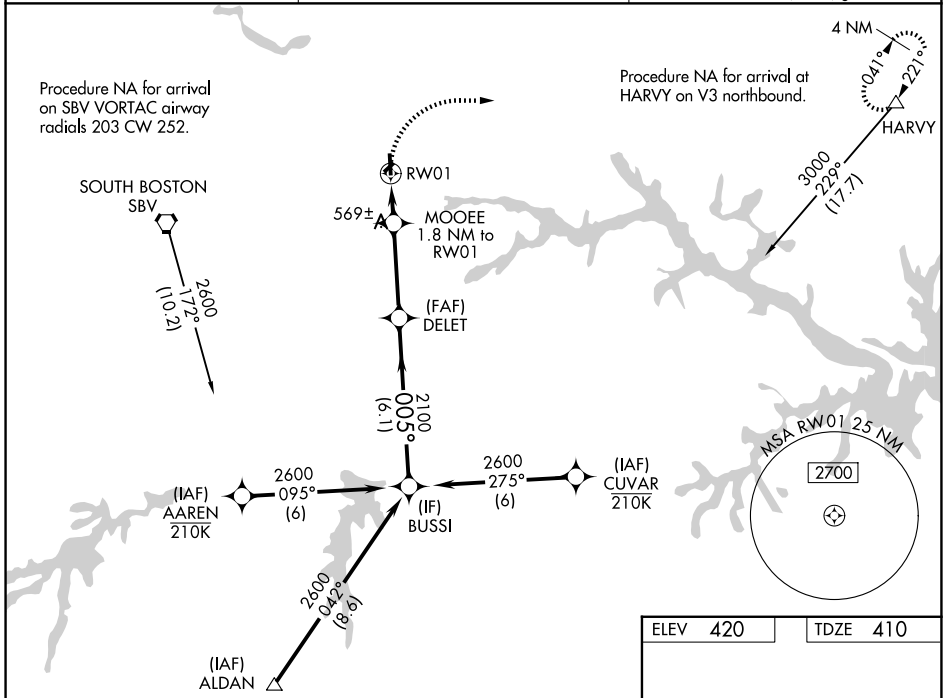
# RNAV (GPS) RWY 1

WILLIAM M TUCK (W78)

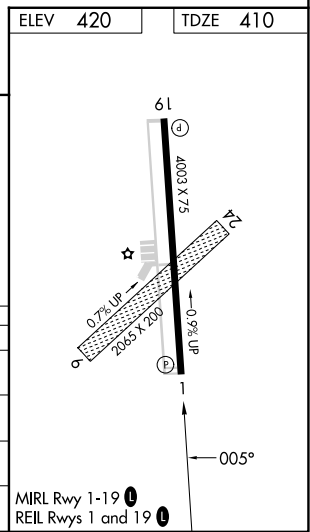
**⚠** For uncompensated Baro-VNAV systems, LNAV/VNAV NA below -15°C (5°F) or above 54°C (130°F).  
**⚠** DME/DME RNP-0.3 NA. Helicopter visibility reduction below 1 SM NA. When local altimeter setting not received, use Danville altimeter setting and increase LPV DA to 739 feet and LNAV/VNAV DA to 785 feet and all MDA 100 feet; increase LPV all Cats visibility 1/8 mile and LNAV/VNAV all Cats visibility and Circling Cat C visibility 1/4 mile and LNAV Cat C visibility 1/2 mile. Night landing: Rwy 19 NA. Baro-VNAV and VDP NA when using Danville altimeter setting. Circling NA to Rwys 6-24.

**MISSED APPROACH:**  
 Climbing right turn to 3000 direct HARVY and hold.

AWOS-3 <b>119.425</b>	WASHINGTON CENTER <b>124.05 352.0</b>	UNICOM <b>122.8 (CTAF) 0</b>
--------------------------	--	---------------------------------



CATEGORY	A	B	C	D
LPV DA	660-1	250 (300-1)		NA
LNAV/VNAV DA	706-1	296 (300-1)		NA
LNAV MDA	820-1	410 (400-1)	820-1 1/8 410 (400-1 1/8)	NA
CIRCLING	960-1	540 (600-1)	1060-1 3/4 640 (700-1 3/4)	NA



NE-3, 11 JUN 2026 to 09 JUL 2026

NE-3, 11 JUN 2026 to 09 JUL 2026