

LOC I-CWF	APP CRS	Rwy Ldg	<b>10702</b>
<b>110.7</b>	<b>154°</b>	TDZE	<b>16</b>
		Apt Elev	<b>17</b>

# ILS or LOC RWY 15

CHENNAULT INTL (CWF)

ADF or DME required for procedure entry. ADF or DME required for LOC only.

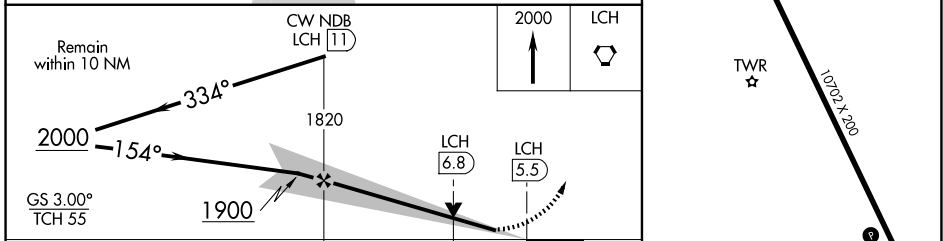
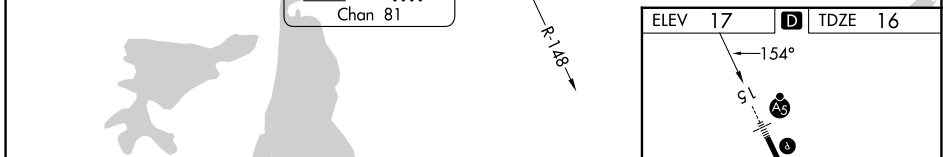
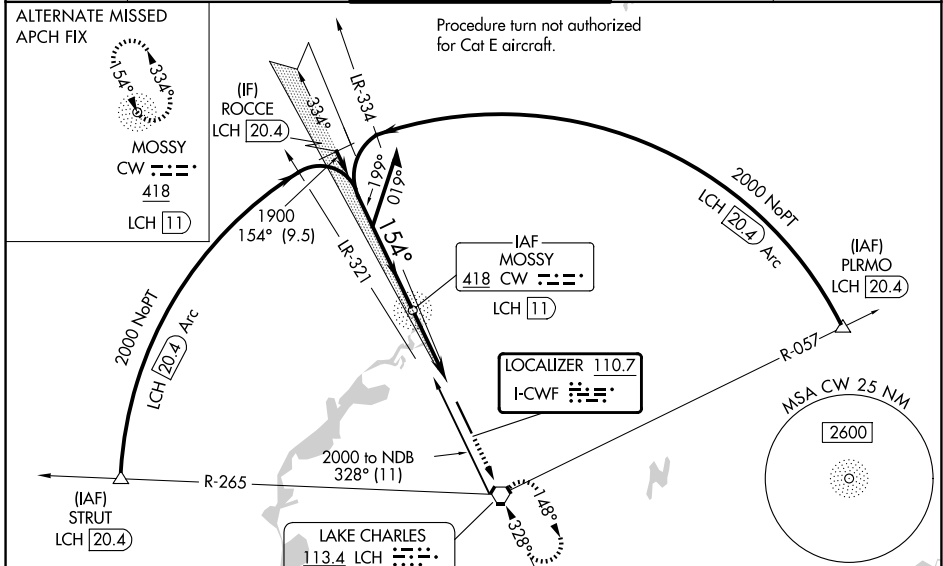
**NA** VDP NA when using Lake Charles Rgnl altimeter setting. When local altimeter setting not received, use Lake Charles Rgnl altimeter setting: Increase DA to 232 feet; Increase all MDAs 20 feet and visibility Circling Cat D 1/4 SM. For inop ALS, increase S-ILS 15 Cat E visibility to 3/4 SM, and S-LOC 15 Cats C/D/E to 1 3/8 SM. For inop ALS when using Lake Charles altimeter settings, increase S-ILS 15 Cat E visibility to 3/4 SM, and S-LOC 15 Cats C/D/E to 1 3/8 SM. DME from LCH VORTAC. DME use requires simultaneous reception of I-CWF and LCH DME.

**ASR**

**MALSRS**

**MISSED APPROACH:** Climb to 2000 direct LCH VORTAC and hold, continue climb-in-hold to 2000.

ATIS	LAKE CHARLES APP CON*	CHENNAULT TOWER*	GND CON	UNICOM
<b>120.0</b>	<b>119.8 282.3</b>	<b>124.2 (CTAF) 290.4</b>	<b>121.65 275.8</b>	<b>122.95</b>



CATEGORY	A	B	C	D	E	REIL Rwy 33	HIRL Rwy 15-33	
S-ILS 15	216-1/2					200 (200-1/2)	480-1	464 (500-1)
S-LOC 15	480-1/2	464 (500-1/2)	480-1		464 (500-1)	FAF to MAP 5.5 NM		
CIRCLING	640-1	623 (700-1)	640-1 3/4	740-2 1/4	900-3	Knots	60 90 120 150 180	
			623 (700-1 3/4)	723 (800-2 1/4)	883 (900-3)	Min:Sec	5:30 3:40 2:45 2:12 1:50	

SC-4, 11 JUN 2026 to 09 JUL 2026

SC-4, 11 JUN 2026 to 09 JUL 2026