

APP CRS	Rwy Ldg	4204
088°	TDZE	818
	Apt Elev	835

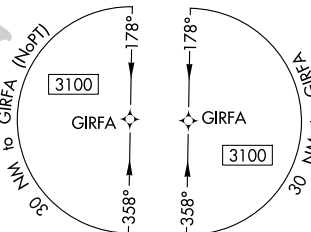
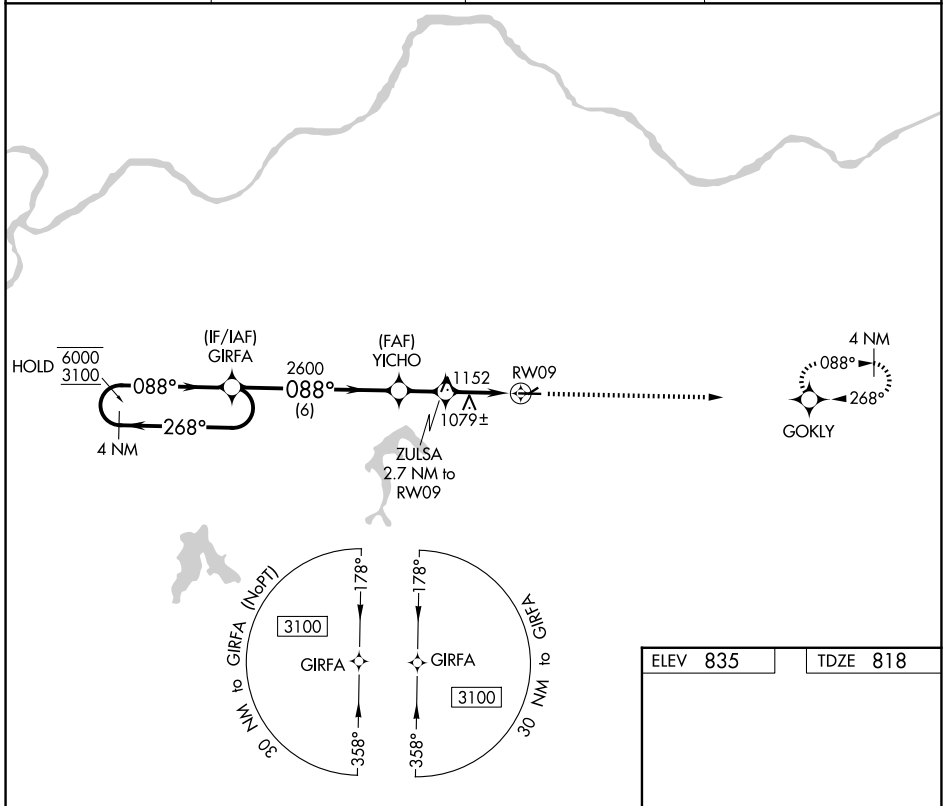
RNAV (GPS) RWY 9

EAST KANSAS CITY (3GV)

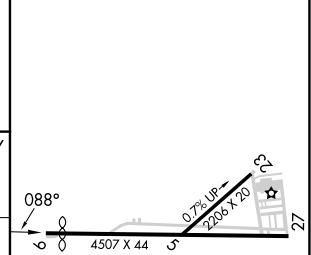
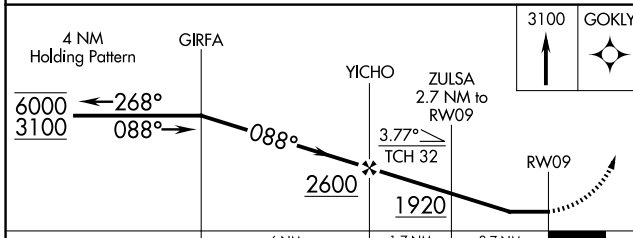
RNP APCH - GPS.	
NA	Procedure NA at night. Rwy 9 helicopter visibility reduction below 1 SM NA. Use Kansas City Downtown/Wheeler Fld altimeter setting.

MISSED APPROACH: Climb to 3100 direct GOKLY and hold.

MKC ASOS 120.75	KANSAS CITY APP CON 118.4 307.35	CLNC DEL 121.3	UNICOM 122.8 (CTAF) 0
---------------------------	--	--------------------------	---------------------------------



ELEV 835	TDZE 818
----------	----------



CATEGORY	A	B	C	D
LNVA MDA	1400-1	582 (600-1)		NA
CIRCLING	1460-1	625 (700-1)		NA

REIL Rwy 9 **0**
MIRL Rwy 9-27 **0**

NC-3, 11 JUN 2026 to 09 JUL 2026

NC-3, 11 JUN 2026 to 09 JUL 2026