

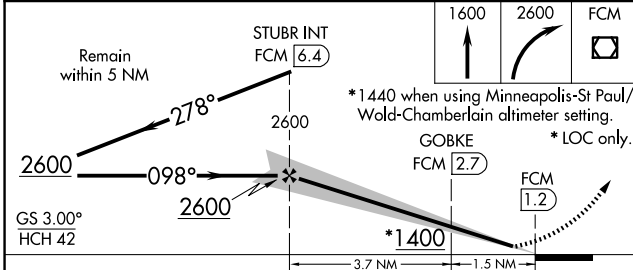
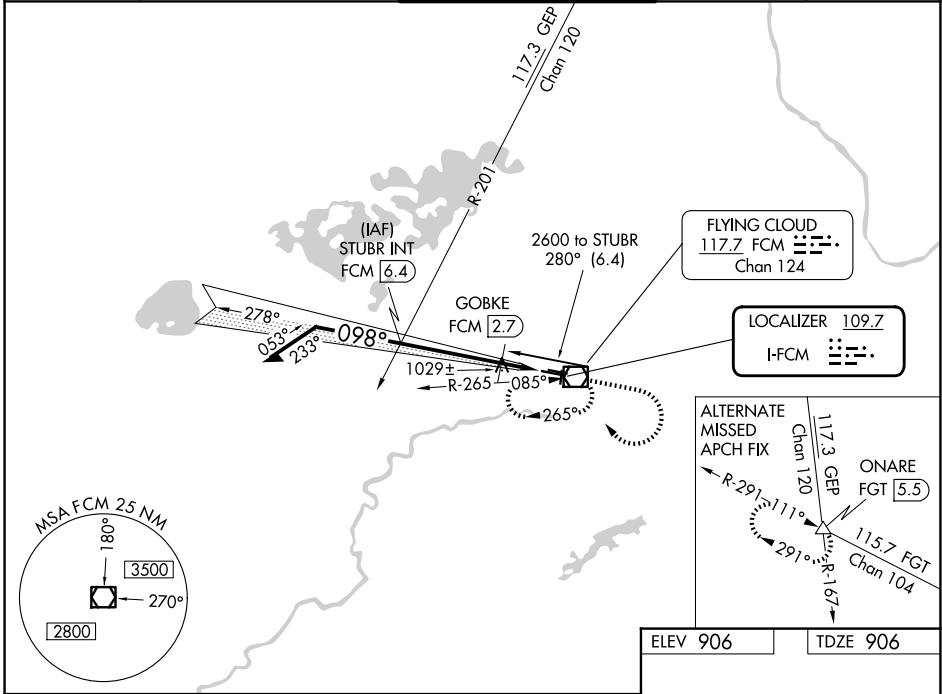
LOC F-FCM 109.7	APP CRS 098°	Rwy Ldg TDZE Apt Elev	5001 906 906
---------------------------	------------------------	-----------------------------	---

COPTER ILS or LOC RWY 10R

FLYING CLOUD (FCM)

<p>▼ For inoperative MALSR, increase visibility to ½ mile. When local altimeter setting not received, use Minneapolis-St Paul Intl-Wold Chamberlain altimeter setting and increase DA 34 feet and all MDA 40 feet.</p>	<p>MALSR</p>	<p>MISSED APPROACH: Climb to 1600 then climbing right turn to 2600 direct FCM VOR/DME and hold, continue climb-in-hold to 2600.</p>
---	--------------	---

ATIS 124.9	MINNEAPOLIS APP CON 134.7 284.7	FLYING CLOUD TOWER* 125.2 (N) 119.15 (S) (CTAF) 0	GND CON 121.7	UNICOM 122.95
----------------------	---	---	-------------------------	-------------------------



ELEV 906	TDZE 906												
<p>HIRL Rwy 10R-28L 1</p> <p>REIL Rwys 10L and 28R</p> <p>REIL Rwys 18, 28L, and 36 1</p> <p>MIRL Rwy 10L-28R</p> <p>MRL Rwy 18-36 1</p>													
<p>FAF to MAP 5.2 NM</p> <table border="1"> <tr> <td>Knots</td> <td>45</td> <td>60</td> <td>75</td> <td>90</td> <td>105</td> </tr> <tr> <td>Min:Sec</td> <td>6:56</td> <td>5:12</td> <td>4:10</td> <td>3:28</td> <td>2:58</td> </tr> </table>		Knots	45	60	75	90	105	Min:Sec	6:56	5:12	4:10	3:28	2:58
Knots	45	60	75	90	105								
Min:Sec	6:56	5:12	4:10	3:28	2:58								

CATEGORY	COPTER
H-ILS 10R	1106-¼ 200 (200-¼)
H-LOC 10R	1400-¼ 494 (500-¼)
GOBKKE FIX MINIMUMS (DME REQUIRED)	
H-LOC 10R	1280-¼ 374 (400-¼)

NC-1, 11 JUN 2026 to 09 JUL 2026

NC-1, 11 JUN 2026 to 09 JUL 2026