

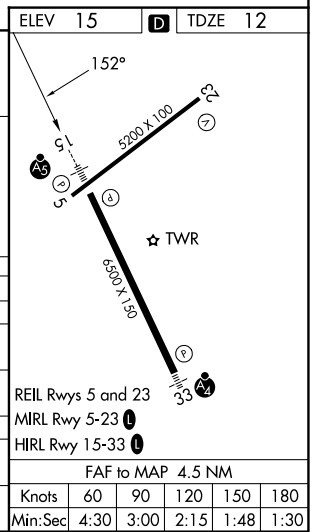
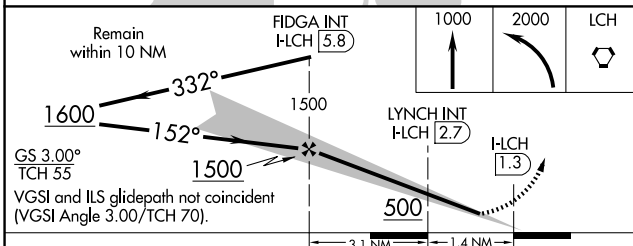
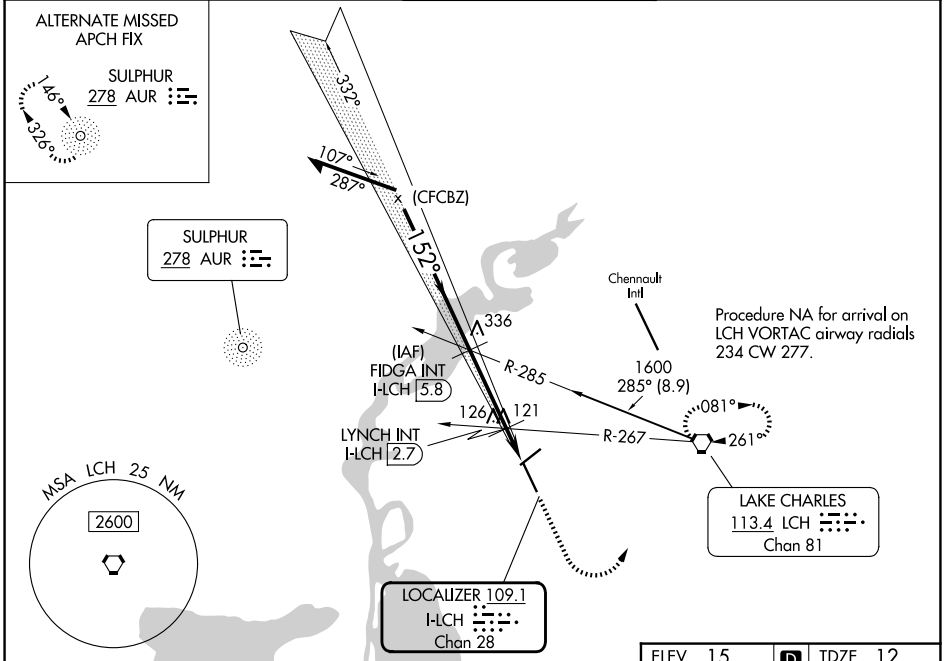
LOC/DME I-LCH 109.1 Chan 28	APP CRS 152°	Rwy Ldg 6500 TDZE 12 Apt Elev 15
---	------------------------	---

ILS or LOC RWY 15

LAKE CHARLES RGNL (LCH)

<p>⚠ For inop ALS, increase S-LOC 15 Cats C and D visibility to 1½ mile. * RVR 1800 authorized with use of FD or AP or HUD to DA.</p> <p>ASR</p>	<p>MALSR</p>	<p>MISSED APPROACH: Climb to 1000 then climbing left turn to 2000 direct LCH VORTAC and hold, continue climb-in-hold to 2000.</p>
---	--------------	---

ATIS 118.75	LAKE CHARLES APP CON* 119.35 353.75	LAKE CHARLES TOWER* 120.7 (CTAF) 257.8	GND CON 121.8	UNICOM 122.95
-----------------------	---	--	-------------------------	-------------------------



CATEGORY	A	B	C	D
S-ILS 15*	212/24 200 (200-½)			
S-LOC 15	500/24	488 (500-½)	500/50	488 (500-1)
CIRCLING	500-1	485 (500-1)	580-1½ 565 (600-1½)	680-2 665 (700-2)
LYNCH FIX MINIMUMS (DUAL VOR RECEIVERS OR DME REQUIRED)				
S-LOC 15	440/24	428 (500-½)	440/40	428 (500-¾)
CIRCLING	440-1 425 (500-1)	480-1 465 (500-1)	580-1½ 565 (600-1½)	680-2 665 (700-2)

SC-4, 11 JUN 2026 to 09 JUL 2026

SC-4, 11 JUN 2026 to 09 JUL 2026

REIL Rwy 5 and 23	MIRL Rwy 5-23	HIRL Rwy 15-33			
FAF to MAP 4.5 NM					
Knots	60	90	120	150	180
Min:Sec	4:30	3:00	2:15	1:48	1:30