

# RNAV (GPS) RWY 12

SOMERSET (SMQ)

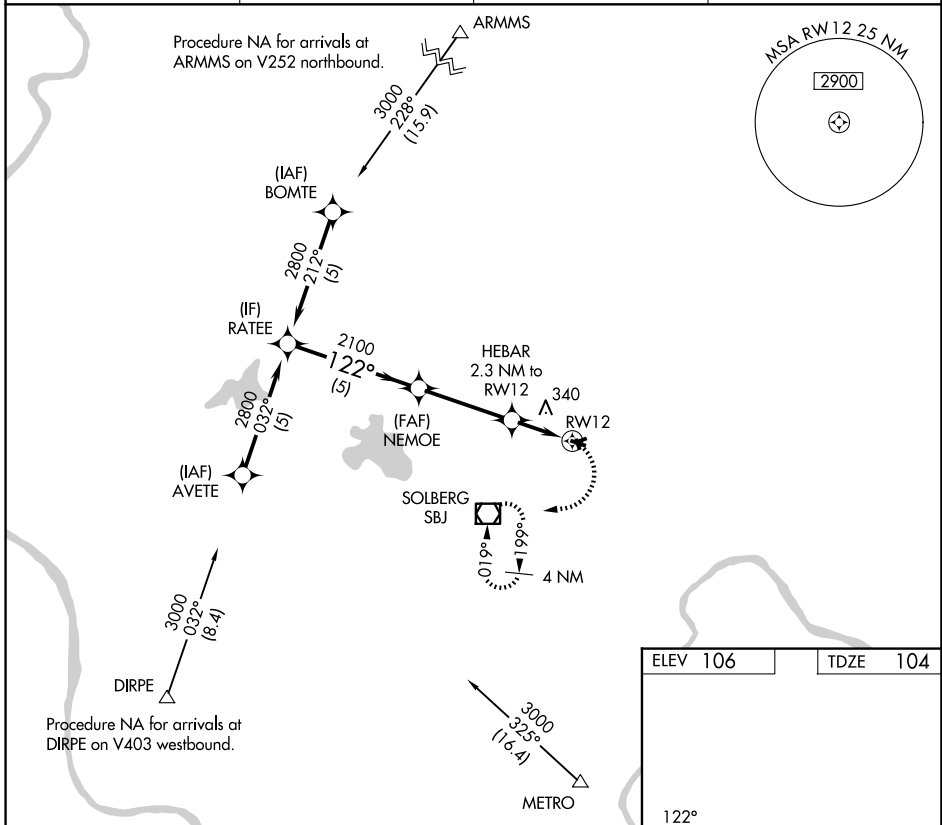
APP CRS	Rwy Ldg	<b>2739</b>
<b>122°</b>	TDZE	<b>104</b>
	Apt Elev	<b>106</b>

RNP APCH - GPS.

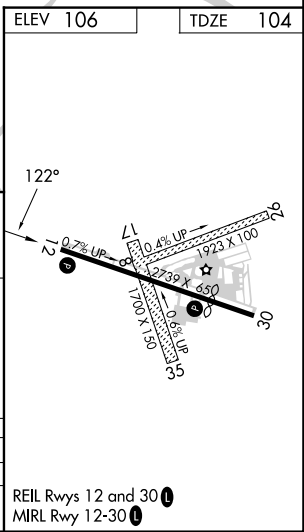
**▼** Rwy 12 helicopter visibility reduction below ¼ SM NA.  
**▲** Circling Rwy 8, 17, 26, 30 and 35 NA at night.

MISSED APPROACH: Climbing right turn to 2500 direct SBJ VOR/DME and hold, continue climb-in-hold to 2500.

ASOS <b>120.6</b>	NEWARK APP CON <b>132.8 379.9</b>	UNICOM <b>123.0</b> (CTAF)	<b>118.325</b> <b>0</b>
----------------------	--------------------------------------	-------------------------------	-------------------------



	RATEE 2800	NEMOE 2100	HEBAR 2.3 NM to RWY 12	RWY 12 900	SBJ 2500
	5 NM		3.5 NM	0.6 NM	1.6 NM
CATEGORY	A	B	C	D	
LNAV MDA	640-1	536 (600-1)		NA	
CIRCLING	640-1 534 (600-1)	960-1¼ 854 (900-1¼)		NA	



NE-2, 11 JUN 2026 to 09 JUL 2026

NE-2, 11 JUN 2026 to 09 JUL 2026