


LOC I-SKC <b>109.5</b>	APP CRS <b>103°</b>	Rwy Ldg <b>5849</b>
		TDZE <b>901</b>
		Apt Elev <b>912</b>

# ILS or LOC RWY 10

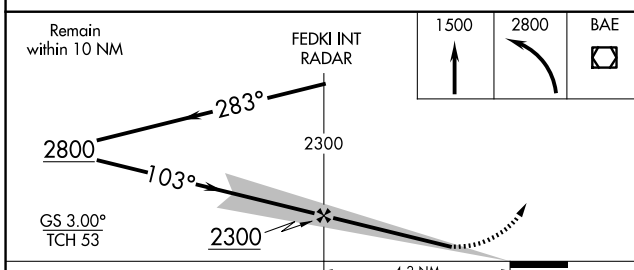
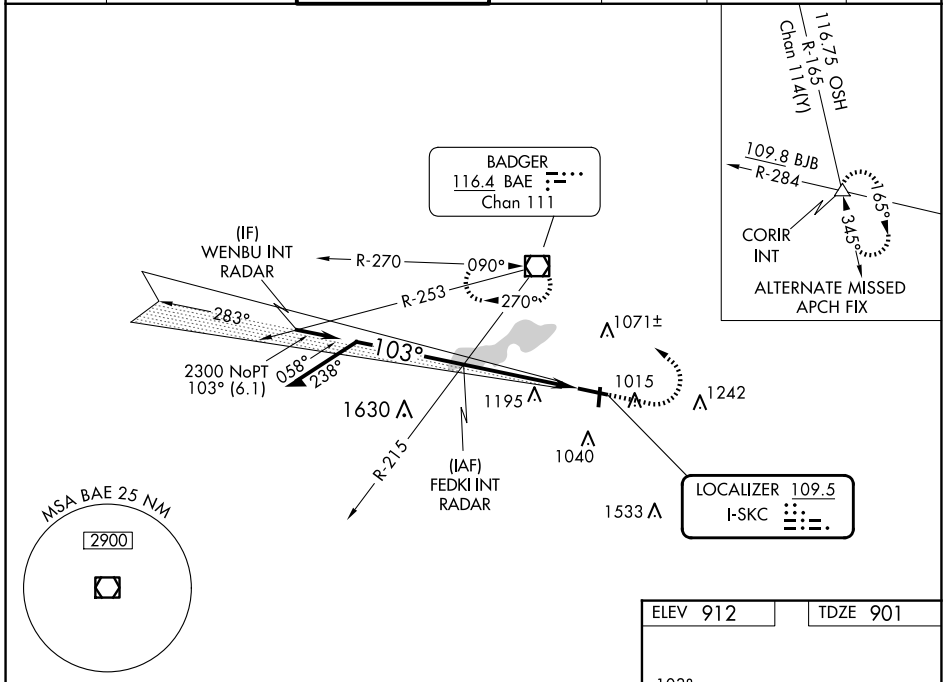
WAUKESHA COUNTY (U/S)



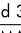
RADAR required for procedure entry.

**⚠** For inop ALS, increase S-LOC 10 visibility to 1½ SM. When local altimeter setting not received, use MWC altimeter setting and increase S-ILS 10 DA to 1149 feet; increase all MDAs 60 feet and S-LOC 10 visibility Cats C and D ½ SM, and Circling visibility Cats C and D ¼ SM.

**MALSR**  
  
**MISSED APPROACH:** Climb to 1500 then climbing left turn to 2800 direct BAE VOR/DME and hold, continue climb-in-hold to 2800.

ATIS <b>118.875</b>	MILWAUKEE APP CON <b>125.35 307.0</b>	WAUKESHA TOWER ★ <b>123.7 (CTAF)</b> 	GND CON <b>121.6</b>	CLNC DEL <b>121.6</b>	CLNC DEL <b>128.7</b> (When twr closed)	UNICOM <b>122.95</b>
------------------------	--	---	-------------------------	--------------------------	---	-------------------------



ELEV 912	TDZE 901												
<b>HIRL</b> Rwy 10-28  <b>MIRL</b> Rwy 18-36  <b>REIL</b> Rwy 28  <b>REIL</b> Rws 18 and 36													
FAF to MAP 4.2 NM <table border="1"> <tr> <td>Knots</td> <td>60</td> <td>90</td> <td>120</td> <td>150</td> <td>180</td> </tr> <tr> <td>Min:Sec</td> <td>4:12</td> <td>2:48</td> <td>2:06</td> <td>1:41</td> <td>1:24</td> </tr> </table>		Knots	60	90	120	150	180	Min:Sec	4:12	2:48	2:06	1:41	1:24
Knots	60	90	120	150	180								
Min:Sec	4:12	2:48	2:06	1:41	1:24								

EC-3, 11 JUN 2026 to 09 JUL 2026

EC-3, 11 JUN 2026 to 09 JUL 2026