

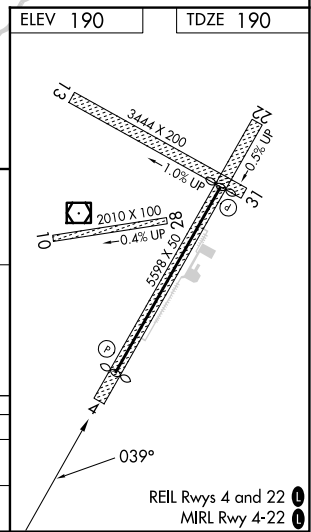
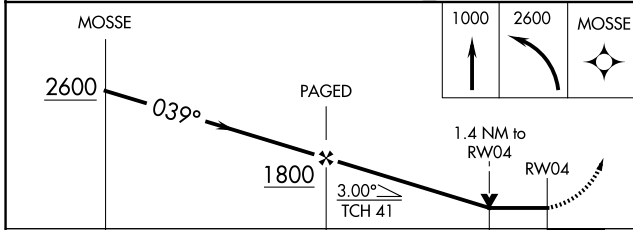
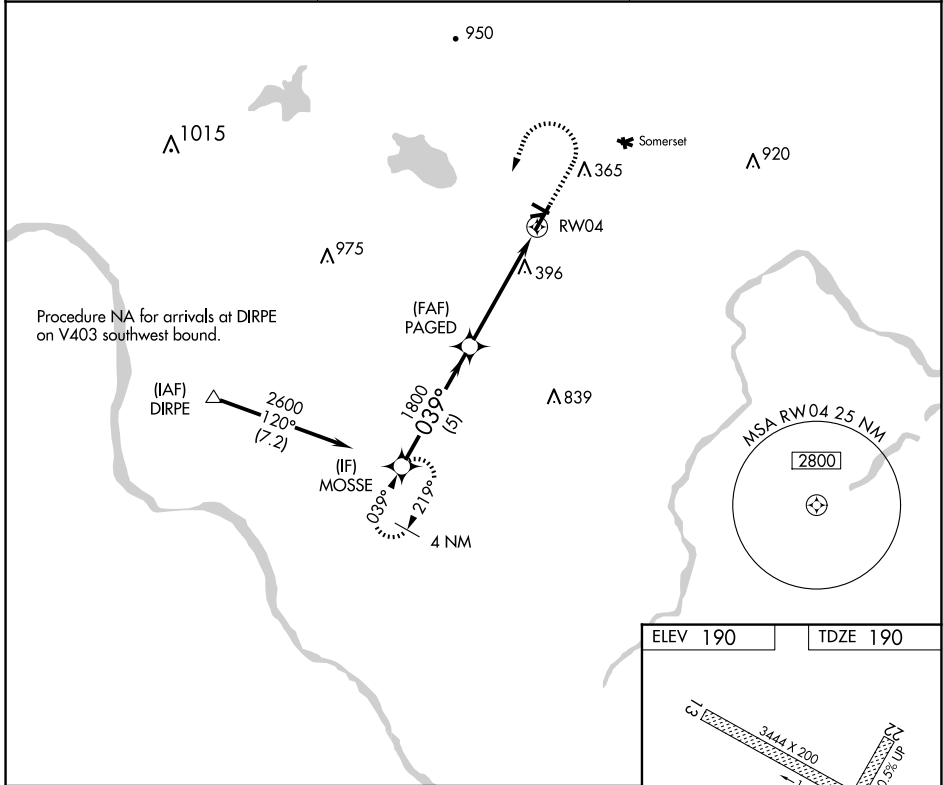
APP CRS 039°	Rwy Ldg TDZE Apt Elev	5054 190 190
------------------------	-----------------------------	---

RNAV (GPS) RWY 4

SOLBERG/HUNTERDON (N51)

RNP APCH - GPS.	Circling NA to Rws 10-28 and 13-31. Rwy 4 helicopter visibility reduction below 3/4 SM NA. Obtain local altimeter setting on CTAF, when not received, use Newark Liberty Intl altimeter setting and increase all MDAs 100 feet. VDP NA when using Newark Liberty Intl altimeter setting.	MISSED APPROACH: Climb to 1000 then climbing left turn to 2600 direct MOSSE and hold.
⚠ NA Procedure NA for arrivals at DIRPE on V403 southwest bound.		

NEWARK APP CON 132.8 379.9	GCO 121.725	UNICOM 122.8 (CTAF) 0
--------------------------------------	-----------------------	---------------------------------



	MOSSE		1000	2600	MOSSE
	2600	039°	PAGED	1800	3.00° TCH 41
	5 NM		3.5 NM		1.4 NM
CATEGORY	A	B	C	D	
LNAV MDA	680-1	490 (500-1)	NA		
CIRCLING	680-1 490 (500-1)	760-1 570 (600-1)	NA		

NE-2, 11 JUN 2026 to 09 JUL 2026

NE-2, 11 JUN 2026 to 09 JUL 2026