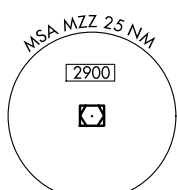
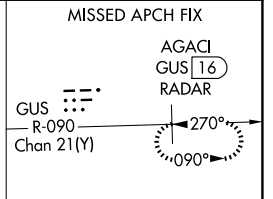
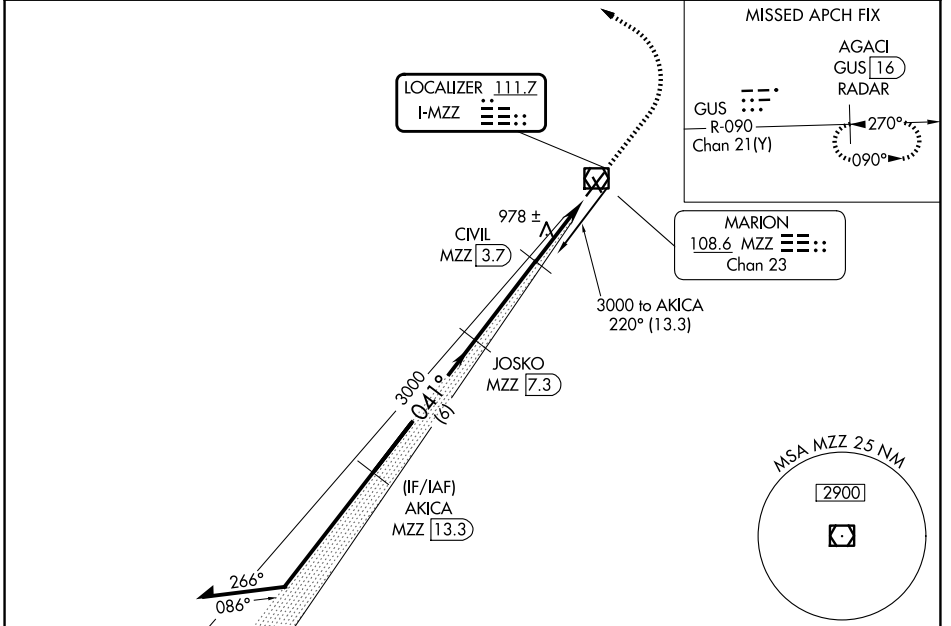


LOC I-MZZ 111.7	APP CRS 041°	Rwy Ldg TDZE Apt Elev	6011 858 859
---------------------------	------------------------	-----------------------------	---

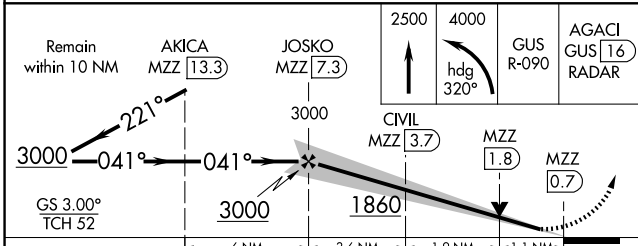
ILS or LOC RWY 4

MARION MUNI - MCKINNEY FLD (MZZ)

DME required.		MALS R	MISSED APPROACH: Climb to 2500 then climbing left turn to 4000 on heading 320° to intercept GUS VORTAC R-090 to AGACI/ GUS VORTAC 16 DME/RADAR and hold.
<p>▼ DME from MZZ VOR/DME. Simultaneous reception of I-MZZ and MZZ DME required. For inop ALS, increase S-LOC 4 Cats C and D visibility to 1½ SM. Circling Rwy 15 NA at night.</p> <p>▲ NA</p>			
AWOS-3 108.6	GRISSOM APP CON ★ 121.05 338.275	CLNC DEL 120.0	UNICOM 122.7 (CTAF) 0



ELEV 859	TDZE 858
HIRL Rwy 4-22 1	
MIRL Rwy 15-33 1	
REIL Rwy 15, 22, and 33 1	



ELEV 859		TDZE 858	
HIRL Rwy 4-22 1			
MIRL Rwy 15-33 1			
REIL Rwy 15, 22, and 33 1			
FAF to MAP 6.6 NM			
Knots	60	90	120
Min:Sec	6:34	4:22	3:17
		150	180
		2:37	2:11

CATEGORY	A	B	C	D
S-ILS 4		1058-½	200 (200-½)	
S-LOC 4	1260-½	402 (500-½)	1260-¾	402 (500-¾)
CIRCLING	1300-1 441 (500-1)	1320-1 461 (500-1)	1420-1½ 561 (600-1½)	1500-2 641 (700-2)

EC-2, 11 JUN 2026 to 09 JUL 2026

EC-2, 11 JUN 2026 to 09 JUL 2026