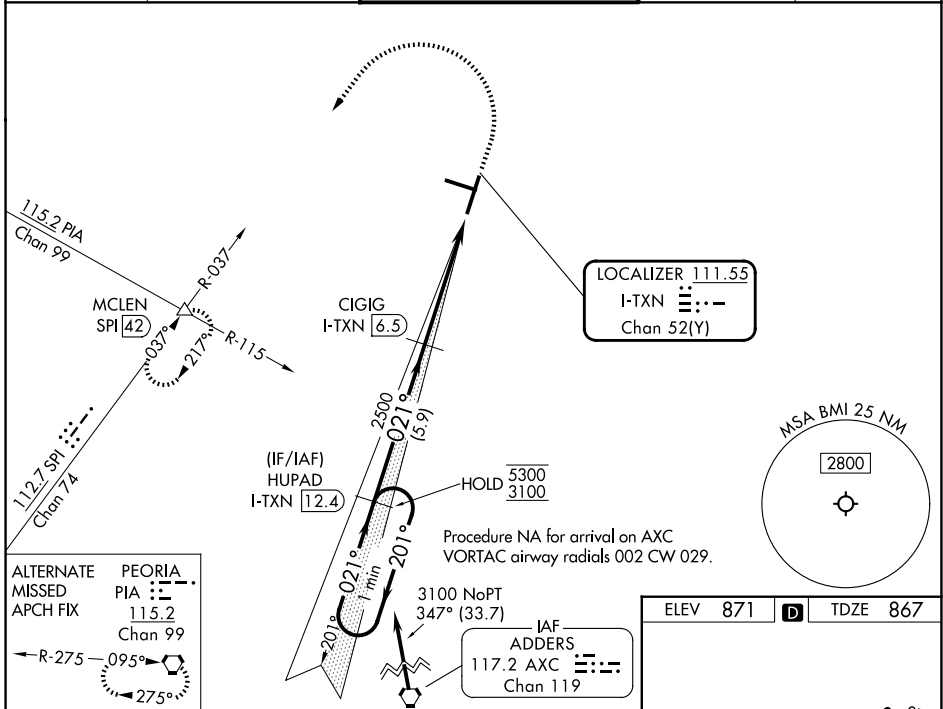


| | | |
|--|------------------------|--|
| LOC/DME I-TXN 111.55 Chan 52 (Y) | APP CRS 021° | Rwy Ldg 8000 TDZE 867 Apt Elev 871 |
|--|------------------------|--|

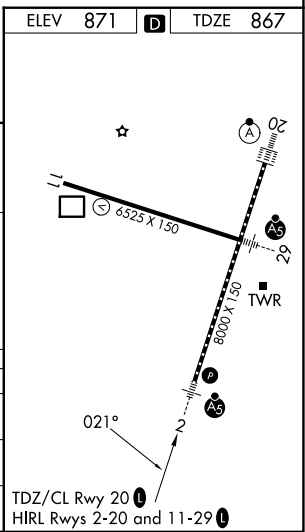
ILS or LOC RWY 2

CENTRAL IL RGNL/BLOOMINGTON-NORMAL (BMI)

| | | | | |
|----------------------------|---|--------------|---|--------------------------|
| DME required for LOC only. | | MALS R AS | MISSED APPROACH: Climb to 1400 then climbing left turn to 3000 on heading 270° and SPI VORTAC R-037 to MLEN INT/SPI 42 DME and hold. | |
| ATIS 119,575 | SAINT LOUIS APP CON 128,725 256.9 | | BLOOMINGTON TOWER ★ 124.6 (CTAF) 0 269,575 | GND CON 121,65 |



| | | | | | | |
|---|---|-------------|-------------------------|-------------------------|--------------|-----------|
| One Minute Holding Pattern HUPAD I-TXN 12.4 5300 ← 201° 3100 → 021° GS 3.00° TCH 55 | VGSI and ILS glidepath not coincident (VGSI Angle 3.00/TCH 75). | | 1400 ↑ | 3000 hdg 270° | SPI R-037 | MLEN △ |
| | 5.9 NM | 4 NM | 1 NM | CIGIG I-TXN 6.5 | I-TXN 2.5 | I-TXN 1.5 |
| CATEGORY | A | B | C | D | | |
| S-ILS 2 | | 1067/40 | 200 (200-¾) | | | |
| S-LOC 2 | | 1260/40 | 393 (400-¾) | | | |
| CIRCLING | 1340-1 | 469 (500-1) | 1620-2¼ 749 (800-2¼) | 1620-2½ 749 (800-2½) | | |



EC-3, 11 JUN 2026 to 09 JUL 2026

EC-3, 11 JUN 2026 to 09 JUL 2026