

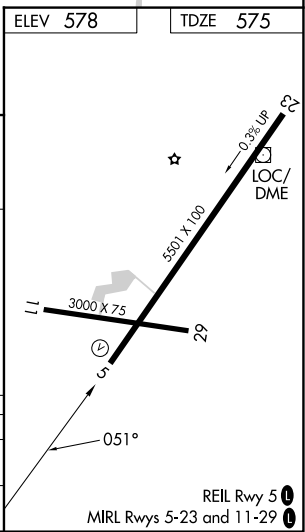
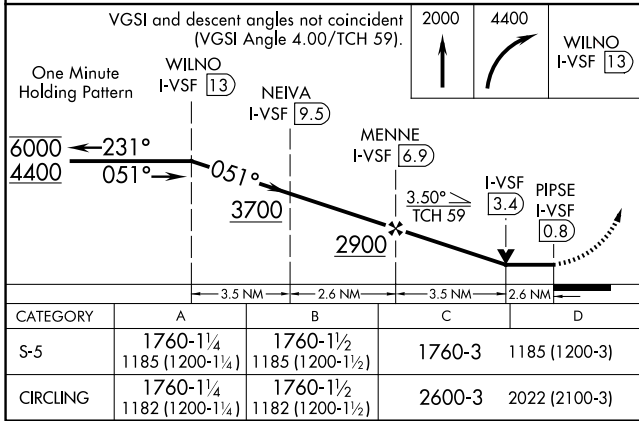
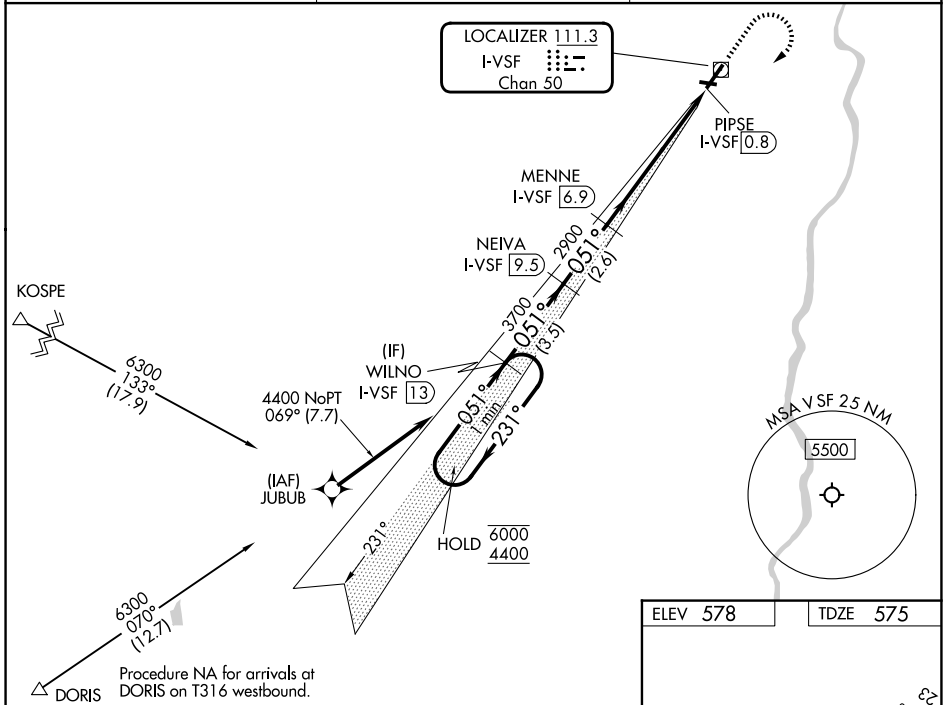
LOC/DME I-VSF 111.3 Chan 50	APP CRS 051°	Rwy Ldg TDZE Apt Elev	5501 575 578
---	------------------------	-----------------------------	---

LOC RWY 5

HARTNESS STATE (SPRINGFIELD) (V5F)

RNP APCH - GPS. DME required.	MISSED APPROACH: Climb to 2000 then climbing right turn to 4400 direct WILNO/13 DME and hold.
<p>▼ Rwy 5 helicopter visibility reduction below ¾ SM NA. When local altimeter setting not received, use LEB altimeter setting and increase all MDAs 60 feet.</p> <p>⚠ NA VDP NA when using LEB altimeter setting. Circling Rwy 11, 23, 29 NA at night.</p>	

ASOS 121.425	BOSTON CENTER 134.7 269.475	UNICOM 122.8 (CTAF)
------------------------	---------------------------------------	-------------------------------



NE-1, 11 JUN 2026 to 09 JUL 2026

NE-1, 11 JUN 2026 to 09 JUL 2026