

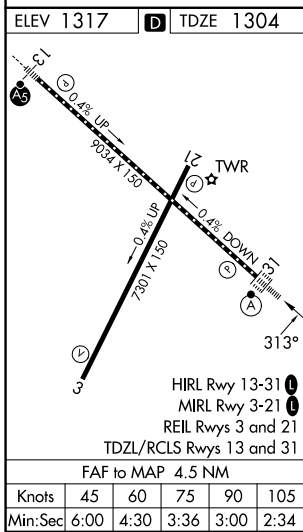
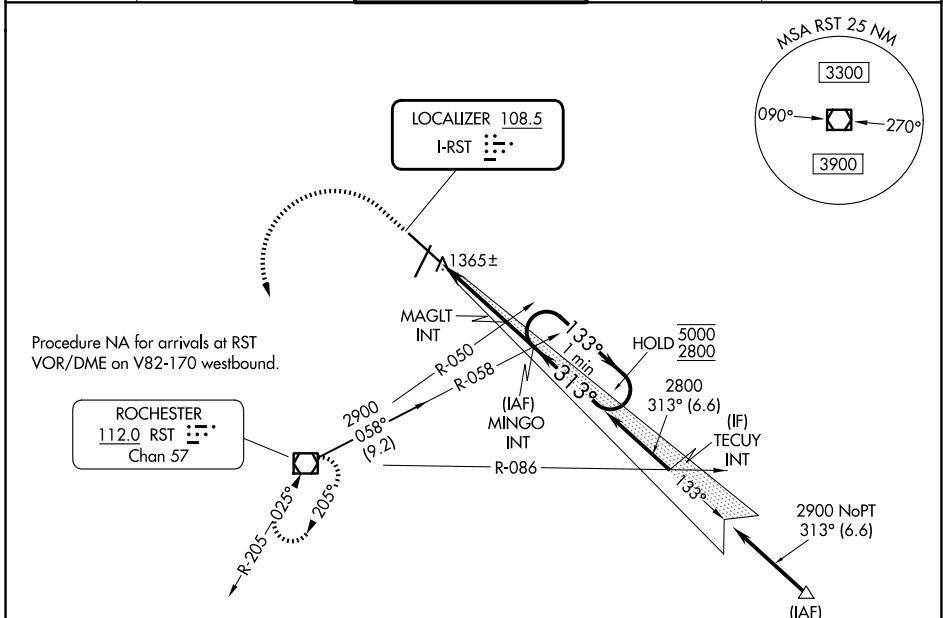
COPTER ILS Y or LOC Y RWY 31

ROCHESTER INTL (RST)

LOC I-RST 108.5	APP CRS 313°	Rwy Ldg 9033	TDZE 1304
		Apt Elev 1317	

RADAR required for procedure entry at EMORE.		ALSF-2 	MISSED APPROACH: Climb to 2000 then climbing left turn to 3000 direct RST VOR/DME and hold.
For inop ALS increase visibility to RVR 5000.			

ATIS 120.5	ROCHESTER APP CON* 119.8 251.125	ROCHESTER TOWER* 118.3 (CTAF) 257.8	GND CON 121.9	UNICOM 122.95
----------------------	--	---	-------------------------	-------------------------



2000	3000	RST	MINGO INT	2800	One Minute Holding Pattern
↑	↶		MAGLT INT	133° → 5000	2800
				← 313°	← 313°
				2380	2800
				3.2 NM	1.3 NM
					GS 3.00°
					TCH 55
CATEGORY	COPTER				
H-ILS 31	1504/12 200 (200-¼)				
H-LOC 31	1620/12 316 (400-¼)				

COPTER ILS Y or LOC Y RWY 31

NC-1, 11 JUN 2026 to 09 JUL 2026

NC-1, 11 JUN 2026 to 09 JUL 2026