

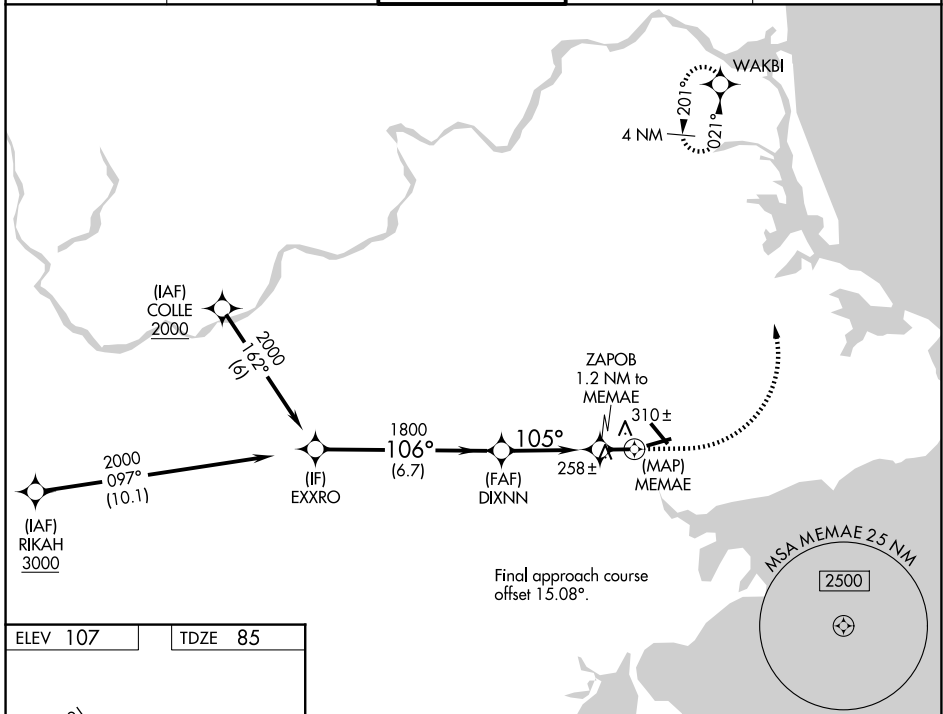
WAAS CH <b>65640</b> <b>W09A</b>	APP CRS <b>105°</b>	Rwy Ldg TDZE Apt Elev	<b>4755</b> <b>85</b> <b>107</b>
--	------------------------	-----------------------------	--

# RNAV (GPS) RWY 9

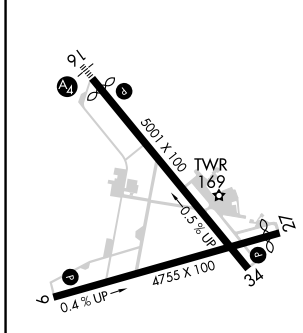
BEVERLY RGNL (BVY)

RNP APCH - GPS.		MISSED APPROACH: Climb to 600 then climbing left turn to 2000 direct WAKBI and hold.		
<p>Procedure NA at night.</p> <p>Rwy 9 helicopter visibility reduction below 1 SM NA.</p>				

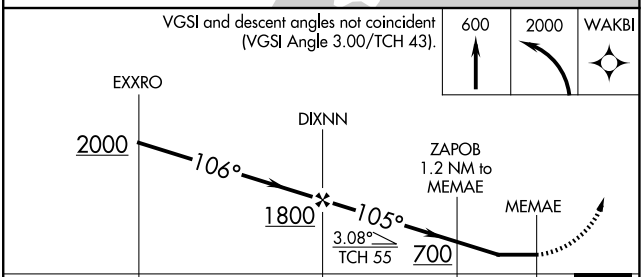
ATIS <b>119.2</b>	BOSTON APP CON <b>124.4 279.6</b>	BEVERLY TOWER★ <b>125.2 (CTAF)</b>	GND CON <b>121.6</b>	UNICOM <b>122.95</b>
----------------------	--------------------------------------	---------------------------------------	-------------------------	-------------------------



ELEV 107	TDZE 85
----------	---------



REIL Rwy 34  
MIRL Rwy 9-27 and 16-34



CATEGORY	A	B	C	D
LP MDA	520-1	435 (500-1)	520-1¼	435 (500-1¼)
LNAV MDA	560-1	475 (500-1)	560-1⅜	475 (500-1⅜)
CIRCLING	600-1	493 (500-1)	820-2 713 (800-2)	820-2¼ 713 (800-2¼)

NE-1, 11 JUN 2026 to 09 JUL 2026

NE-1, 11 JUN 2026 to 09 JUL 2026