


|   |                        |  |
|---|------------------------|--|
| LOC/DME I-ISO<br><b>111.3</b><br>Chan <b>50</b> | APP CRS<br><b>050°</b> | Rwy Ldg <b>10960</b><br>TDZE <b>93</b><br>Apt Elev <b>93</b> |
|---|------------------------|--|

# ILS or LOC RWY 5

KINSTON RGNL JETPORT AT STALLINGS FLD (ISO)

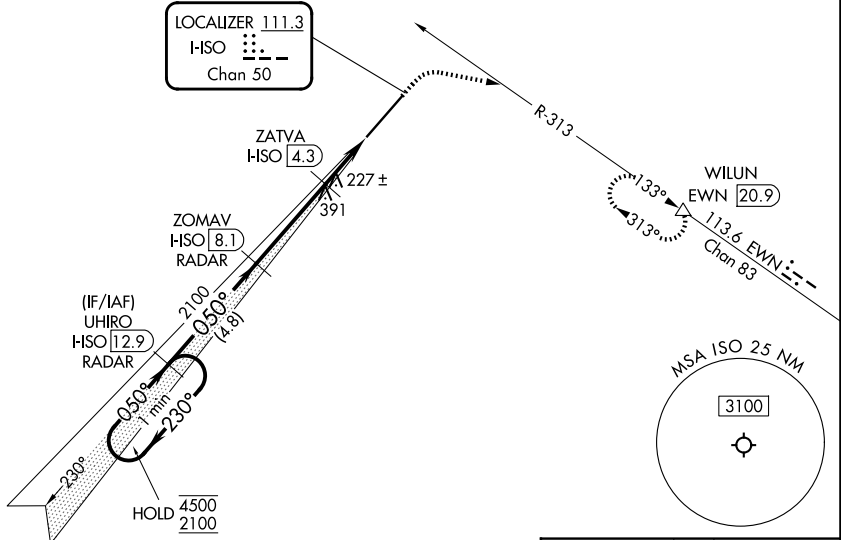
RADAR required for procedure entry. DME required.

**⚠** VDP NA when using GSB altimeter setting. When local altimeter setting not received, use GSB altimeter setting and increase S-ILS 5 DA to 336 feet; increase all MDAs 60 feet and S-LOC 5 visibility Cat C/D/E to RVR 4500 and Circling visibility Cat E 1/4 SM. For inop ALS, increase S-ILS 5 Cat E visibility to RVR 4000 and S-LOC 05 Cat E visibility RVR 6000. For inop ALS when using GSB altimeter setting, increase S-ILS 5 Cat E visibility to RVR 4000 and increase S-LOC 5 Cat E visibility to 1/8 SM.

MALSR 

MISSED APPROACH: Climb to 600 then climbing right turn to 2500 on heading 110° and on EWN VOR/DME R-313 to WILUN/EWN 20.9 DME and hold.

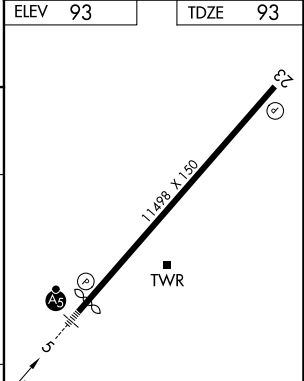
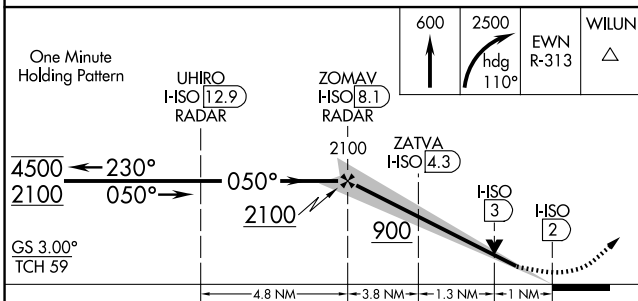
|                         |   |   |                         |                         |
|-------------------------|---|---|-------------------------|-------------------------|
| AWOS-3<br><b>132.75</b> | SEYMOUR JOHNSON APP CON *<br><b>127.3 273.6</b> | KINSTON TOWER *<br><b>120.6 (CTAF) 0 335.55</b> | GND CON<br><b>121.9</b> | UNICOM<br><b>122.95</b> |
|-------------------------|---|---|-------------------------|-------------------------|



SE-2, 11 JUN 2026 to 09 JUL 2026

SE-2, 11 JUN 2026 to 09 JUL 2026

|         |         |
|---------|---------|
| ELEV 93 | TDZE 93 |
|---------|---------|



| CATEGORY | A                    | B                    | C                            | D                    | E                            |
|----------|----------------------|----------------------|------------------------------|----------------------|------------------------------|
| S-ILS 5  | 293/24 200 (200-1/2) |                      |                              |                      |                              |
| S-LOC 5  | 480/24               | 387 (400-1/2)        | 480/35                       | 387 (400-3/8)        |                              |
| CIRCLING | 540-1<br>447 (500-1) | 560-1<br>467 (500-1) | 700-1 3/4<br>607 (700-1 3/4) | 700-2<br>607 (700-2) | 780-2 1/2<br>687 (700-2 1/2) |

REIL Rwy 23 **0**  
HIRL Rwy 5-23 **0**