

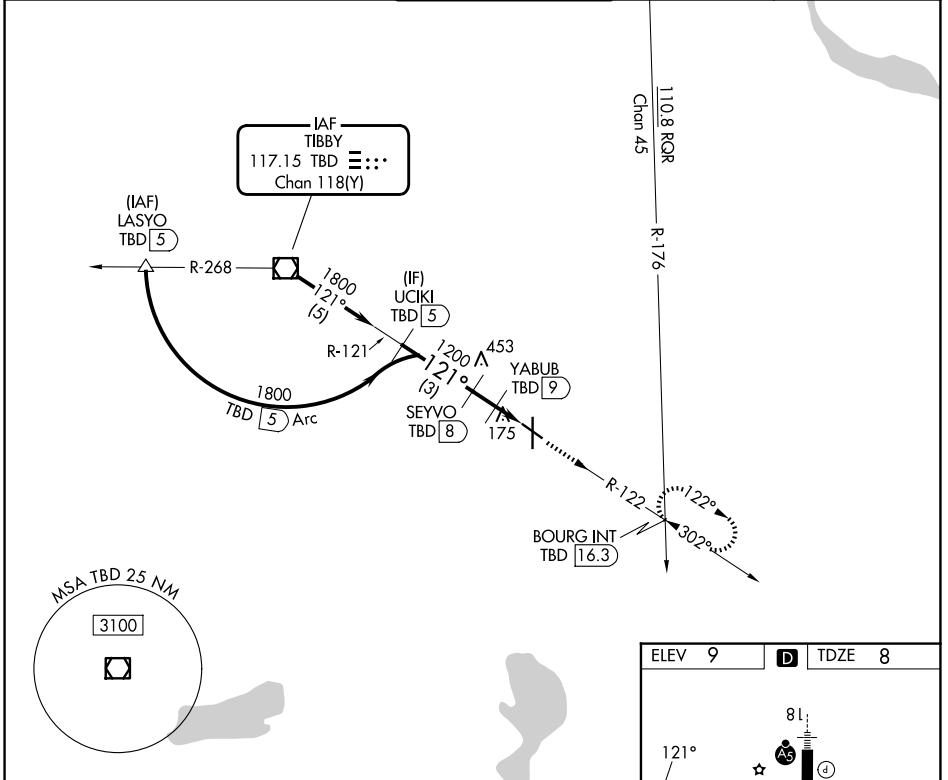
| | | |
|--|------------------------|---|
| VOR/DME TBD 117.15 Chan 118(Y) | APP CRS 121° | Rwy Ldg 4843 TDZE 8 Apt Elev 9 |
|--|------------------------|---|

COPTER VOR RWY 12

HOUMA-TERREBONNE (HUM)

| | |
|--|---|
| DME required. ▼ When local altimeter setting not received, use MSY ▲ altimeter setting and increase MDA 80 feet. | MISSED APPROACH: Climb to 1800 on TBD VOR/DME R-122 to BOURG INT/16.3 DME and hold, continue climb-in-hold to 1800. |
|--|---|

| | | | | |
|-----------------------|--|--|---------------------------|-------------------------|
| ATIS 120.25 | NEW ORLEANS APP CON 118.9 350.35 | HOUMA TOWER ★ 125.3 (CTAF) 0 346.3 | GND CON 123.875 | UNICOM 122.95 |
|-----------------------|--|--|---------------------------|-------------------------|



SC-4, 11 JUN 2026 to 09 JUL 2026

SC-4, 11 JUN 2026 to 09 JUL 2026

